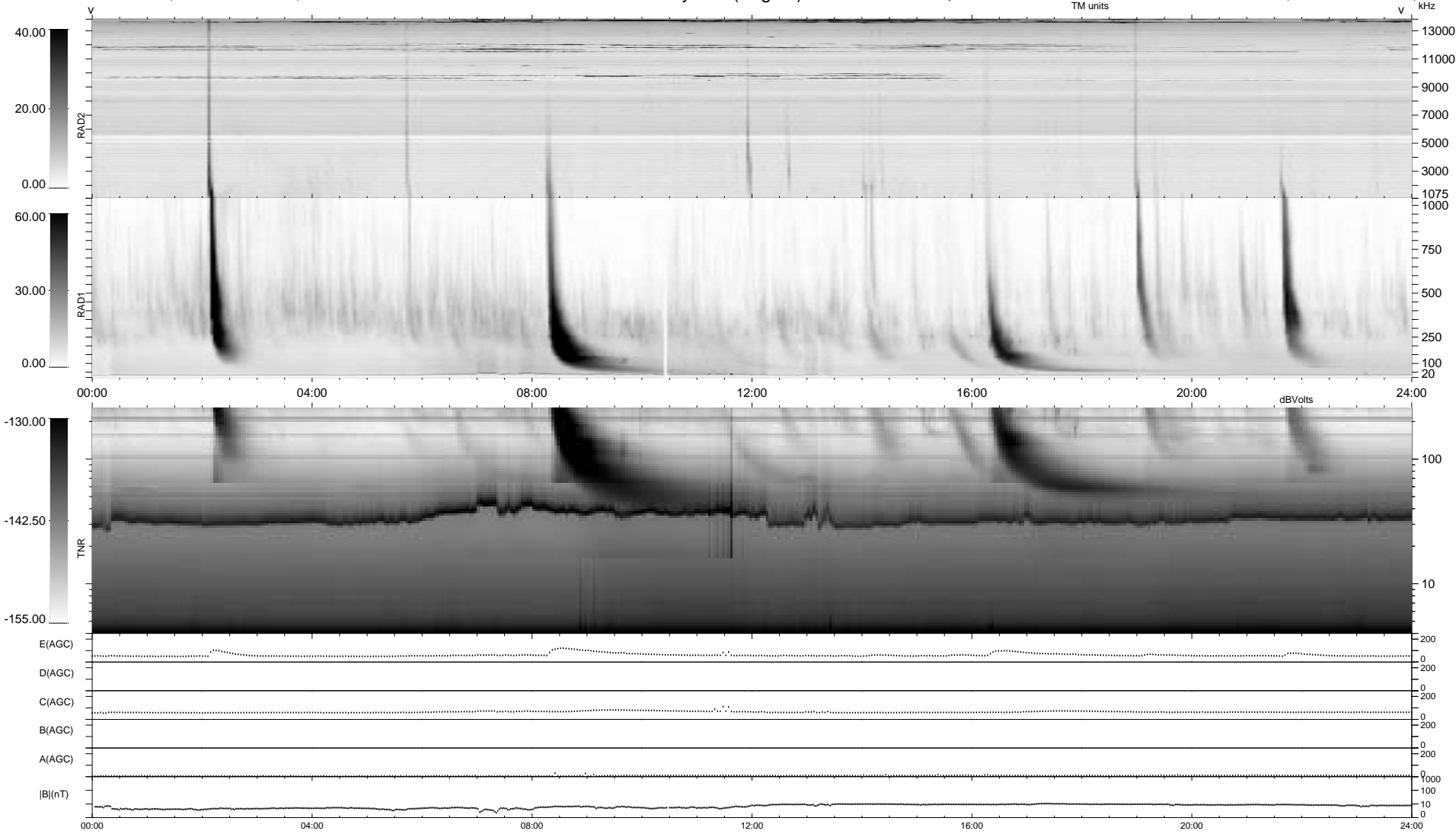


0 bad + 2 good MF/ZMF projected (100%) - 0 missing MFs
 Avg interval = 180 secs
 Re = 151.37 (149.22, 24.48, -6.94 GSE)

1.7d VMS-SunOS LZ version = v01
 DAILY Wed Sep 3, 2008
 Re = 155.66 (152.73, 29.39, -6.39 GSE)

WIND/WAVES Summary Plot (Page 1) for 18-MAY-2004, DOY = 139



```

RAD2
Antenna Ey .....
Mode LIN(1) .....
SUM/SEP SUM .....
Toggle OFF .....

RAD1
Antenna Ex .....
Mode LIS(2,3) .....
SUM/SEP SUM .....
Toggle OFF .....

TNR
Antenna ExEy .....
Mode A-32 .....
Sweep ACE .....
  
```