

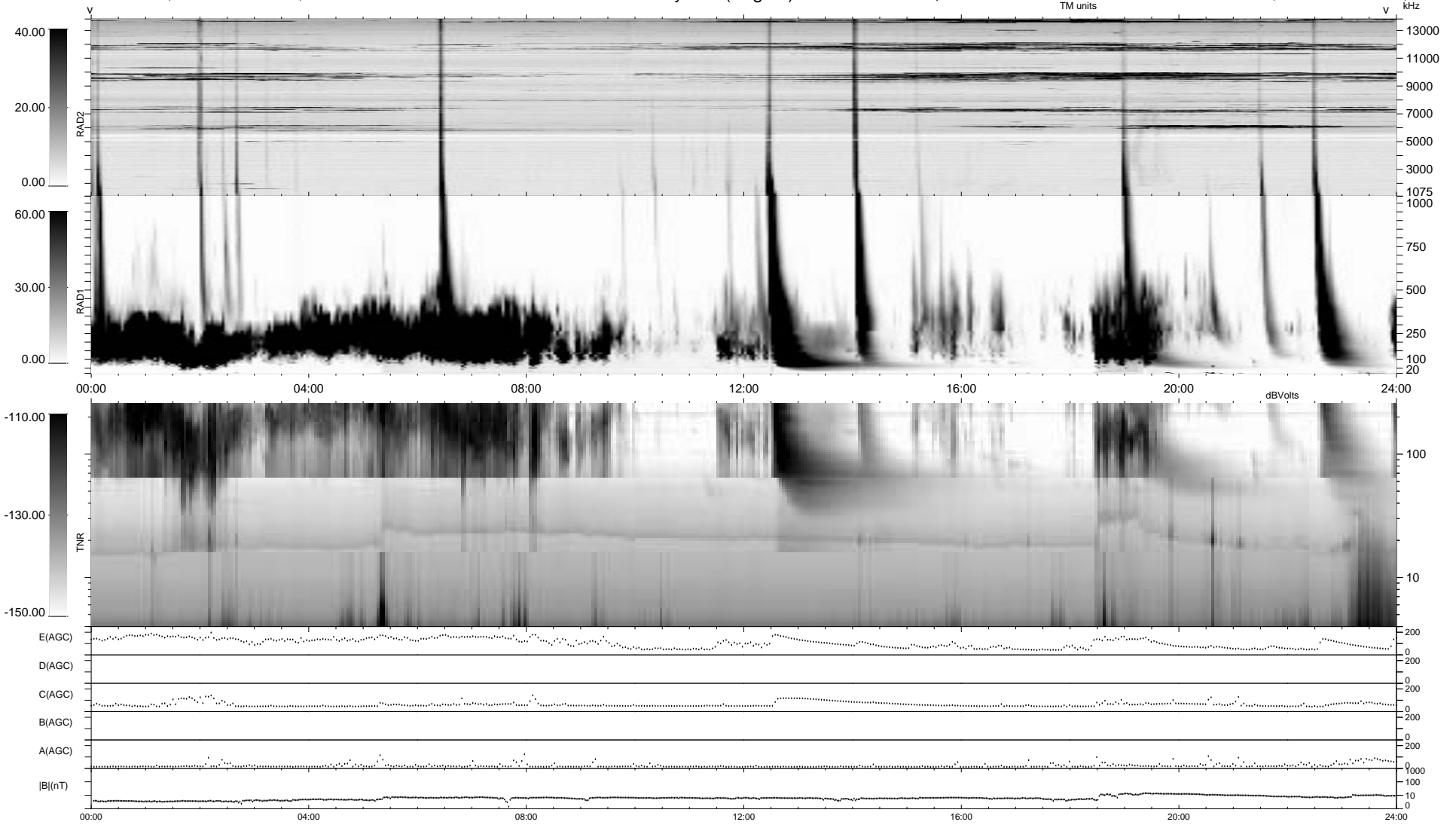
0 bad + 2 good MF/ZMF projected (100%) - 0 missing MFs
Avg interval = 180 secs
Re = -128.98 (-71.58, 106.79, 10.39 GSE)

1.7d VMS-SunOS

LZ version = v01

WIND/WAVES Summary Plot (Page 1) for 12-APR-2004, DOY = 103

DAILY Wed Sep 3, 2008
Re = 124.98 (-73.48, 100.54, 10.60 GSE)



RAD2
Antenna Ey
Mode LIN(1)
SUM/SEP SUM
Toggle OFF
RAD1
Antenna Ex
Mode LIS(2,3)
SUM/SEP SUM
Toggle OFF
TNR
Antenna ExEy
Mode A-32
Sweep ACE