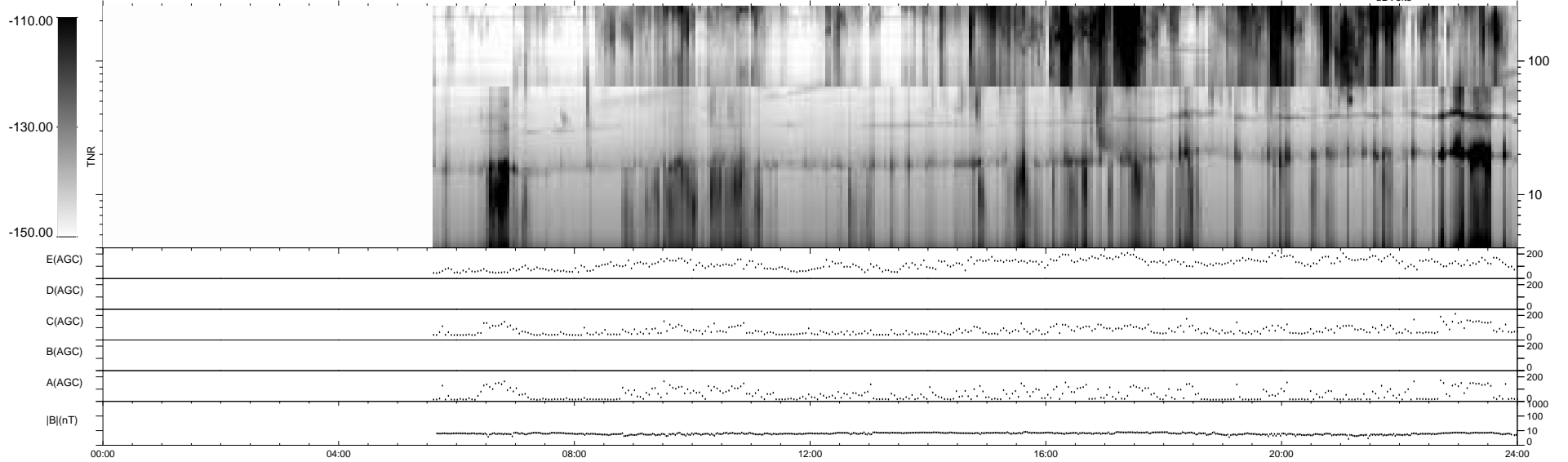
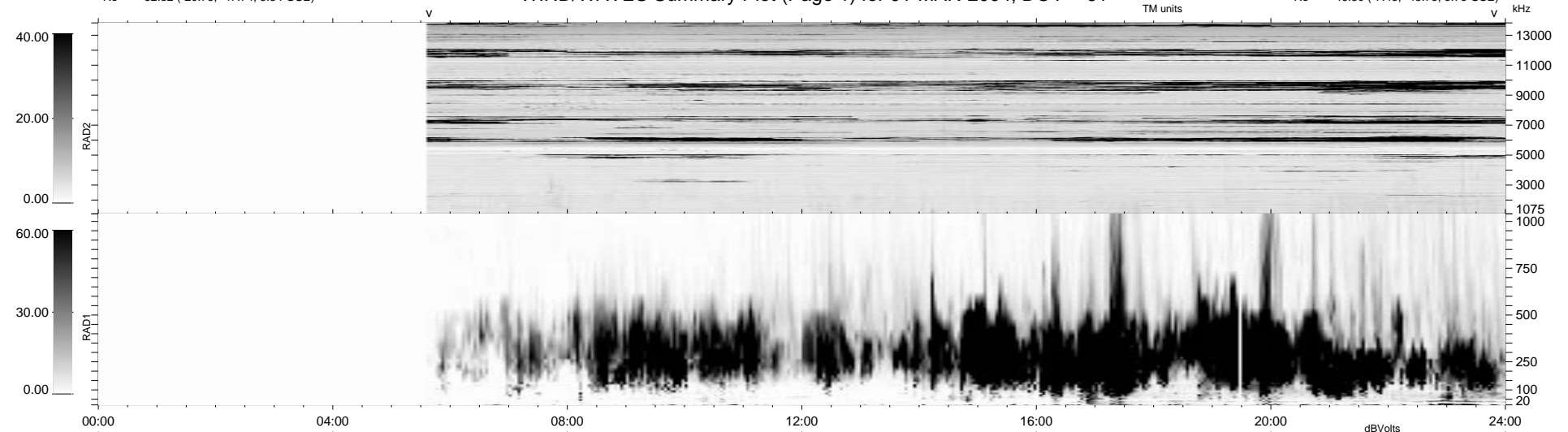


0 bad + 2 good MF/ZMF projected (100%) - 0 missing MFs
Avg interval = 180 secs
Re = 52.32 (-20.73, -47.74, 5.34 GSE)

1.7d VMS-SunOS LZ version = v02

WIND/WAVES Summary Plot (Page 1) for 01-MAR-2004, DOY = 61

DAILY Wed Sep 3, 2008
Re = 46.50 (-7.45, -45.75, 3.78 GSE)



RAD2
Antenna
Mode
SUM/SEP
Toggle
RAD1
Antenna
Mode
SUM/SEP
Toggle
TNR
Antenna
Mode
Sweep