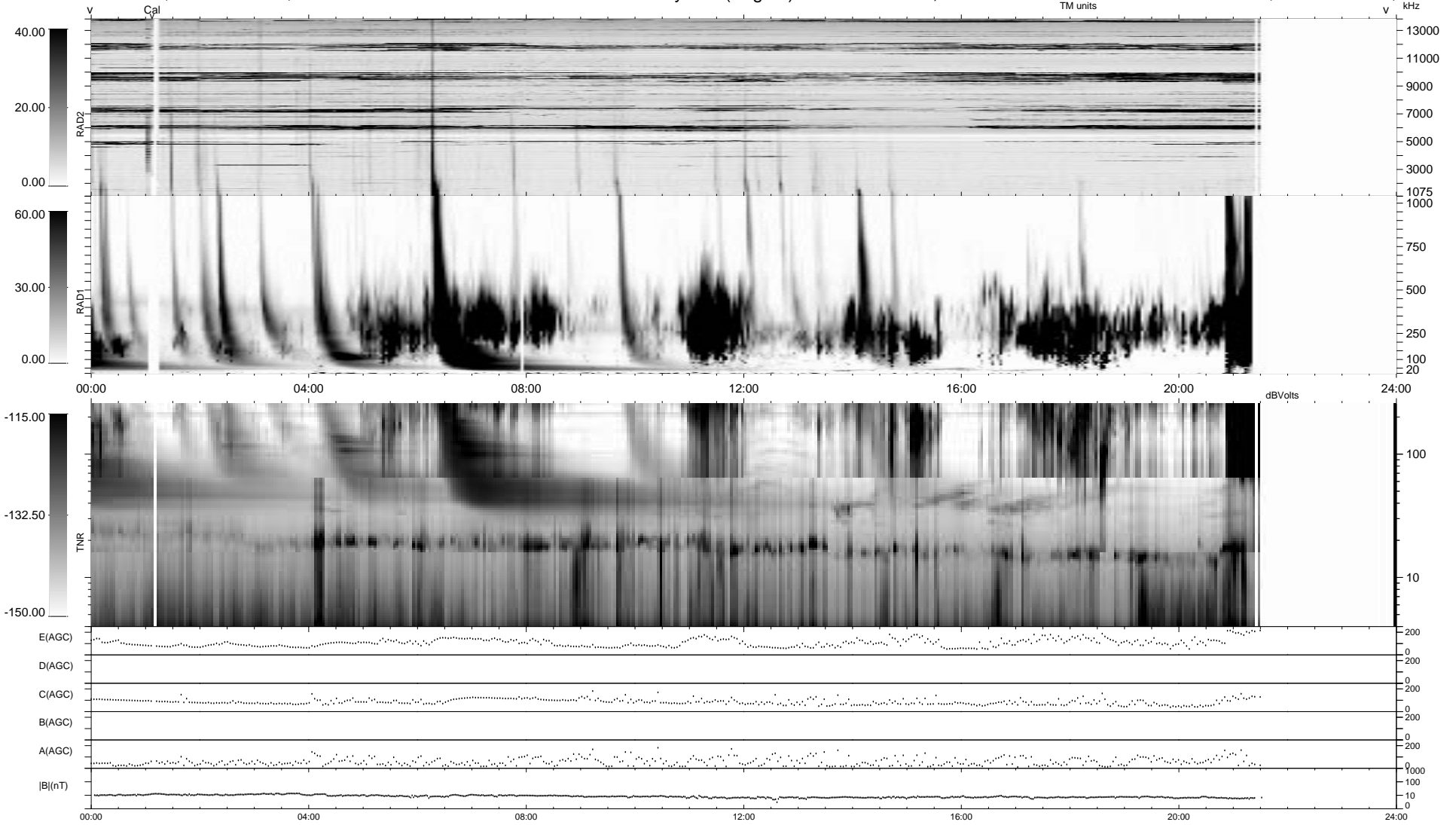


0 bad + 2 good MF/ZMF projected (100%) - 0 missing MFs  
 Avg interval = 180 secs  
 Re = 62.59 (-40.32, -47.30, 7.37 GSE)

1.7d VMS-SunOS LZ version = v01  
 DAILY Wed Sep 3, 2008  
 Re = 54.30 (-24.80, -47.96, 5.79 GSE)

### WIND/WAVES Summary Plot (Page 1) for 29-FEB-2004, DOY = 60



```

RAD2
Antenna Ey .....
Mode LIN(1) .....
SUM/SEP SUM .....
Toggle OFF .....

RAD1
Antenna Ex .....
Mode LIS(2,3) .....
SUM/SEP SUM .....
Toggle OFF .....

TNR
Antenna ExEy .....
Mode A-32 .....
Sweep ACE .....
  
```