

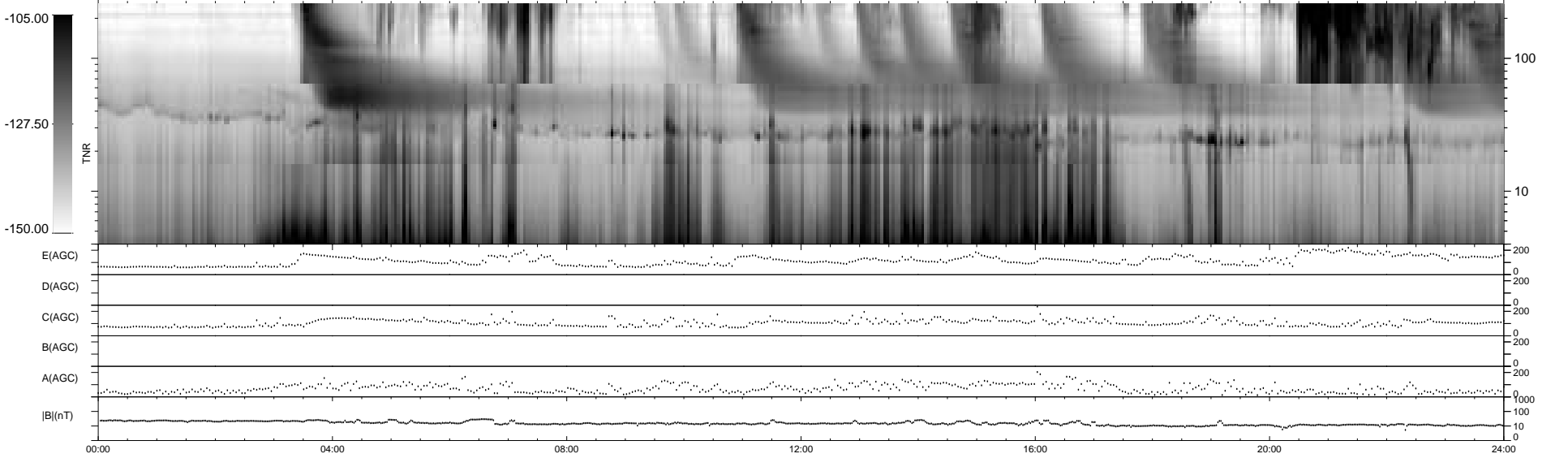
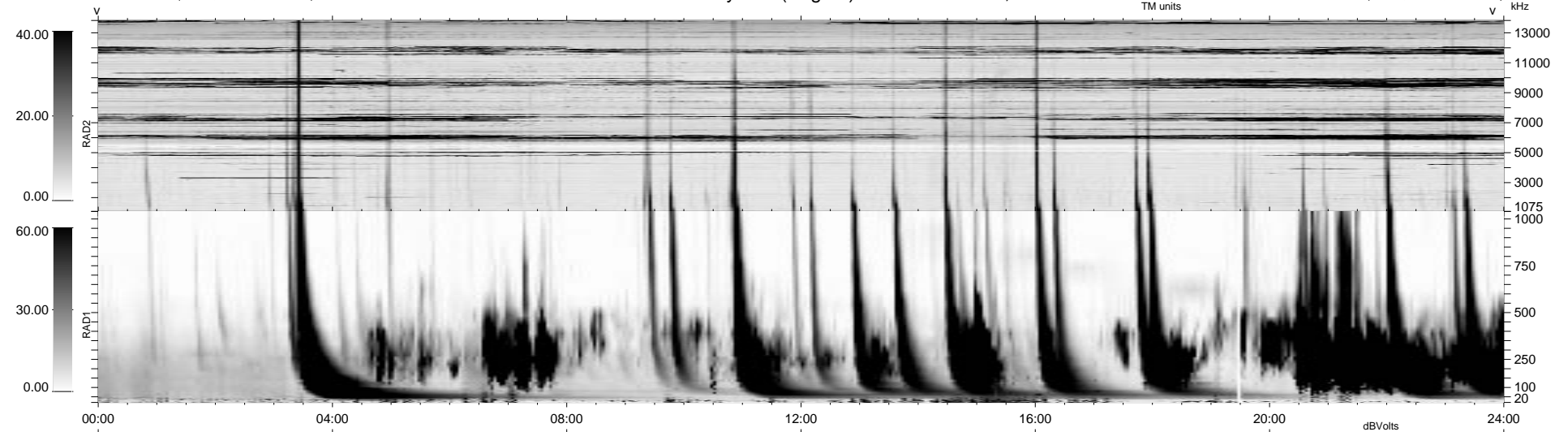
0 bad + 2 good MF/ZMF projected (100%) - 0 missing MFs  
 Avg interval = 180 secs  
 Re = 70.91 (-54.18, -44.93, 8.62 GSE)

1.7d VMS-SunOS

LZ version = v03

### WIND/WAVES Summary Plot (Page 1) for 28-FEB-2004, DOY = 59

DAILY Wed Sep 3, 2008  
 Re = 62.65 (-40.43, -47.28, 7.38 GSE)



```

RAD2
Antenna Ey .....
Mode LIN(1) .....
SUM/SEP SUM .....
Toggle OFF .....

RAD1
Antenna Ex .....
Mode LIS(2,3) .....
SUM/SEP SUM .....
Toggle OFF .....

TNR
Antenna ExEy .....
Mode A-32 .....
Sweep ACE .....
  
```