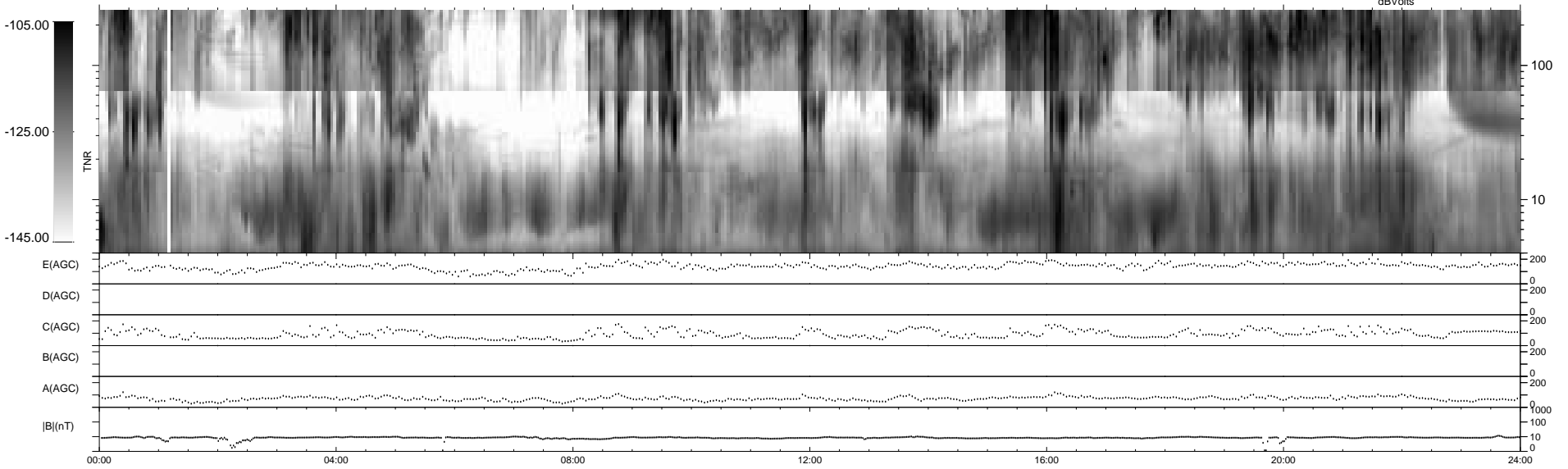
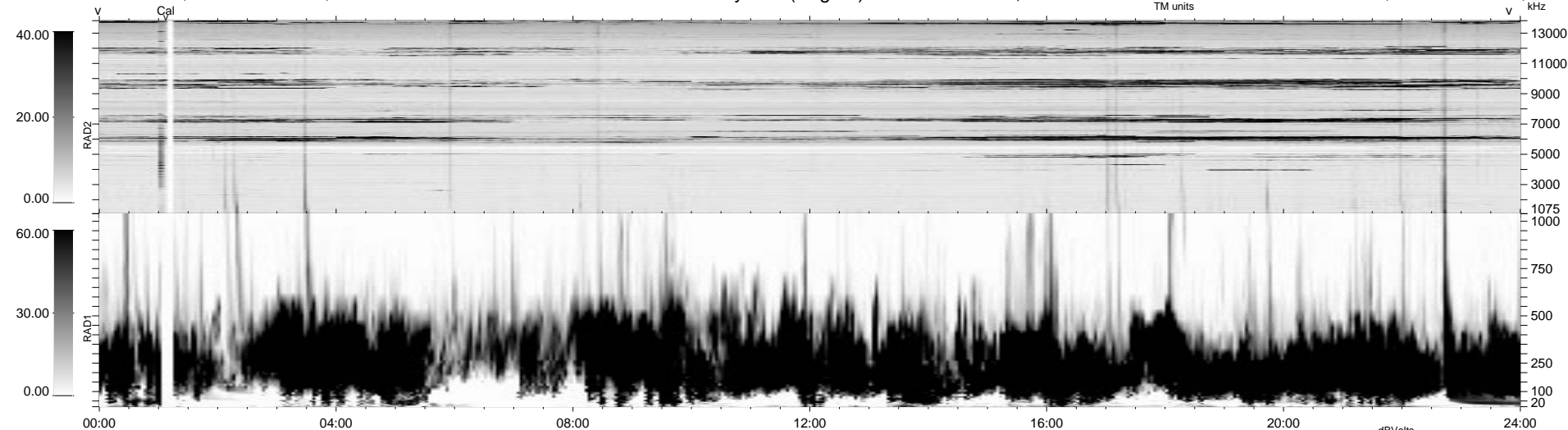


0 bad + 2 good MF/ZMF projected (100%) - 0 missing MFs  
 Avg interval = 180 secs  
 Re = -158.72 (-157.95, 11.88, 10.11 GSE)

1.7d VMS-SunOS LZ version = v01  
 DAILY Wed Sep 3, 2008  
 Re = 154.56 (-153.95, 8.83, 10.46 GSE)

### WIND/WAVES Summary Plot (Page 1) for 13-FEB-2004, DOY = 44



```

RAD2
Antenna Ey .....
Mode LIN(1) .....
SUM/SEP SUM .....
Toggle OFF .....

RAD1
Antenna Ex .....
Mode LIS(2,3) .....
SUM/SEP SUM .....
Toggle OFF .....

TNR
Antenna ExEy .....
Mode A-32 .....
Sweep ACE .....
  
```