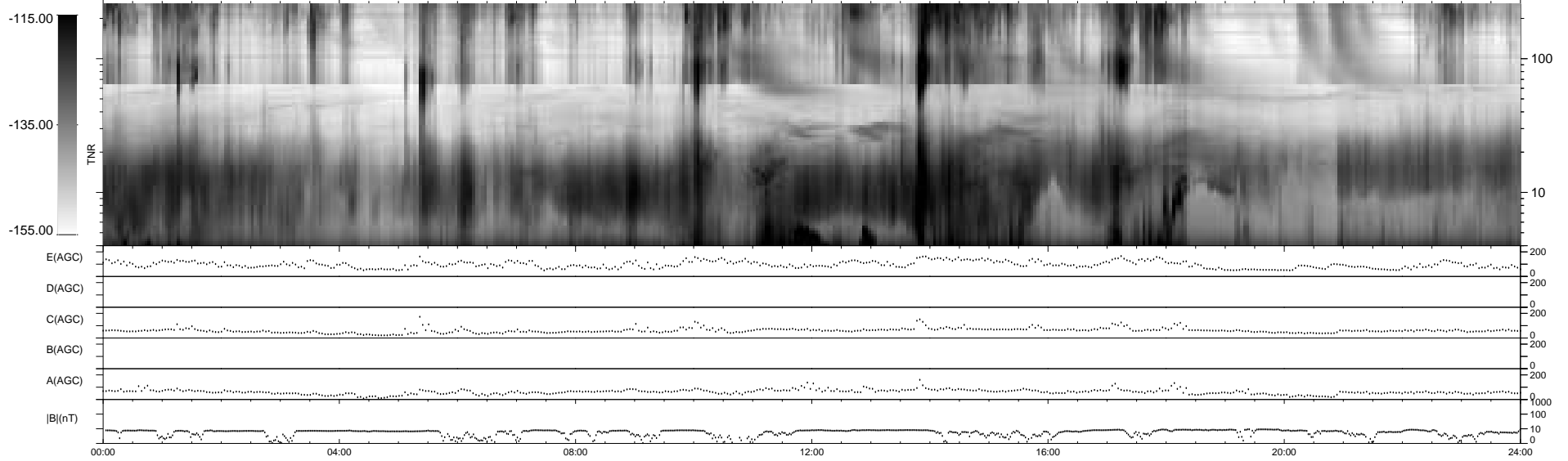
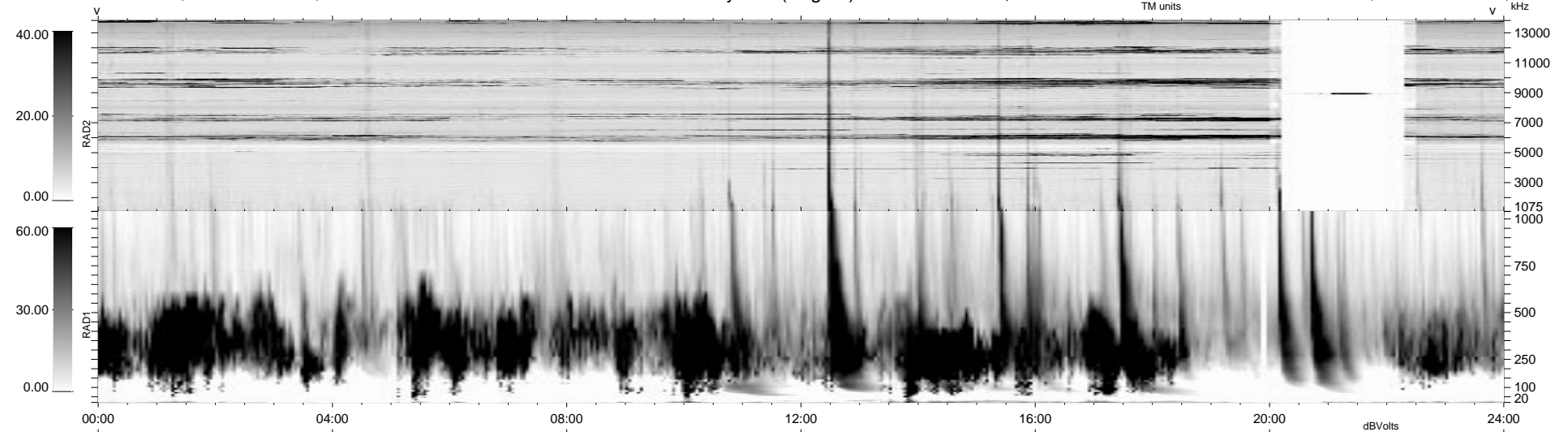


0 bad + 2 good MF/ZMF projected (100%) - 0 missing MFs
 Avg interval = 180 secs
 Re = 170.26 (-168.82, 20.26, 8.84 GSE)

1.7d VMS-SunOS LZ version = v01
 DAILY Wed Sep 3, 2008
 Re = 166.61 (-165.42, 17.62, 9.29 GSE)

WIND/WAVES Summary Plot (Page 1) for 10-FEB-2004, DOY = 41



RAD2
 Antenna Ey
 Mode LIN(1)
 SUM/SEP SUM
 Toggle OFF
 RAD1
 Antenna Ex
 Mode LIS(2,3)
 SUM/SEP SUM
 Toggle OFF
 TNR
 Antenna ExEy
 Mode A-32
 Sweep ACE