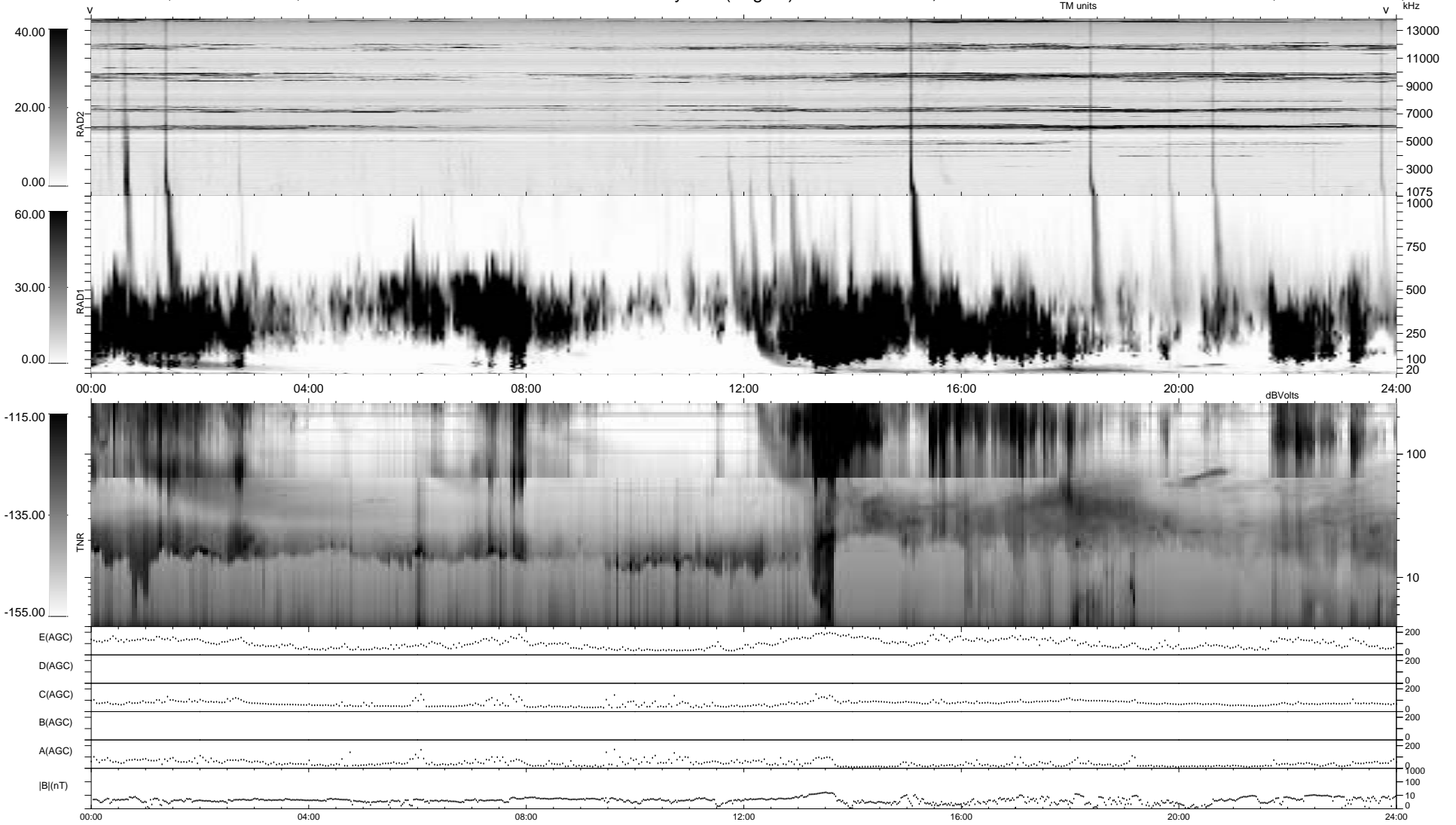


0 bad + 2 good MF/ZMF projected (100%) - 0 missing MFs
 Avg interval = 180 secs
 Re = -226.68 (-223.60, 36.46, -7.61 GSE)

1.7d VMS-SunOS LZ version = v01
 DAILY Wed Sep 3, 2008
 Re = 225.51 (-222.30, 37.27, -7.07 GSE)

WIND/WAVES Summary Plot (Page 1) for 13-JAN-2004, DOY = 13



```

RAD2
Antenna Ey .....
Mode LIN(1) .....
SUM/SEP SUM .....
Toggle OFF .....

RAD1
Antenna Ex .....
Mode LIS(2,3) .....
SUM/SEP SUM .....
Toggle OFF .....

TNR
Antenna ExEy .....
Mode A-32 .....
Sweep ACE .....
  
```