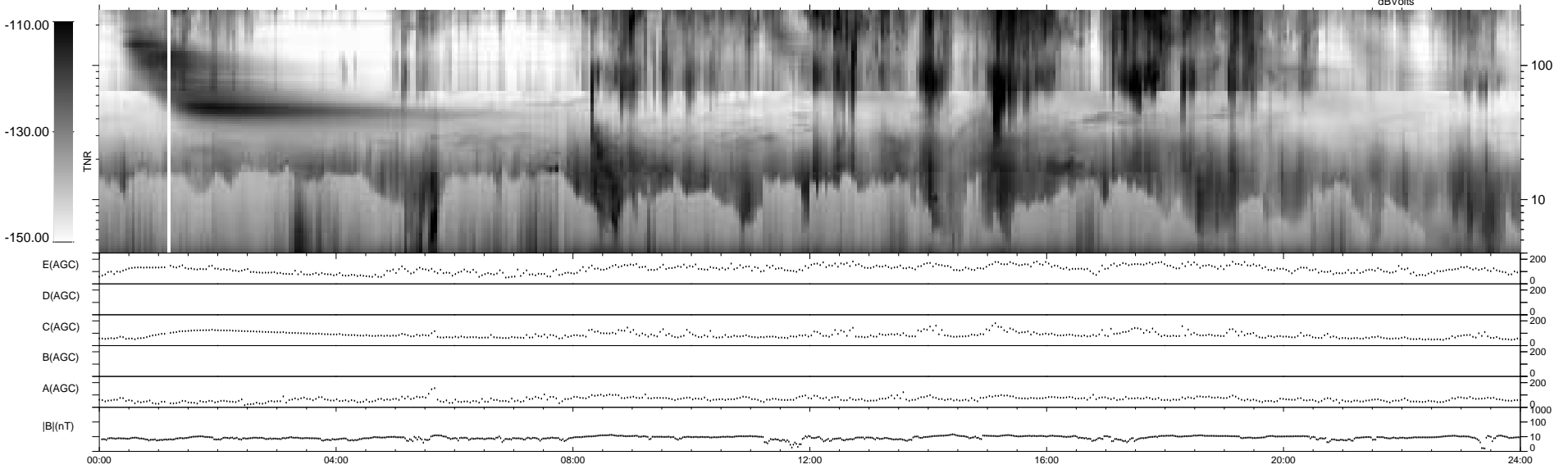
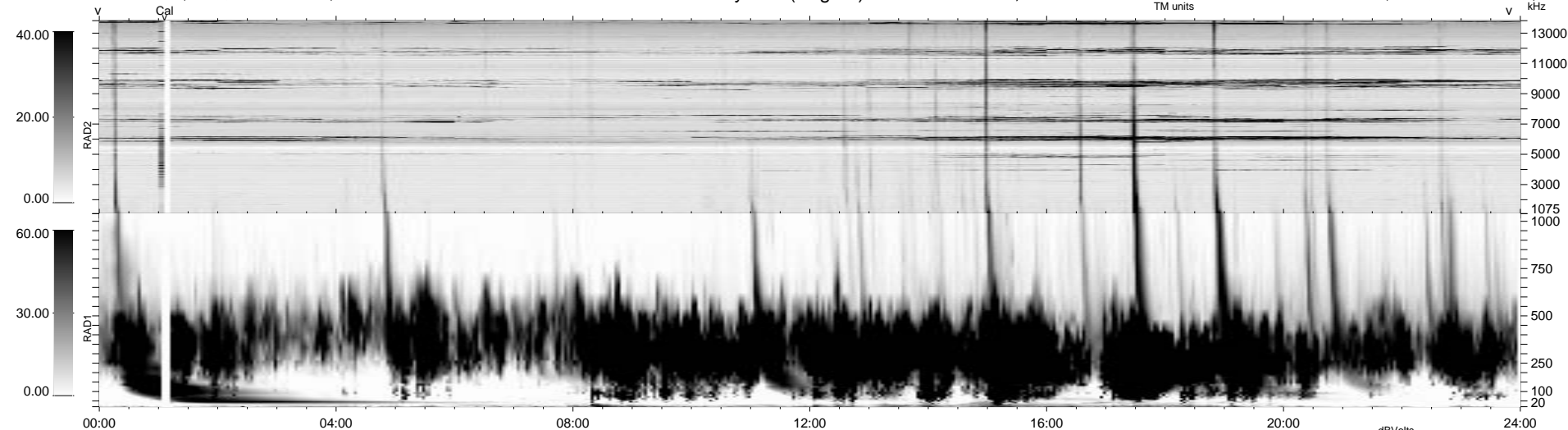


0 bad + 2 good MF/ZMF projected (100%) - 0 missing MFs  
 Avg interval = 180 secs  
 Re = -234.00 (-232.15, 26.75, -12.17 GSE)

1.7d VMS-SunOS LZ version = v01  
 DAILY Wed Sep 3, 2008  
 Re = 233.50 (-231.51, 28.06, -11.71 GSE)

WIND/WAVES Summary Plot (Page 1) for 04-JAN-2004, DOY = 4



RAD2  
 Antenna Ey .....  
 Mode LIN(1) .....  
 SUM/SEP SUM .....  
 Toggle OFF .....  
 RAD1  
 Antenna Ex .....  
 Mode LIS(2,3) .....  
 SUM/SEP SUM .....  
 Toggle OFF .....  
 TNR  
 Antenna ExEy .....  
 Mode A-32 .....  
 Sweep ACE .....