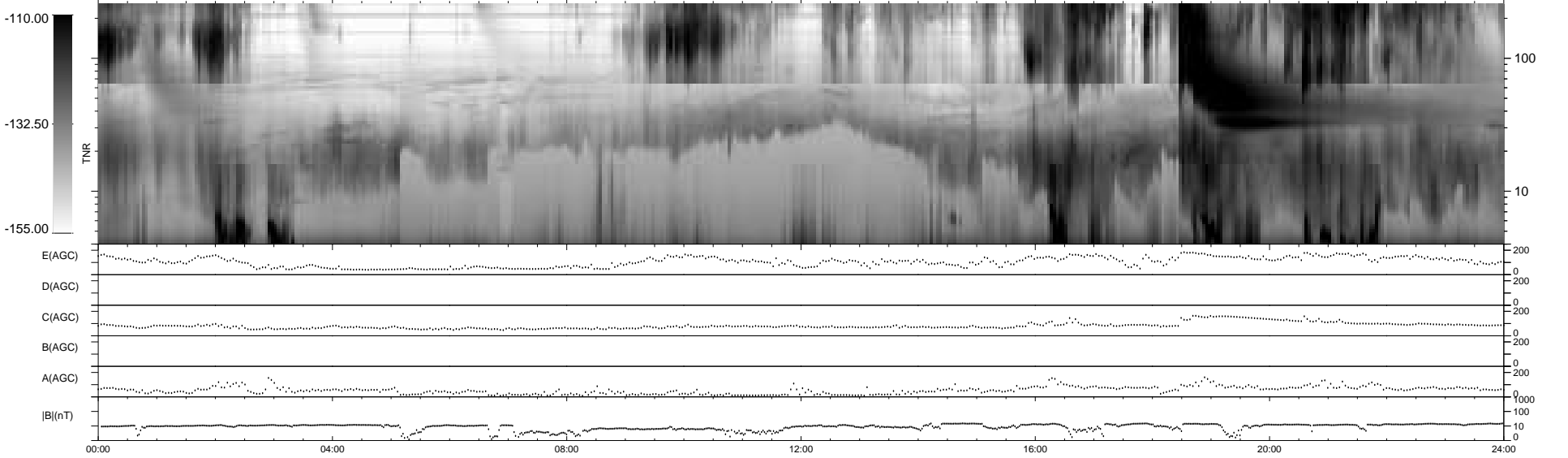
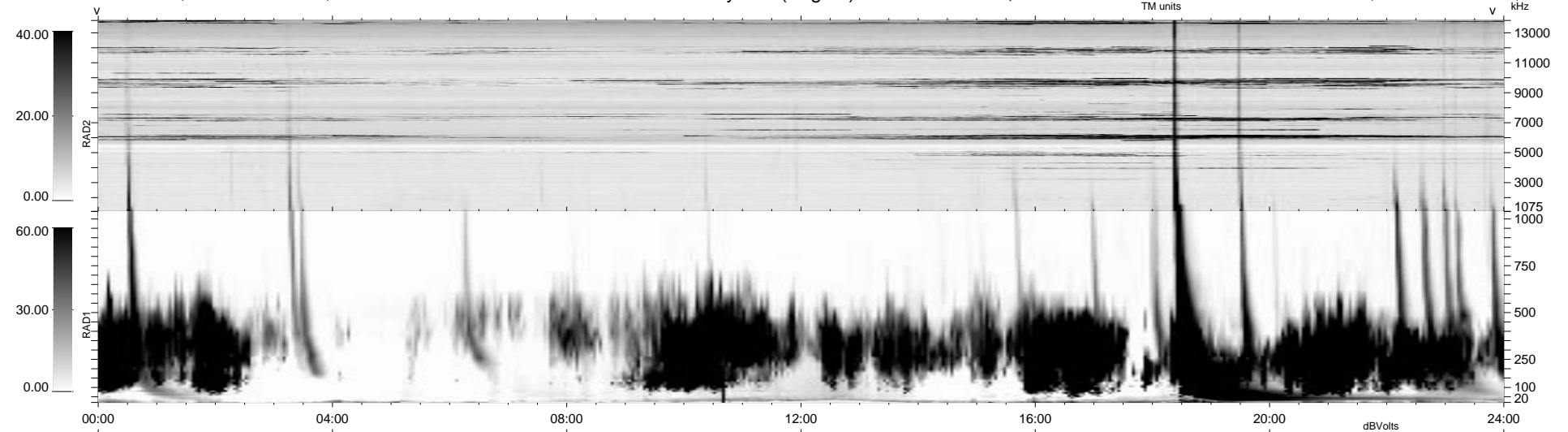


0 bad + 2 good MF/ZMF projected (100%) - 0 missing MFs  
 Avg interval = 180 secs  
 Re = -235.40 (-234.07, 20.77, -13.87 GSE)

1.7d VMS-SunOS LZ version = v01  
 DAILY Mon Sep 8, 2008  
 Re = 235.14 (-233.69, 22.35, -13.47 GSE)

WIND/WAVES Summary Plot (Page 1) for 31-DEC-2003, DOY = 365



RAD2  
 Antenna Ey .....  
 Mode LIN(1) .....  
 SUM/SEP SUM .....  
 Toggle OFF .....  
 RAD1  
 Antenna Ex .....  
 Mode LIS(2,3) .....  
 SUM/SEP SUM .....  
 Toggle OFF .....  
 TNR  
 Antenna ExEy .....  
 Mode A-32 .....  
 Sweep ACE .....