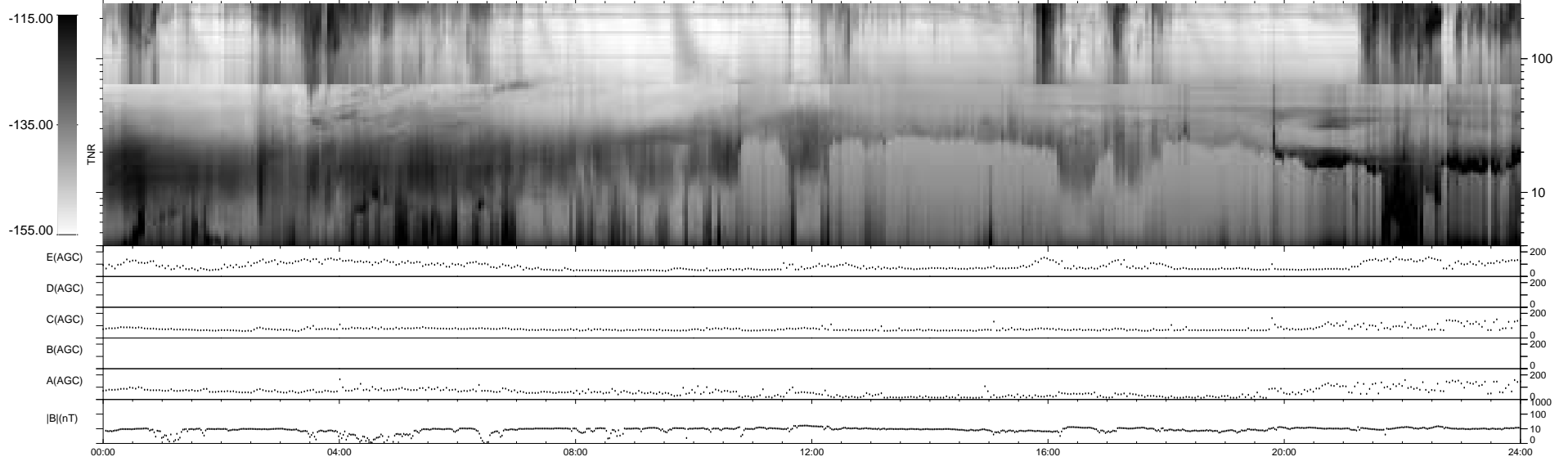
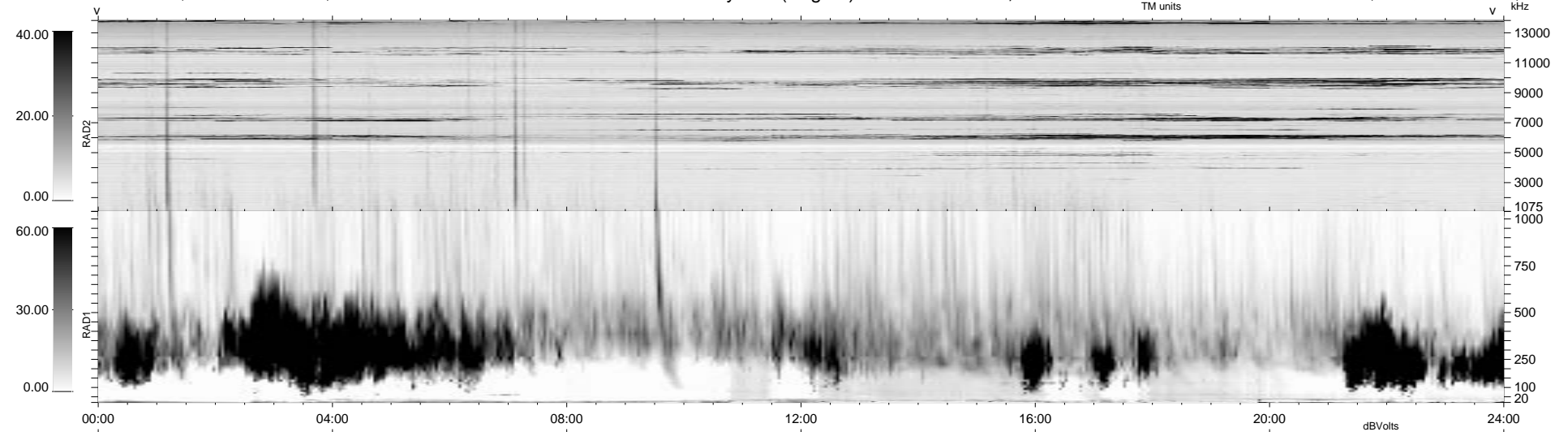


0 bad + 2 good MF/ZMF projected (100%) - 0 missing MFs
 Avg interval = 180 secs
 Re = -236.05 (-235.15, 13.75, -15.27 GSE)

1.7d VMS-SunOS LZ version = v01
 DAILY Mon Sep 8, 2008
 Re = 235.93 (-234.94, 15.58, -14.96 GSE)

WIND/WAVES Summary Plot (Page 1) for 27-DEC-2003, DOY = 361



```

RAD2
Antenna Ey .....
Mode LIN(1) .....
SUM/SEP SUM .....
Toggle OFF .....

RAD1
Antenna Ex .....
Mode LIS(2,3) .....
SUM/SEP SUM .....
Toggle OFF .....

TNR
Antenna ExEy .....
Mode A-32 .....
Sweep ACE .....
  
```