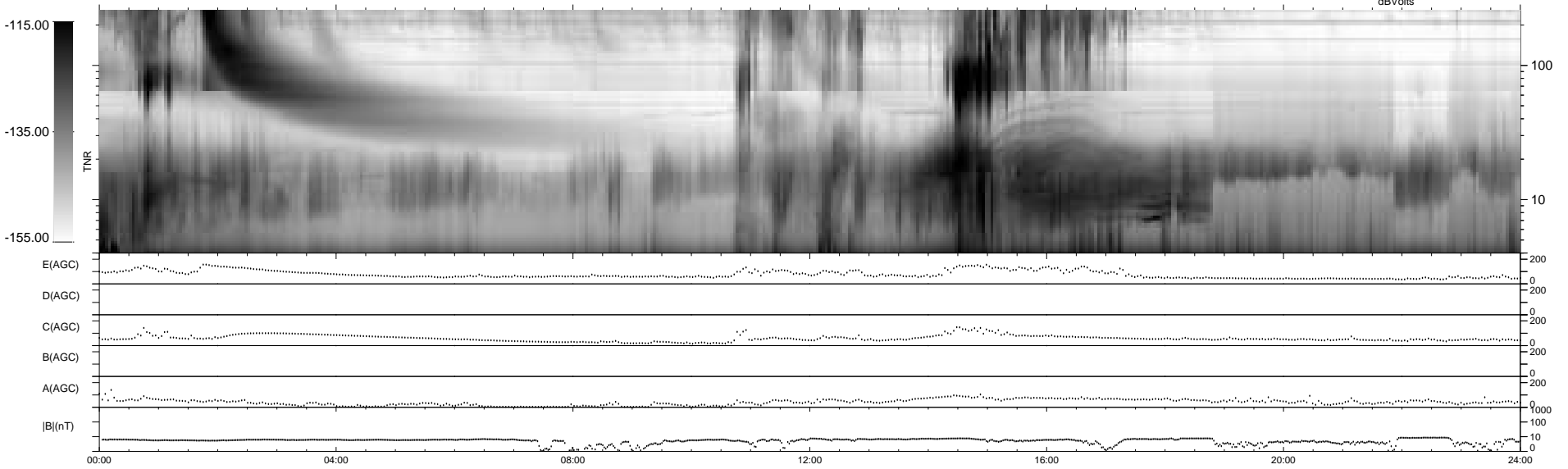
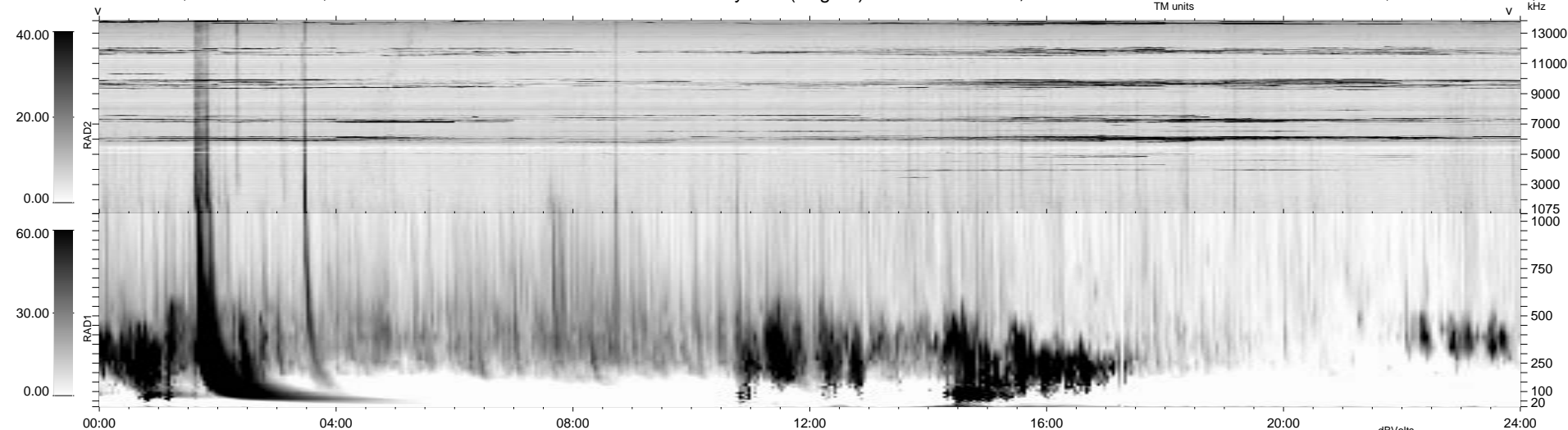


0 bad + 2 good MF/ZMF projected (100%) - 0 missing MFs
 Avg interval = 180 secs
 Re = -236.24 (-235.50, 9.93, -15.85 GSE)

1.7d VMS-SunOS LZ version = v01
 DAILY Mon Sep 8, 2008
 Re = 236.15 (-235.34, 11.85, -15.57 GSE)

WIND/WAVES Summary Plot (Page 1) for 25-DEC-2003, DOY = 359



RAD2
 Antenna Ey
 Mode LIN(1)
 SUM/SEP SUM
 Toggle OFF

RAD1
 Antenna Ex
 Mode LIS(2,3)
 SUM/SEP SUM
 Toggle OFF

TNR
 Antenna ExEy
 Mode A-32
 Sweep ACE