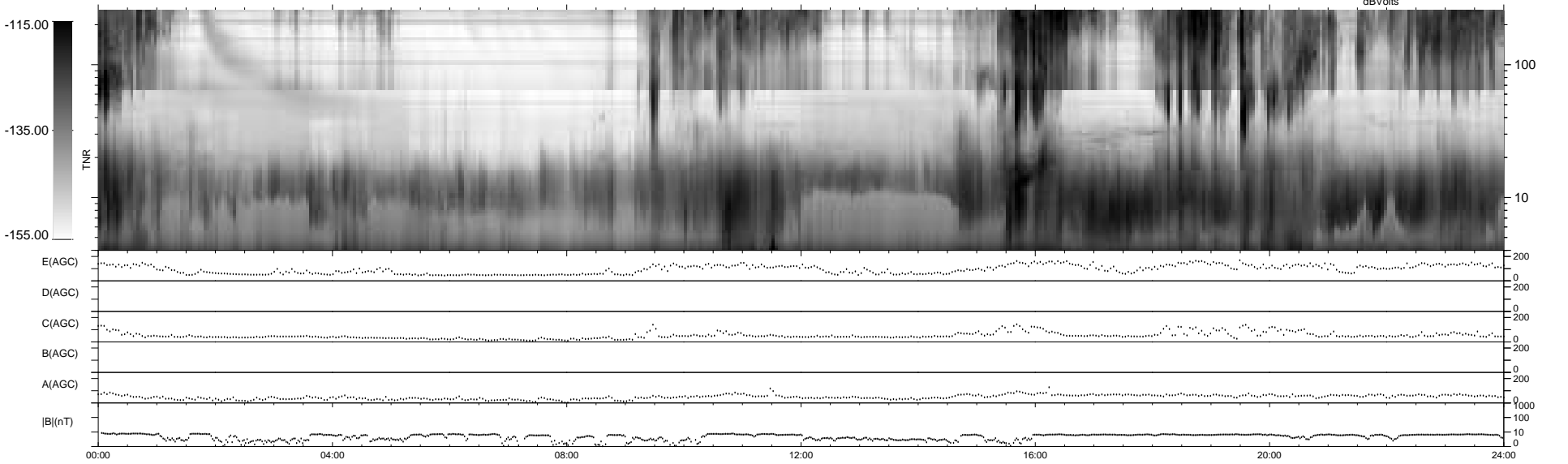
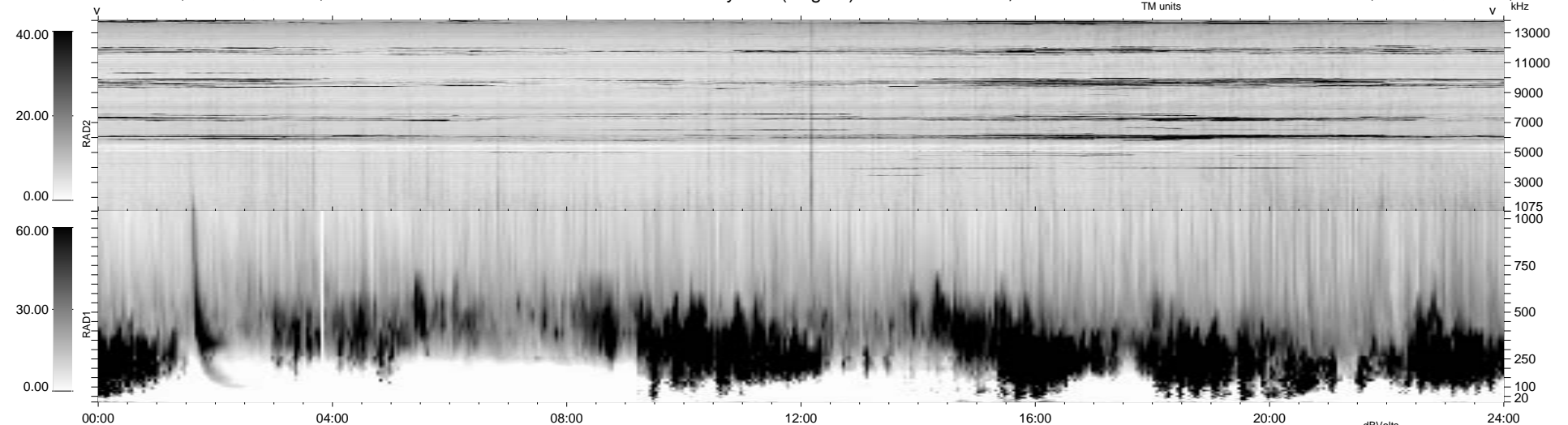


0 bad + 2 good MF/ZMF projected (100%) - 0 missing MFs  
 Avg interval = 180 secs  
 Re = -236.42 (-235.78, 5.99, -16.34 GSE)

1.7d VMS-SunOS LZ version = v01  
 DAILY Mon Sep 8, 2008  
 Re = 236.33 (-235.65, 7.95, -16.11 GSE)

WIND/WAVES Summary Plot (Page 1) for 23-DEC-2003, DOY = 357



RAD2  
 Antenna Ey  
 Mode LIN(1)  
 SUM/SEP SUM  
 Toggle OFF

RAD1  
 Antenna Ex  
 Mode LIS(2,3)  
 SUM/SEP SUM  
 Toggle OFF

TNR  
 Antenna ExEy  
 Mode A-32  
 Sweep ACE