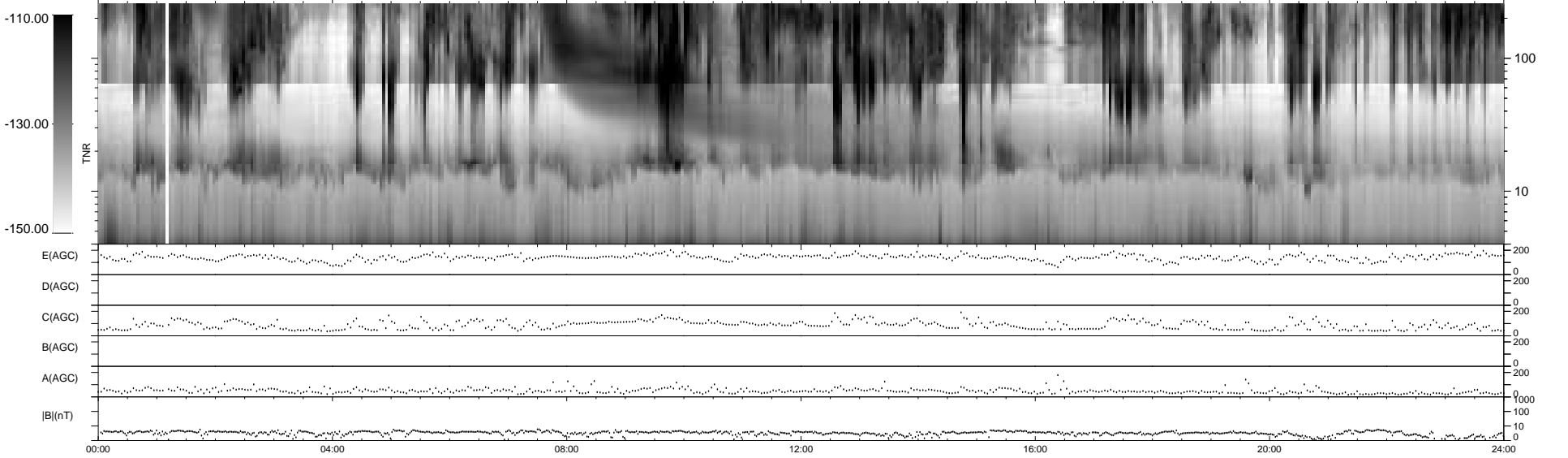
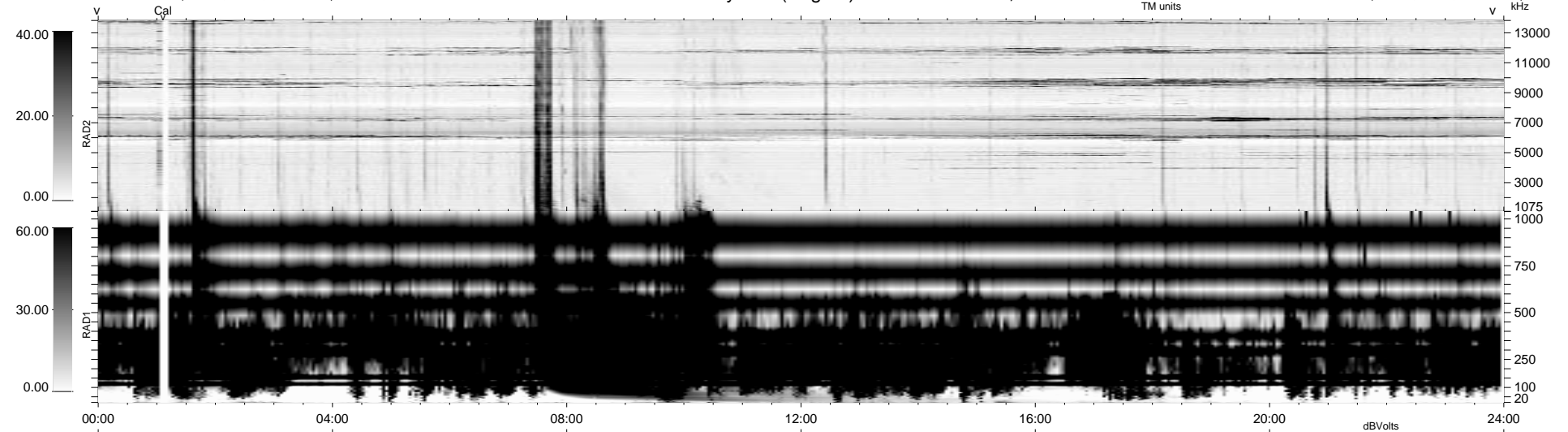


0 bad + 2 good MF/ZMF projected (100%) - 0 missing MFs  
 Avg interval = 180 secs  
 Re = -212.37 (-208.40, -39.09, -11.89 GSE)

1.7d VMS-SunOS LZ version = v01  
 DAILY Mon Sep 8, 2008  
 Re = 213.90 (-209.96, -38.95, -12.36 GSE)

WIND/WAVES Summary Plot (Page 1) for 18-NOV-2003, DOY = 322



```

RAD2
Antenna Ey .....
Mode LIN(1) .....
SUM/SEP SEP .....
Toggle OFF .....

RAD1
Antenna Ex .....
Mode LIS(2,4) .....
SUM/SEP SUM .....
Toggle OFF .....

TNR
Antenna ExEy .....
Mode A-32 .....
Sweep ACE .....
  
```