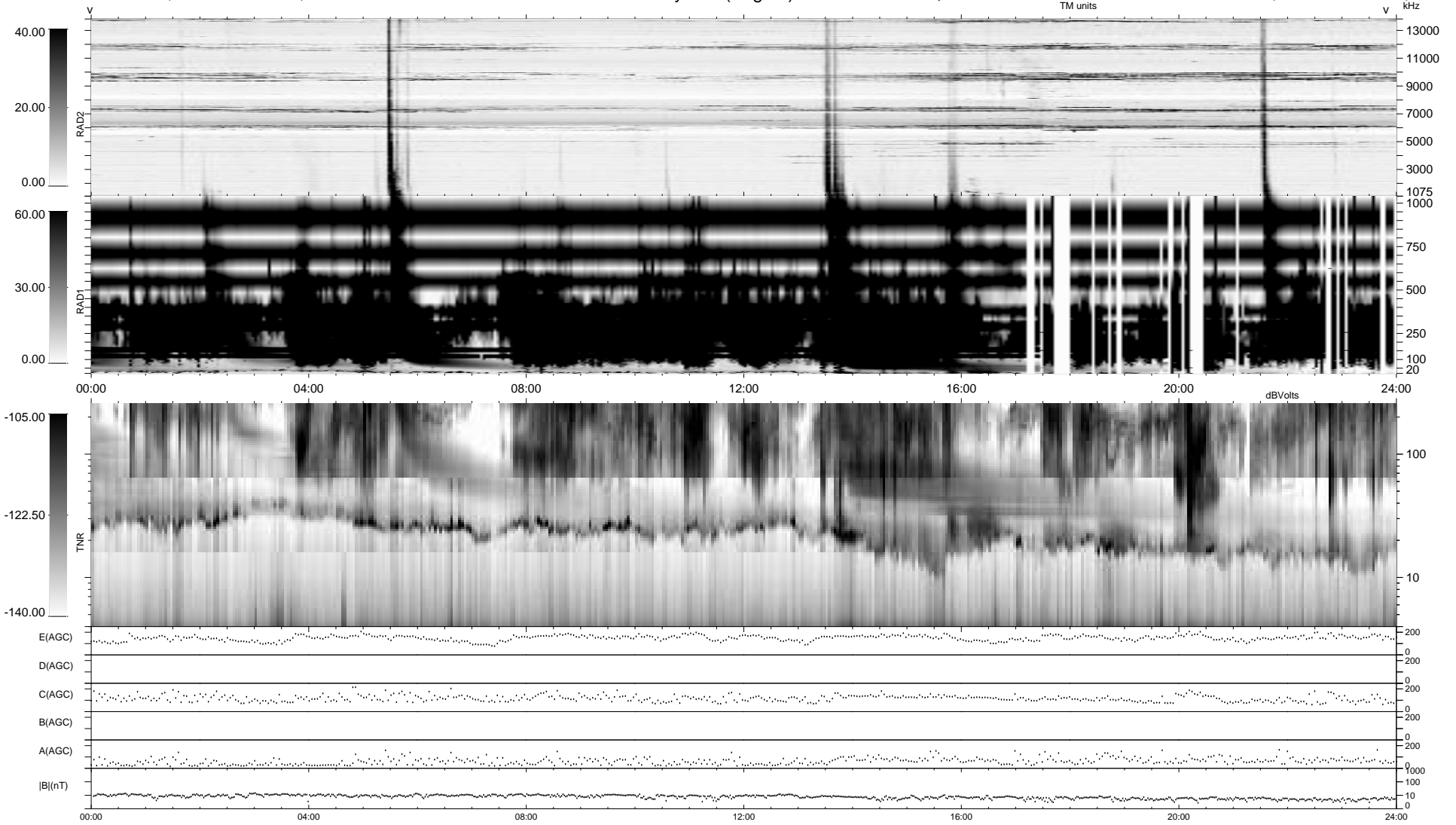


0 bad + 2 good MF/ZMF projected (100%) - 0 missing MFs
 Avg interval = 180 secs
 Re = -198.79 (-195.32, -36.05, -8.17 GSE)

1.7d VMS-SunOS LZ version = v01
 DAILY Fri Sep 5, 2008
 Re = 201.07 (-197.46, -36.92, -8.74 GSE)

WIND/WAVES Summary Plot (Page 1) for 11-NOV-2003, DOY = 315



```

RAD2
Antenna Ey .....
Mode LIN(1) .....
SUM/SEP SEP .....
Toggle OFF .....

RAD1
Antenna Ex .....
Mode LIS(2,4) .....
SUM/SEP SUM .....
Toggle OFF .....

TNR
Antenna ExEy .....
Mode A-32 .....
Sweep ACE .....
  
```