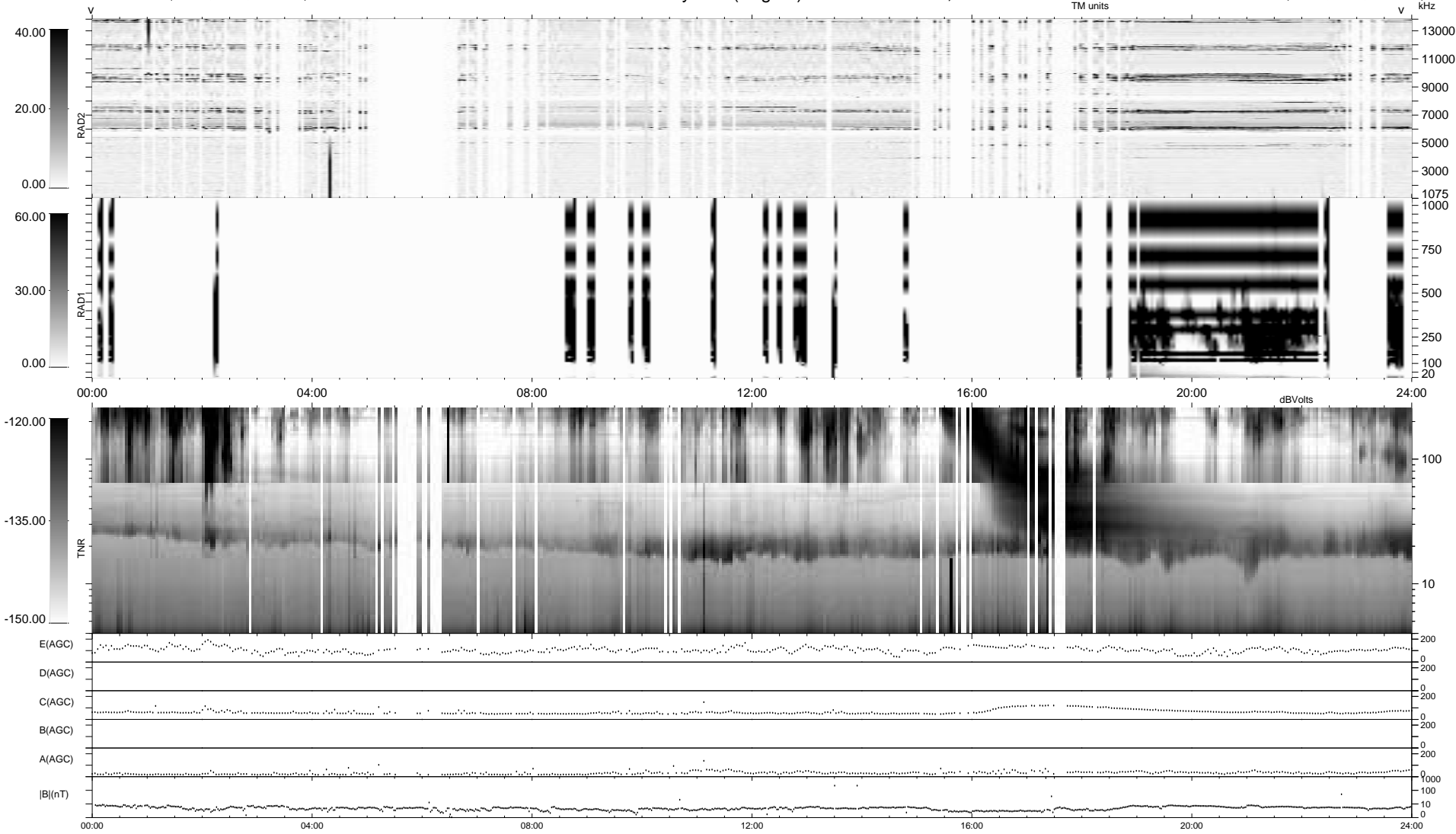


0 bad + 2 good MF/ZMF projected (100%) - 0 missing MFs  
 Avg interval = 180 secs  
 Re = -188.20 (-185.52, -31.12, -5.73 GSE)

1.7d VMS-SunOS LZ version = v04  
 DAILY Fri Sep 5, 2008  
 Re = 191.05 (-188.14, -32.56, -6.36 GSE)

### WIND/WAVES Summary Plot (Page 1) for 07-NOV-2003, DOY = 311



RAD2  
 Antenna Ey  
 Mode LIN(1)  
 SUM/SEP SEP  
 Toggle OFF

RAD1  
 Antenna  
 Mode  
 SUM/SEP  
 Toggle

TNR  
 Antenna ExEy  
 Mode A-32  
 Sweep ACE