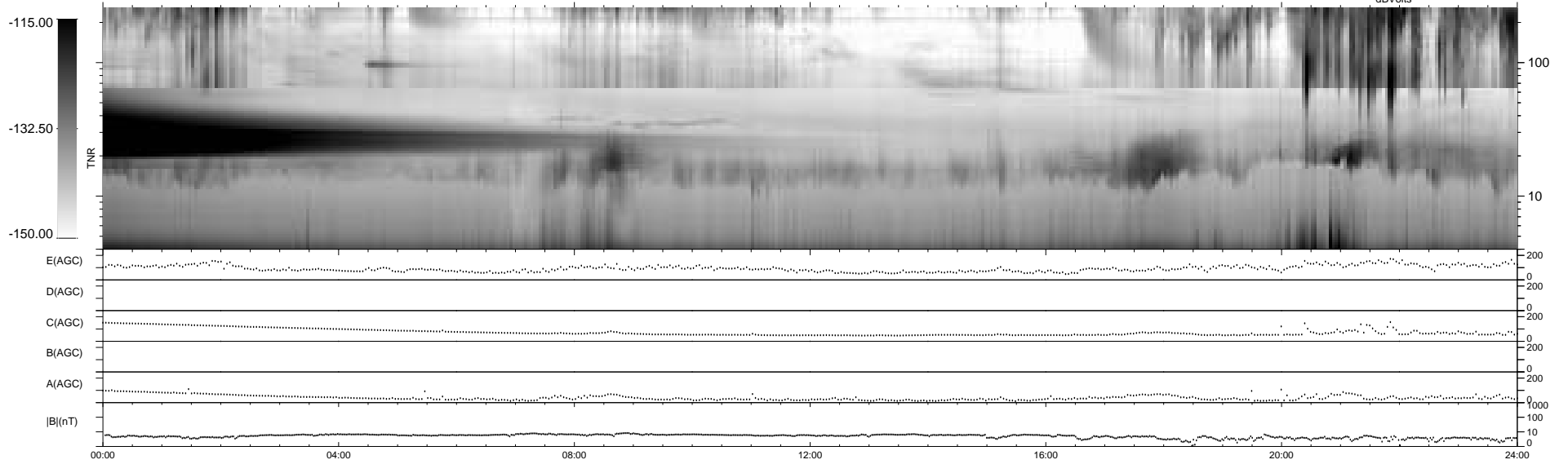
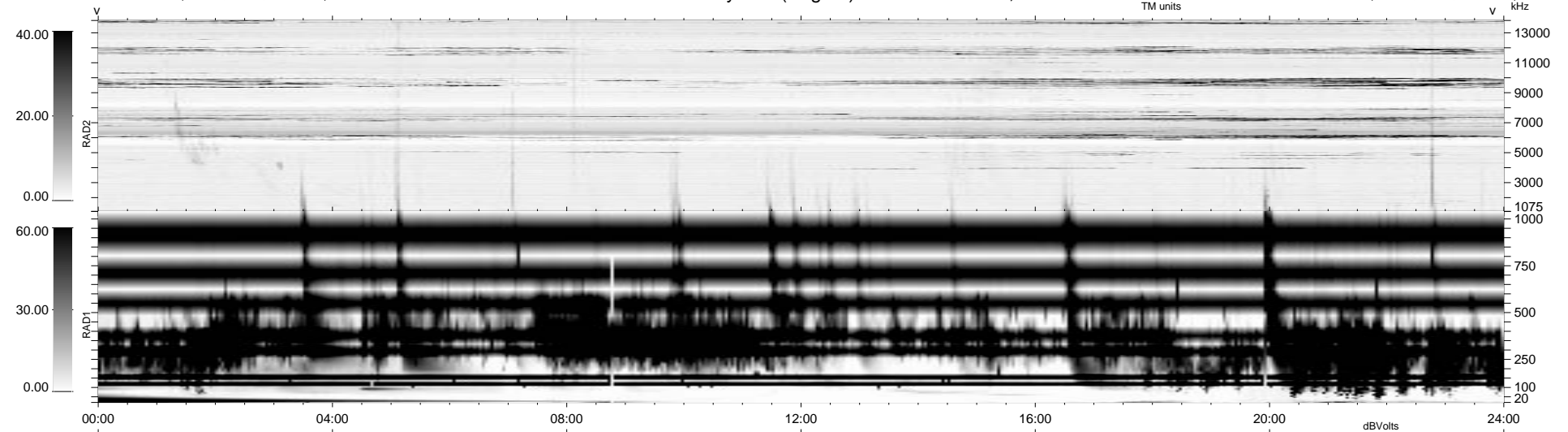


0 bad + 2 good MF/ZMF projected (100%) - 0 missing MFs  
 Avg interval = 180 secs  
 Re = -182.01 (-179.82, -27.82, -4.44 GSE)

1.7d VMS-SunOS LZ version = v01  
 DAILY Fri Sep 5, 2008  
 Re = 185.16 (-182.72, -29.53, -5.09 GSE)

### WIND/WAVES Summary Plot (Page 1) for 05-NOV-2003, DOY = 309



RAD2  
 Antenna Ey  
 Mode LIN(1)  
 SUM/SEP SEP  
 Toggle OFF

RAD1  
 Antenna Ex  
 Mode LIS(2,4)  
 SUM/SEP SUM  
 Toggle OFF

TNR  
 Antenna ExEy  
 Mode A-32  
 Sweep ACE