

0 bad + 2 good MF/ZMF projected (100%) - 0 missing MFs
 Avg interval = 180 secs
 Re = -163.79 (-162.88, -17.18, -0.99 GSE)

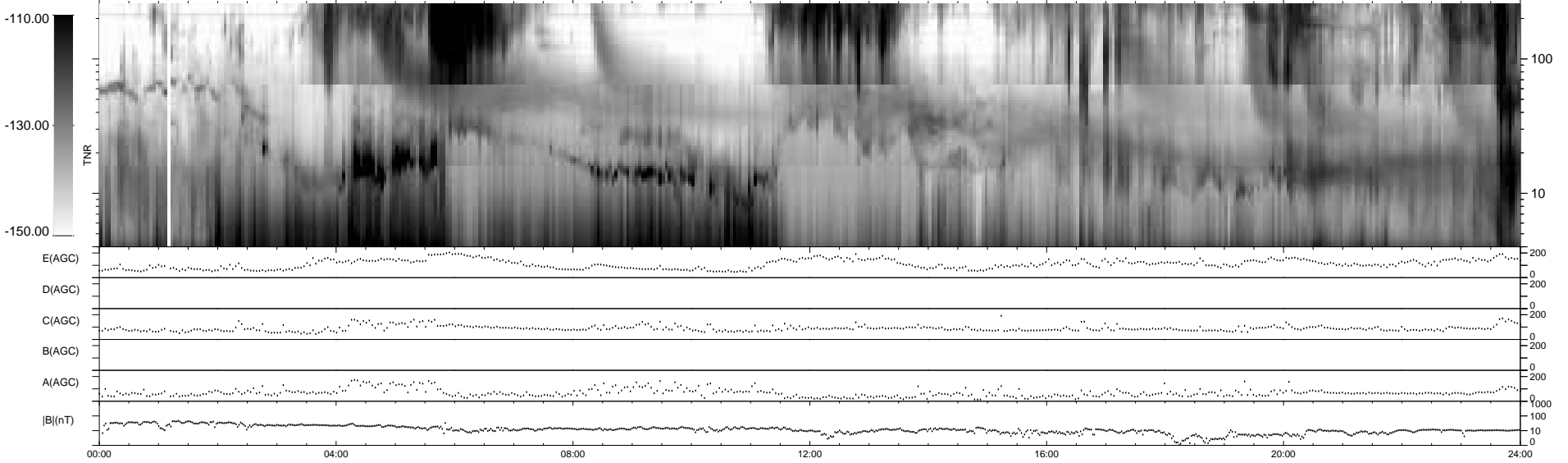
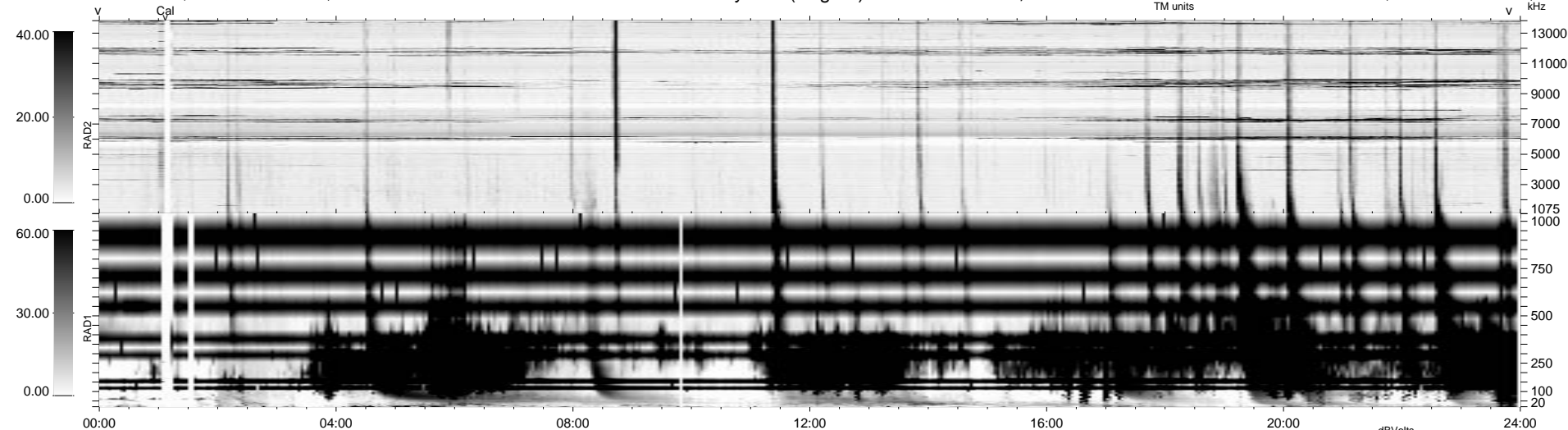
1.7d VMS-SunOS

LZ version = v01

WIND/WAVES Summary Plot (Page 1) for 31-OCT-2003, DOY = 304

DAILY Fri Sep 5, 2008

Re = -167.73 (-166.58, -19.57, -1.70 GSE)



RAD2
 Antenna Ey
 Mode LIN(1)
 SUM/SEP SEP
 Toggle OFF

RAD1
 Antenna Ex
 Mode LIS(2,4)
 SUM/SEP SUM
 Toggle OFF

TNR
 Antenna ExEy
 Mode A-32
 Sweep ACE