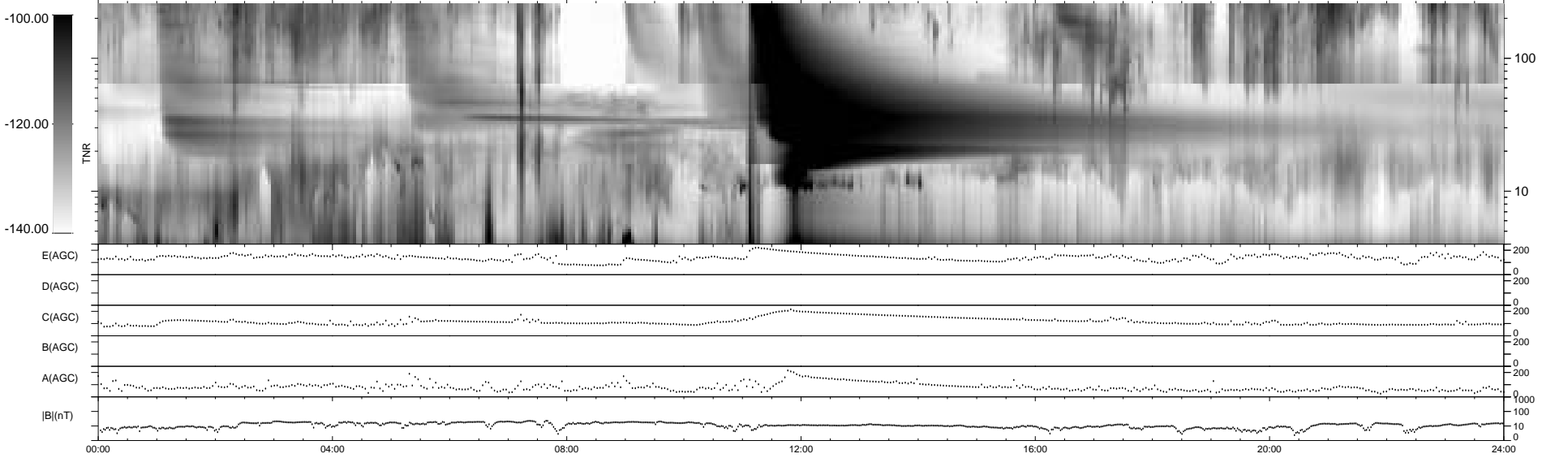
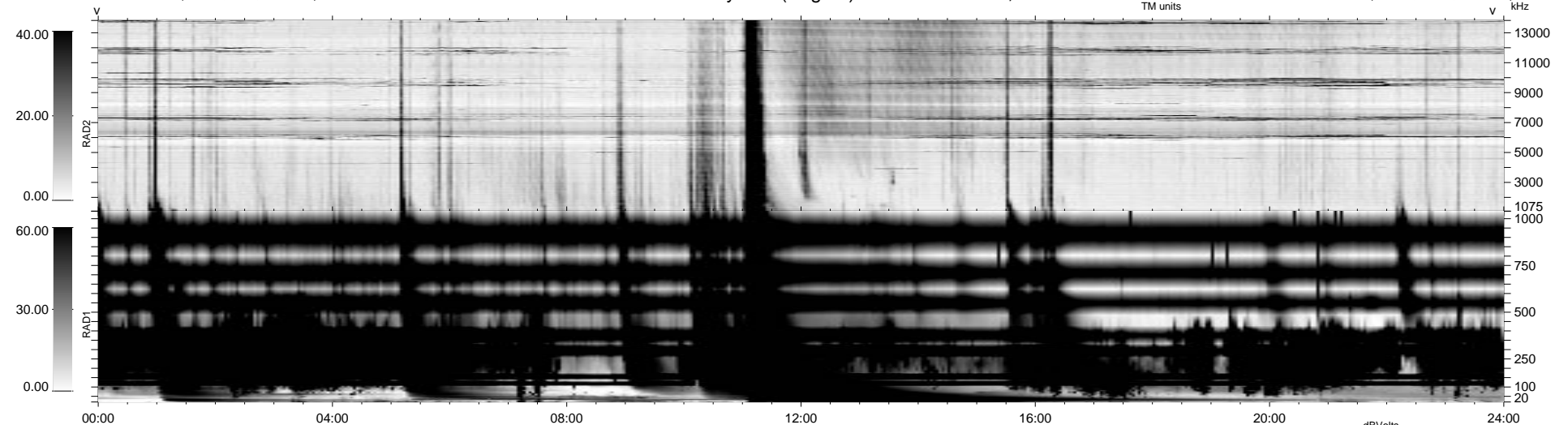


0 bad + 2 good MF/ZMF projected (100%) - 0 missing MFs
 Avg interval = 180 secs
 Re = 150.83 (-150.55, -9.11, 1.16 GSE)

1.7d VMS-SunOS LZ version = v02
 DAILY Fri Sep 5, 2008
 Re = 155.30 (-154.84, -11.94, 0.44 GSE)

WIND/WAVES Summary Plot (Page 1) for 28-OCT-2003, DOY = 301



```

RAD2
Antenna Ey .....
Mode LIN(1) .....
SUM/SEP SEP .....
Toggle OFF .....

RAD1
Antenna Ex .....
Mode LIS(2,4) .....
SUM/SEP SUM .....
Toggle OFF .....

TNR
Antenna ExEy .....
Mode A-32 .....
Sweep ACE .....
  
```