

0 bad + 2 good MF/ZMF projected (100%) - 0 missing MFs  
Avg interval = 180 secs  
Re = -119.20 (-118.52, 11.61, 5.23 GSE)

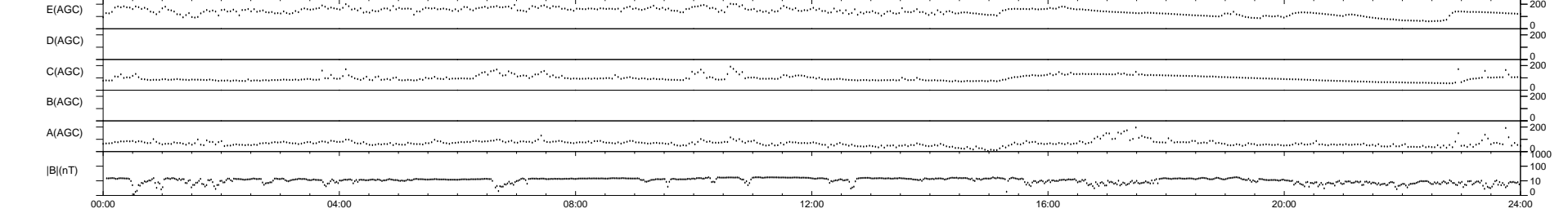
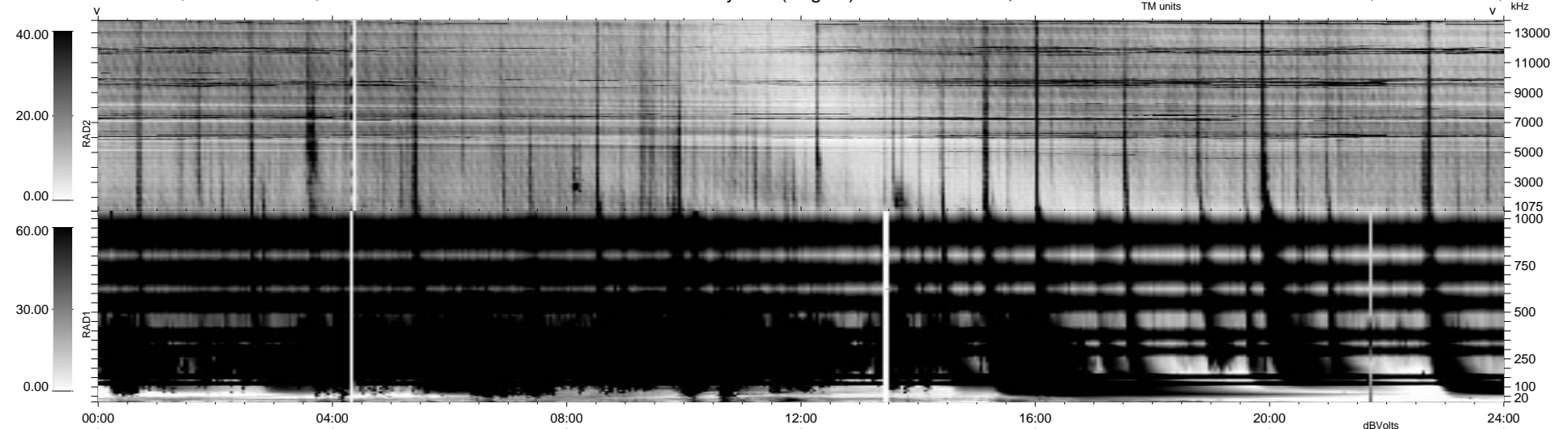
1.7d VMS-SunOS

LZ version = v01

### WIND/WAVES Summary Plot (Page 1) for 22-OCT-2003, DOY = 295

DAILY Fri Sep 5, 2008

Re = 125.09 (-124.77, 7.72, 4.61 GSE)



RAD2  
Antenna Ey .....  
Mode LIN(1) .....  
SUM/SEP SEP .....  
Toggle OFF .....  
RAD1  
Antenna Ex .....  
Mode LIS(2/4) .....  
SUM/SEP SUM .....  
Toggle OFF .....  
TNR  
Antenna ExEy .....  
Mode A-32 .....  
Sweep ACE .....