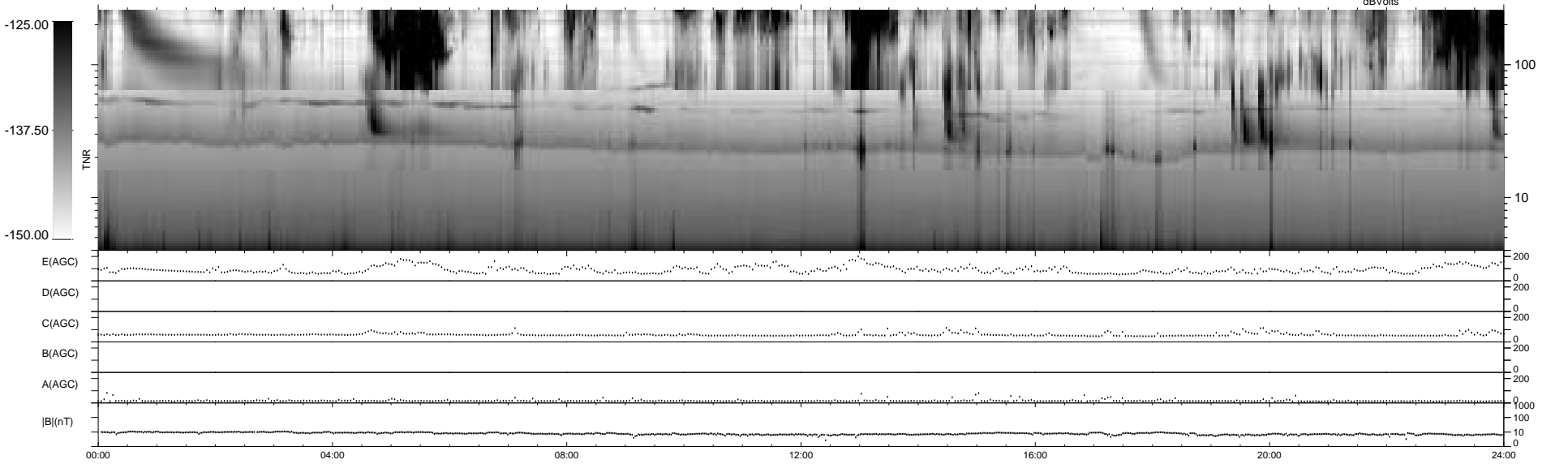
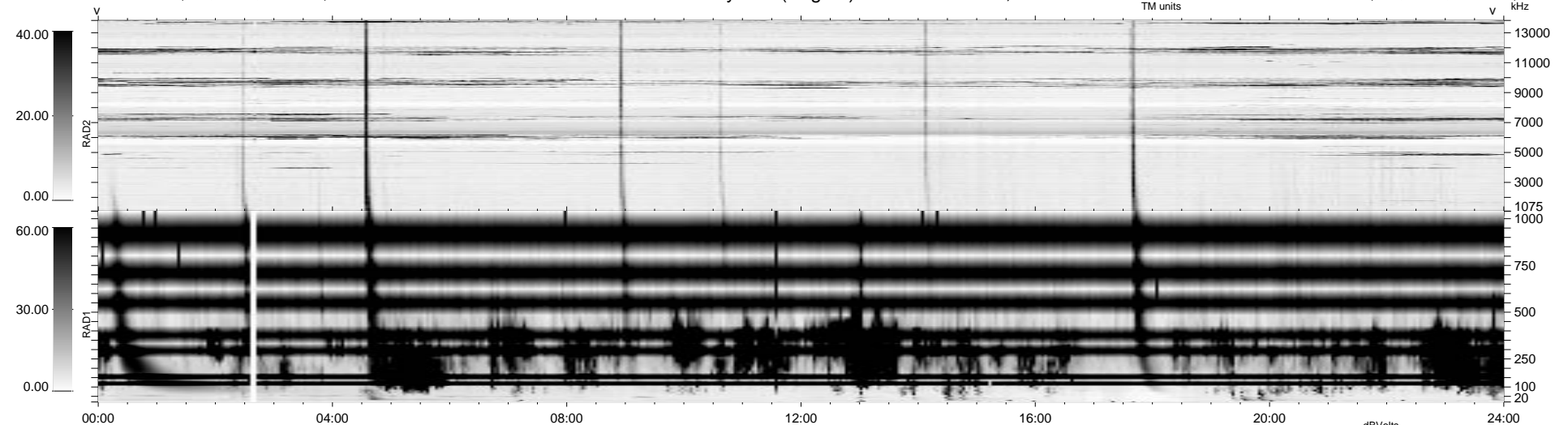


0 bad + 2 good MF/ZMF projected (100%) - 0 missing MFs  
 Avg interval = 180 secs  
 Re = -146.14 (-9.21, -145.31, -12.48 GSE)

1.7d VMS-SunOS LZ version = v01  
 DAILY Fri Sep 5, 2008  
 Re = 142.10 (-5.76, -141.41, -12.67 GSE)

WIND/WAVES Summary Plot (Page 1) for 24-SEP-2003, DOY = 267



RAD2  
 Antenna Ey .....  
 Mode LIN(1) .....  
 SUM/SEP SEP .....  
 Toggle OFF .....  
 RAD1  
 Antenna Ex .....  
 Mode LIS(2/4) .....  
 SUM/SEP SUM .....  
 Toggle OFF .....  
 TNR  
 Antenna ExEy .....  
 Mode A-32 .....  
 Sweep ACE .....