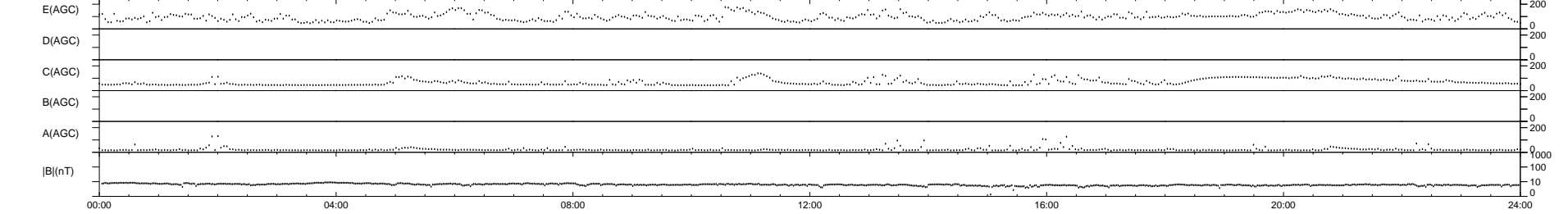
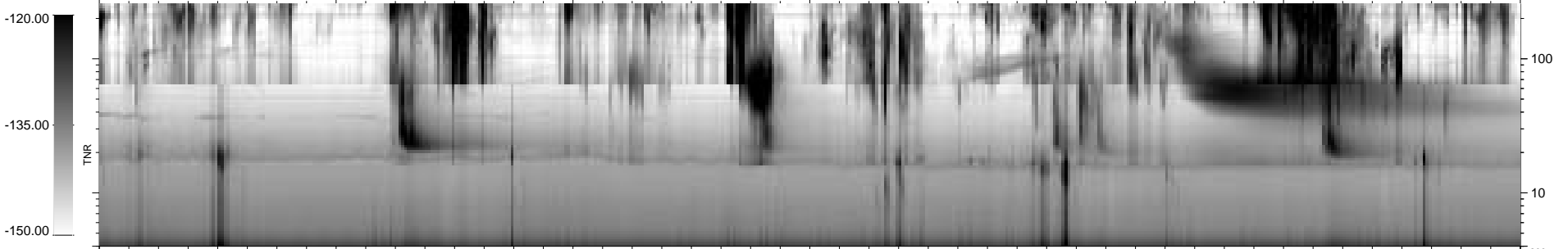
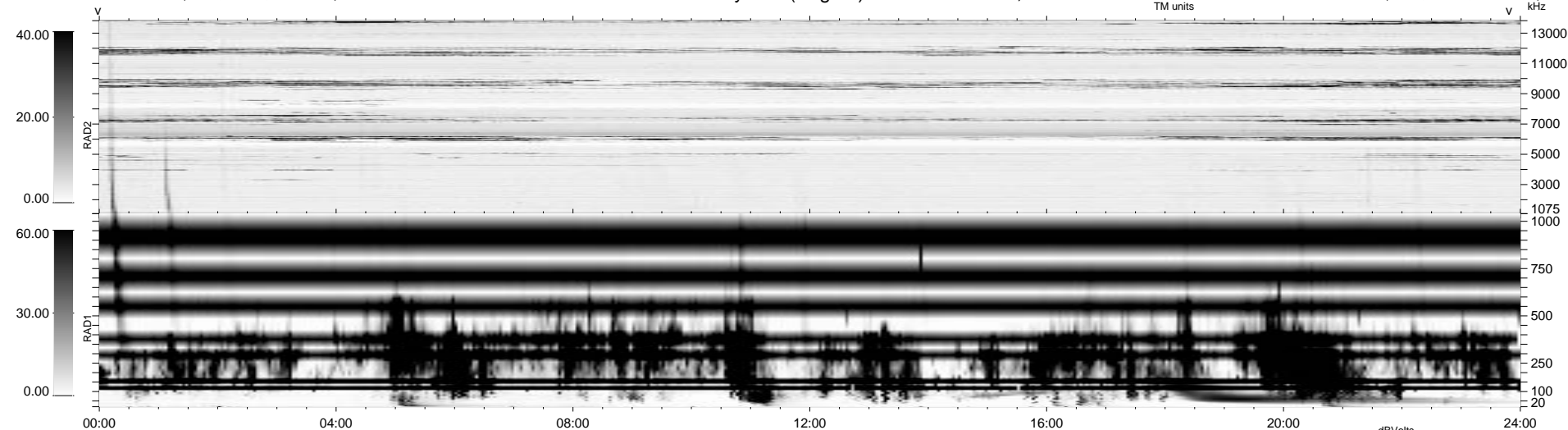


0 bad + 2 good MF/ZMF projected (100%) - 0 missing MFs
 Avg interval = 180 secs
 Re = -162.68 (-27.74, -159.95, -10.57 GSE)

1.7d VMS-SunOS LZ version = v02
 DAILY Fri Sep 5, 2008
 Re = 160.85 (-24.94, -158.52, -10.98 GSE)

WIND/WAVES Summary Plot (Page 1) for 18-SEP-2003, DOY = 261



```

RAD2
Antenna Ey .....
Mode LIN(1) .....
SUM/SEP SEP .....
Toggle OFF .....

RAD1
Antenna Ex .....
Mode LIS(2,4) .....
SUM/SEP SUM .....
Toggle OFF .....

TNR
Antenna ExEy .....
Mode A-32 .....
Sweep ACE .....
  
```