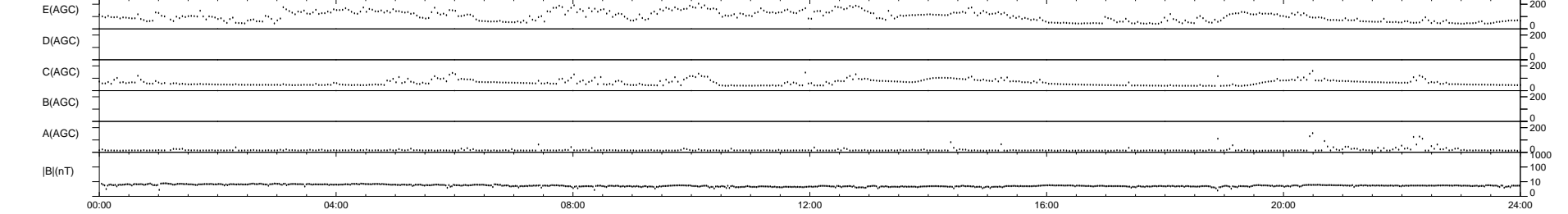
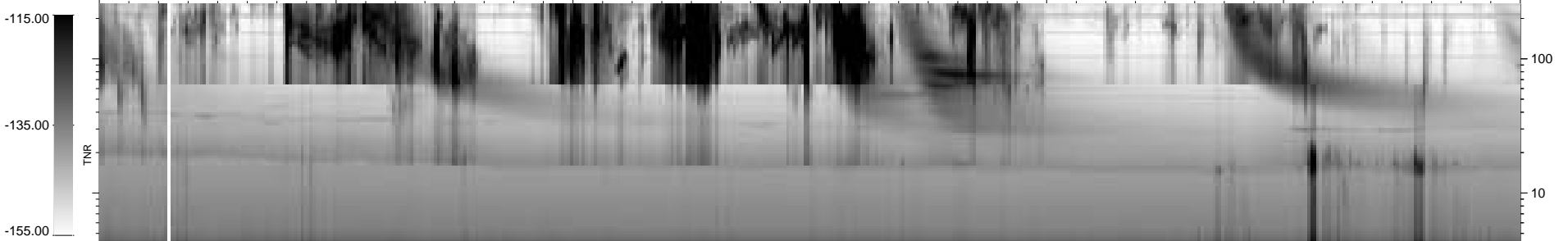
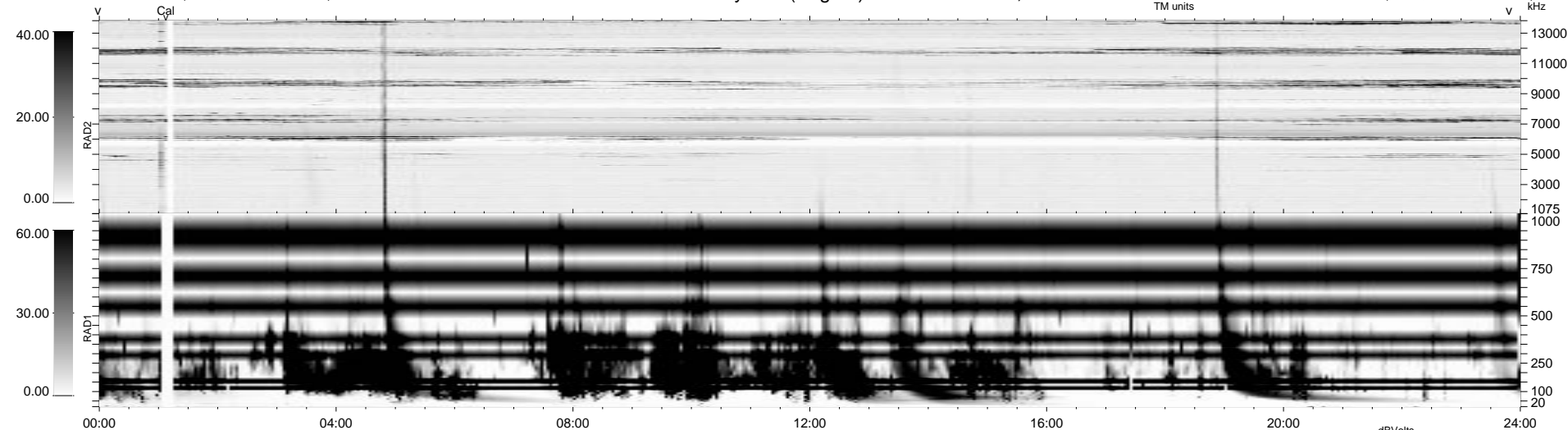


0 bad + 2 good MF/ZMF projected (100%) - 0 missing MFs
 Avg interval = 180 secs
 Re = 157.23 (-57.22, -146.42, -2.82 GSE)

1.7d VMS-SunOS LZ version = v01
 DAILY Fri Sep 5, 2008
 Re = 159.38 (-55.30, -149.44, -3.53 GSE)

WIND/WAVES Summary Plot (Page 1) for 05-SEP-2003, DOY = 248



RAD2
 Antenna Ey
 Mode LIN(1)
 SUM/SEP SEP
 Toggle OFF
 RAD1
 Antenna Ex
 Mode LIS(2,4)
 SUM/SEP SUM
 Toggle OFF
 TNR
 Antenna ExEy
 Mode A-32
 Sweep ACE