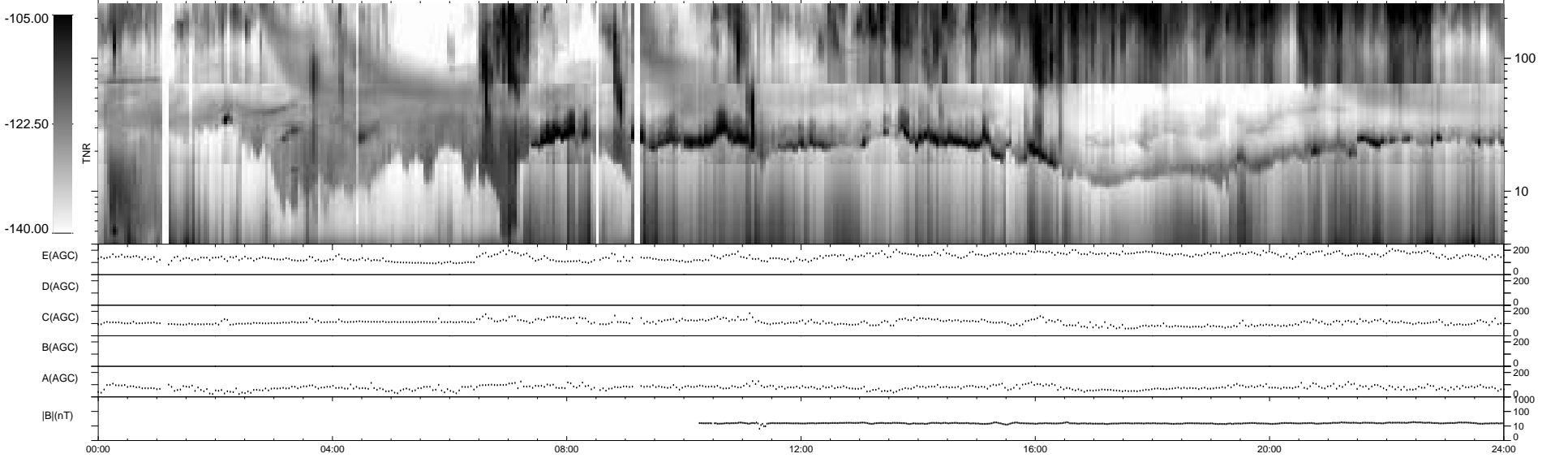
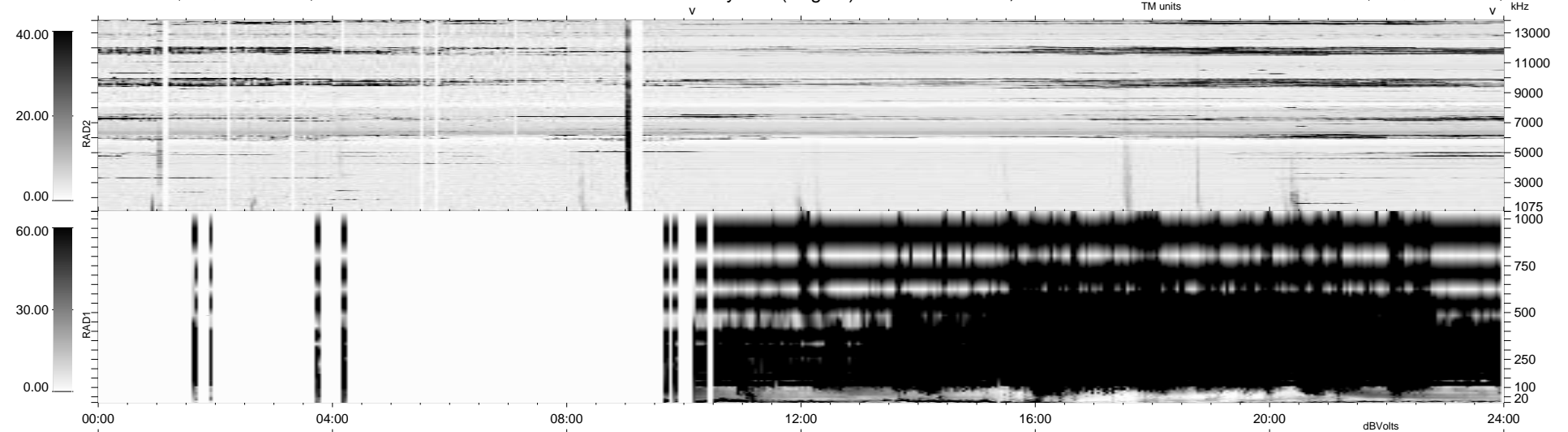


0 bad + 2 good MF/ZMF projected (100%) - 0 missing MFs  
 Avg interval = 180 secs  
 Re = 80.31 (-77.36, -20.20, 7.54 GSE)

1.7d VMS-SunOS LZ version = v01  
 DAILY Fri Sep 5, 2008  
 Re = 83.50 (-78.60, -27.17, 7.50 GSE)

### WIND/WAVES Summary Plot (Page 1) for 18-AUG-2003, DOY = 230



RAD2  
 Antenna Ey .....  
 Mode LIN(1) .....  
 SUM/SEP SEP .....  
 Toggle OFF .....  
 RAD1  
 Antenna .....  
 Mode .....  
 SUM/SEP .....  
 Toggle .....  
 TNR  
 Antenna ExEy .....  
 Mode A-32 .....  
 Sweep ACE .....