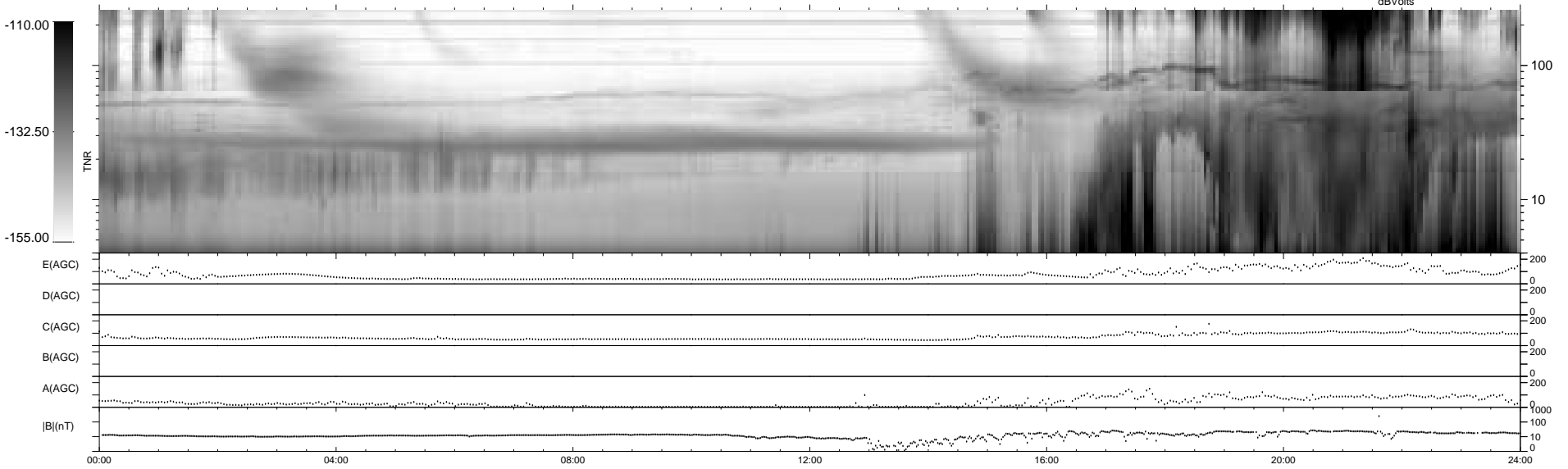
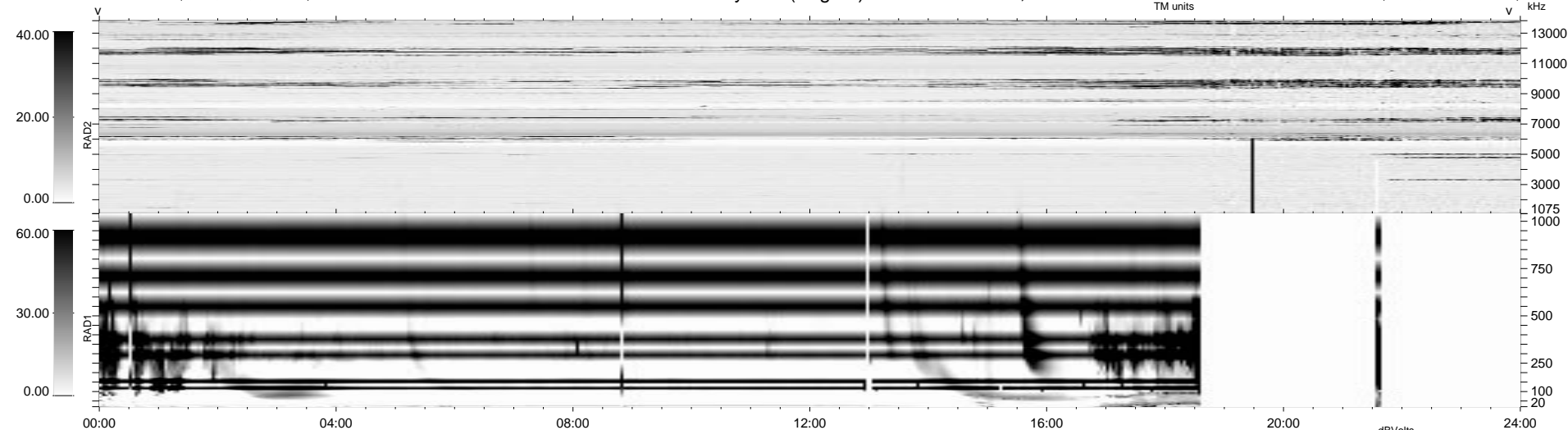


0 bad + 2 good MF/ZMF projected (100%) - 0 missing MFs  
 Avg interval = 180 secs  
 Re = 72.75 (-72.35, -2.06, 7.37 GSE)

1.7d VMS-SunOS LZ version = v02

### WIND/WAVES Summary Plot (Page 1) for 17-AUG-2003, DOY = 229

DAILY Fri Sep 5, 2008  
 Re = 77.94 (-76.15, -14.80, 7.53 GSE)



```

RAD2
Antenna Ey .....
Mode LIN(1) .....
SUM/SEP SEP .....
Toggle OFF .....

RAD1
Antenna Ex .....
Mode LIS(2,4) .....
SUM/SEP SUM .....
Toggle OFF .....

TNR
Antenna ExEy .....
Mode A-32 .....
Sweep ACE .....
  
```