

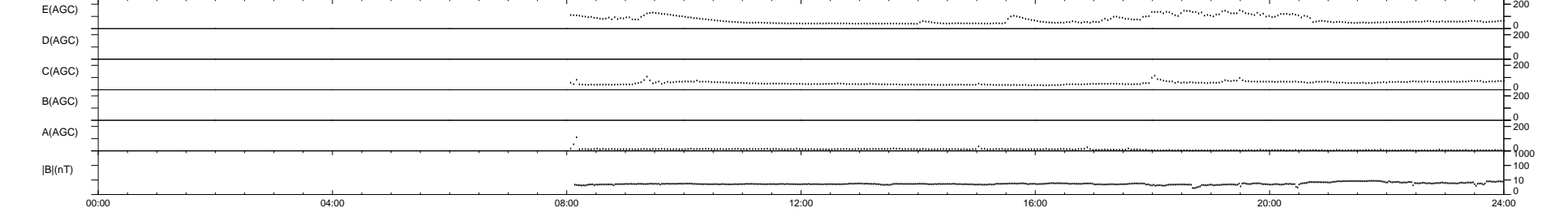
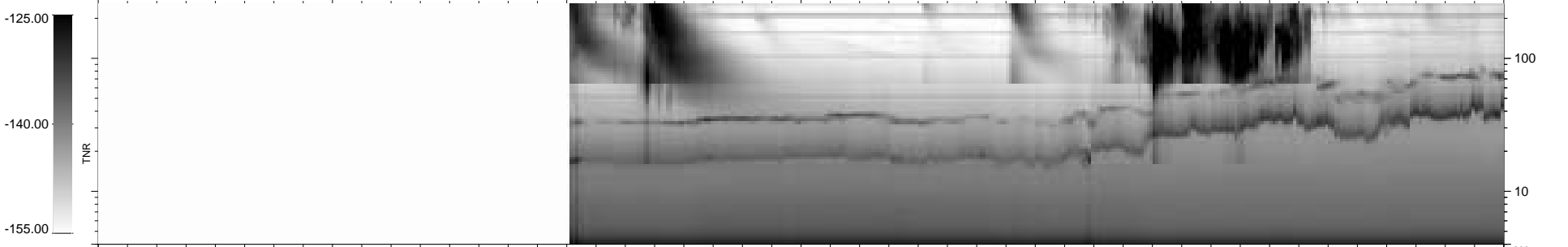
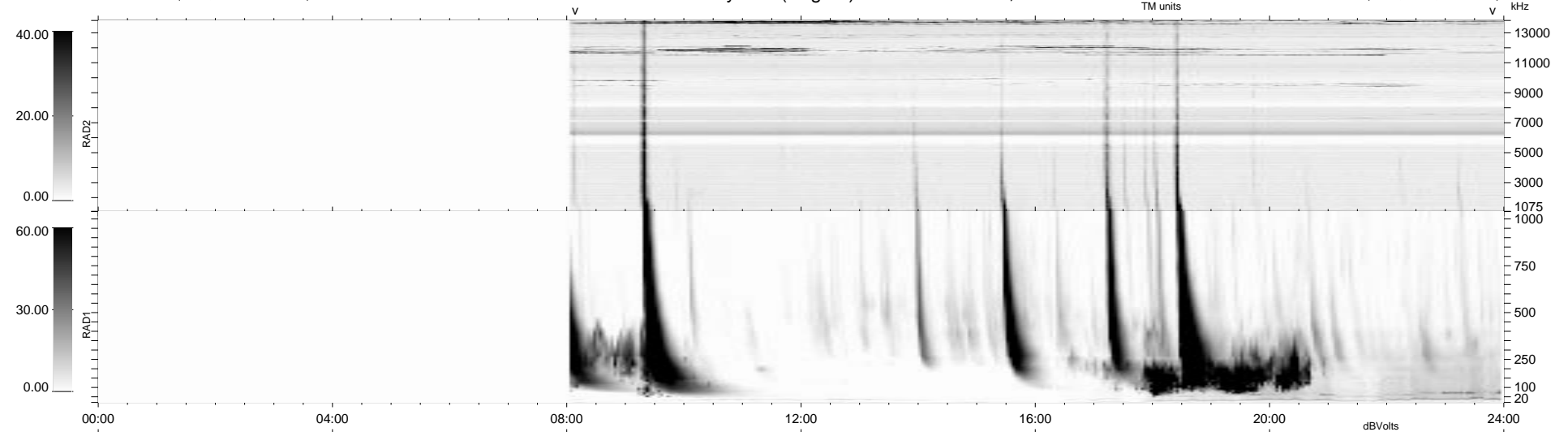
0 bad + 2 good MF/ZMF projected (100%) - 0 missing MFs
Avg interval = 180 secs
Re = 93.59 (75.10, 55.24, -8.18 GSE)

1.7d VMS-SunOS

LZ version = v01

WIND/WAVES Summary Plot (Page 1) for 04-AUG-2003, DOY = 216

DAILY Fri Sep 5, 2008
Re = 89.99 (68.38, 58.03, -7.46 GSE)



RAD2 Antenna Mode SUM/SEP Toggle
RAD1 Antenna Mode SUM/SEP Toggle
TNR Antenna Mode Sweep