

0 bad + 2 good MF/ZMF projected (100%) - 0 missing MFs  
 Avg interval = 180 secs  
 Re = -217.88 (206.33, -69.77, -5.63 GSE)

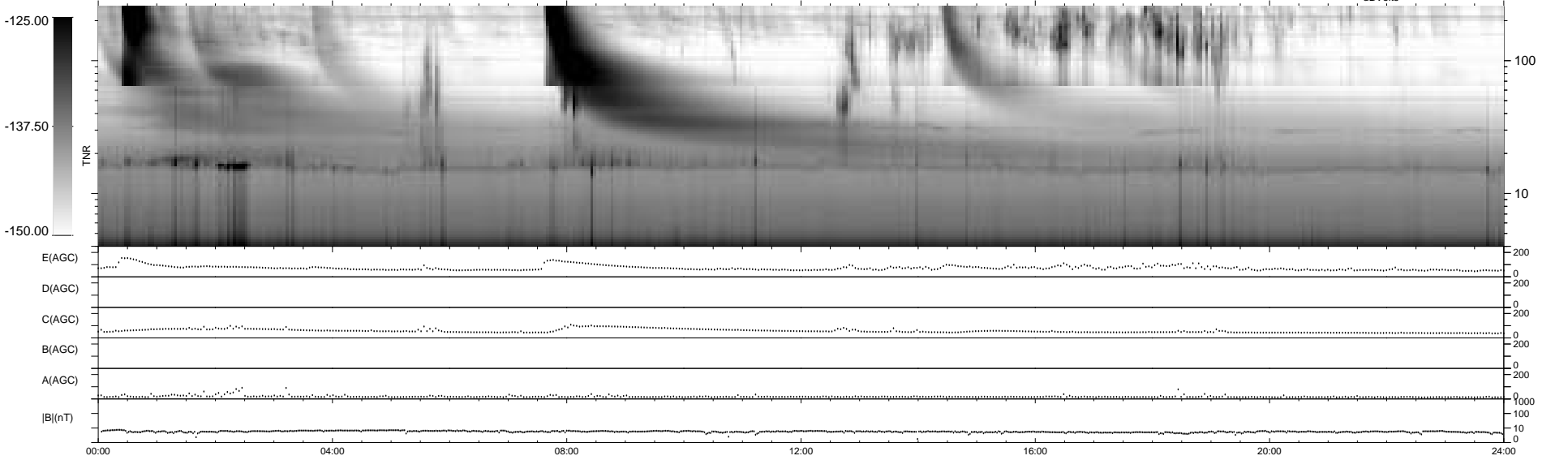
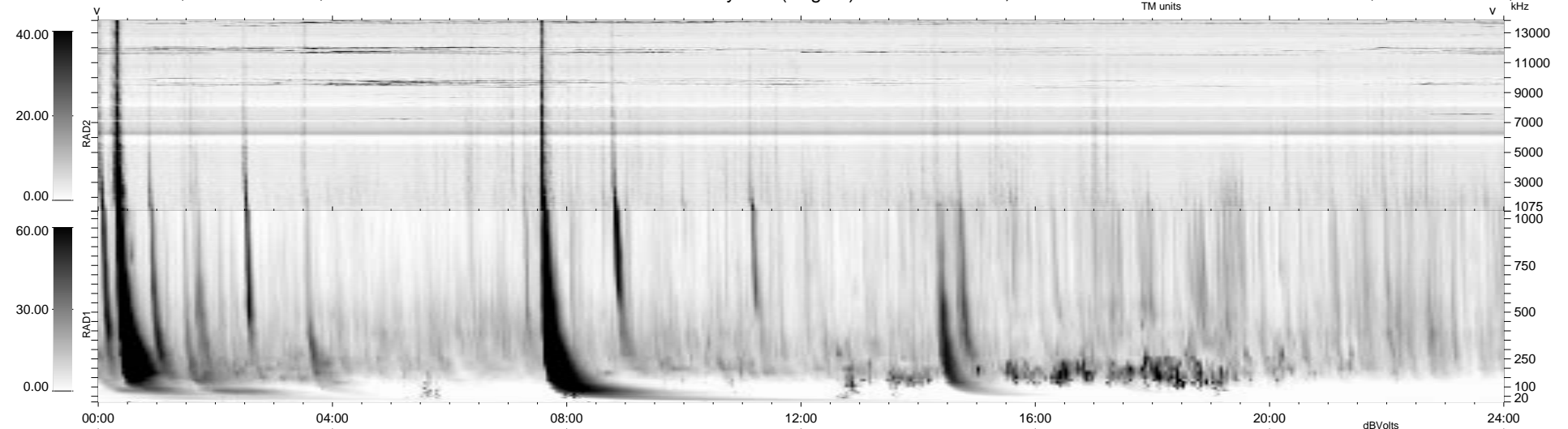
1.7d VMS-SunOS

LZ version = v01

WIND/WAVES Summary Plot (Page 1) for 30-JUN-2003, DOY = 181

DAILY Fri Sep 5, 2008

Re = 215.80 (204.53, -68.56, -6.17 GSE)



```

RAD2
Antenna Ey .....
Mode LIN(1) .....
SUM/SEP SEP .....
Toggle OFF .....

RAD1
Antenna Ex .....
Mode LIS(2,3) .....
SUM/SEP SUM .....
Toggle OFF .....

TNR
Antenna ExEy .....
Mode A-32 .....
Sweep ACE .....
  
```