

0 bad + 2 good MF/ZMF projected (100%) - 0 missing MFs
 Avg interval = 180 secs
 Re = - 240.41 (230.20, -69.20, 3.72 GSE)

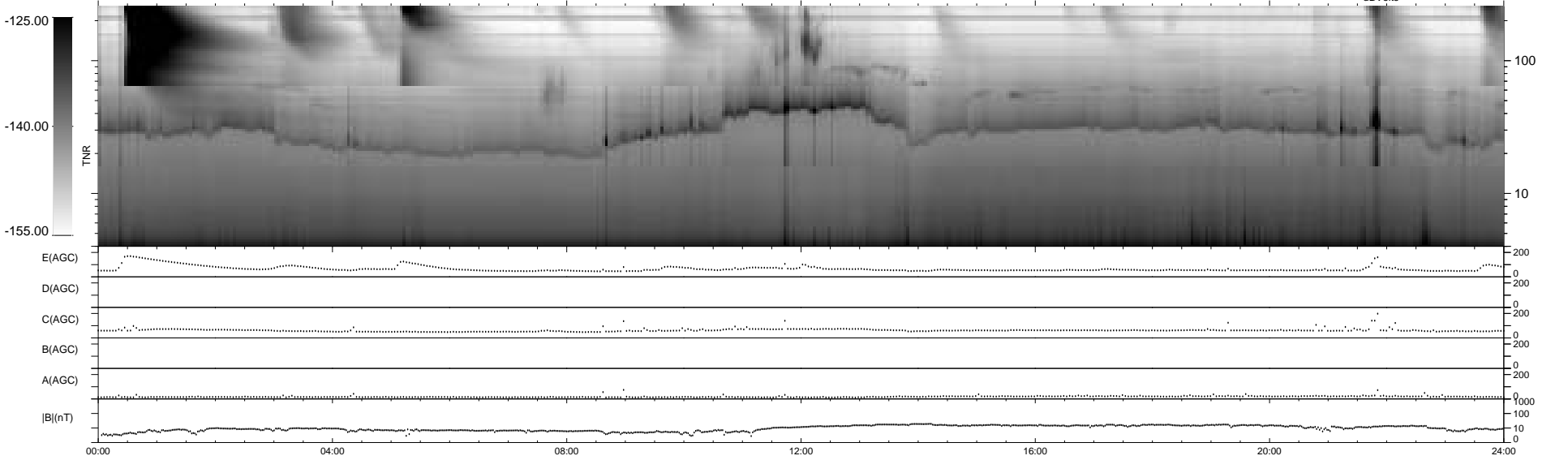
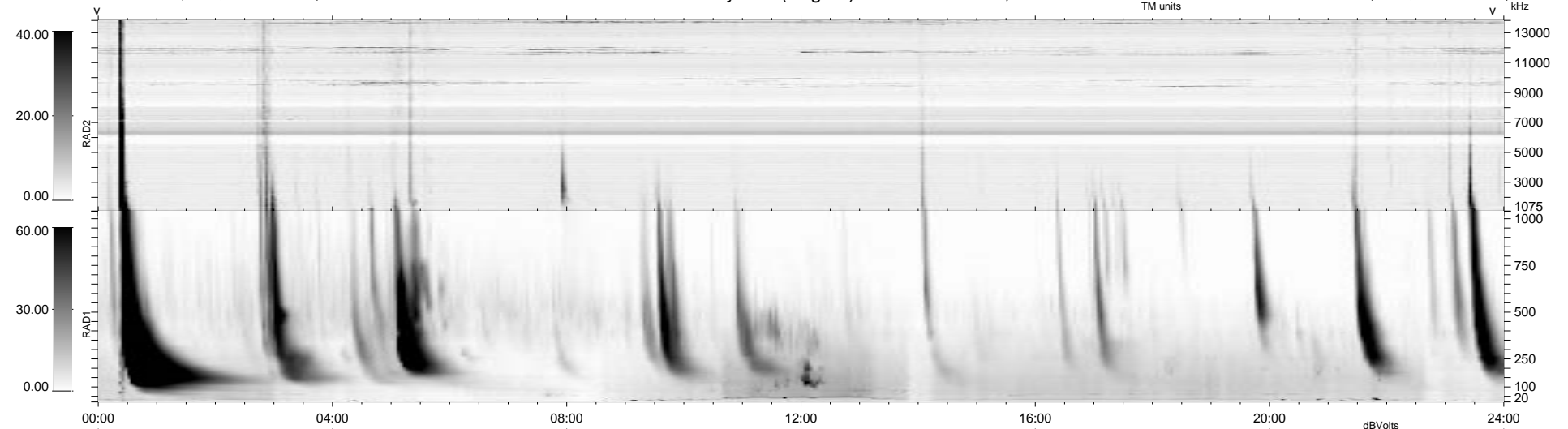
1.7d VMS-SunOS

LZ version = v02

WIND/WAVES Summary Plot (Page 1) for 14-JUN-2003, DOY = 165

DAILY Fri Sep 5, 2008

Re = 239.38 (228.81, -70.27, 3.12 GSE)



```

RAD2
Antenna Ey .....
Mode LIN(1) .....
SUM/SEP SEP .....
Toggle OFF .....

RAD1
Antenna Ex .....
Mode LIS(2,3) .....
SUM/SEP SUM .....
Toggle OFF .....

TNR
Antenna ExEy .....
Mode A-32 .....
Sweep ACE .....
  
```