

0 bad + 2 good MF/ZMF projected (100%) - 0 missing MFs  
Avg interval = 180 secs  
Re = -243.38 (234.34, -65.51, 5.44 GSE)

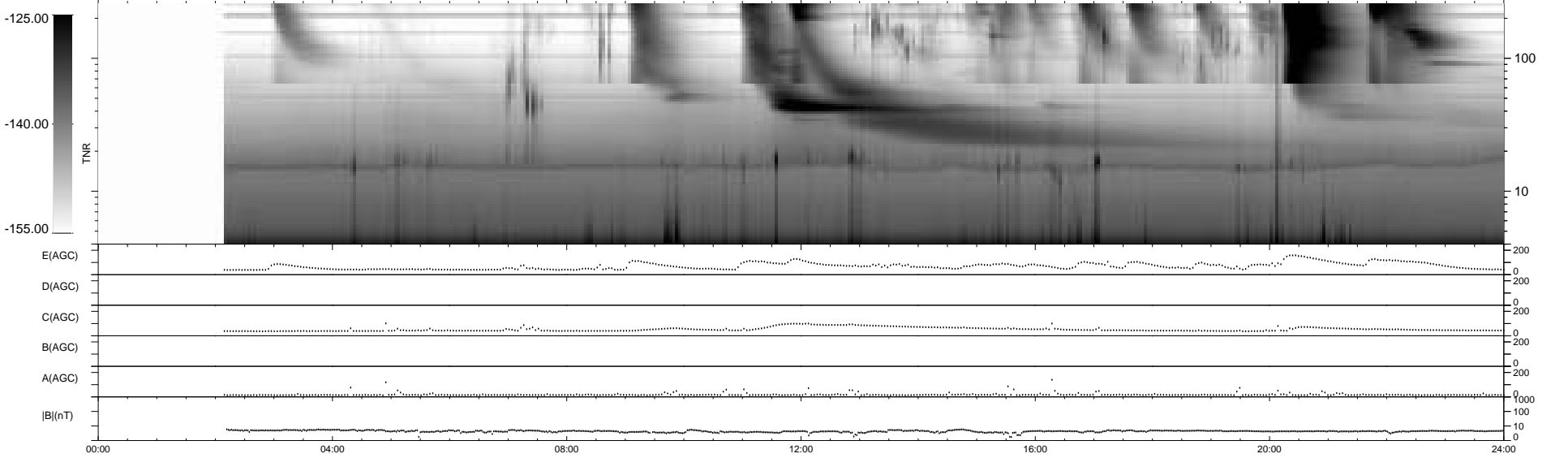
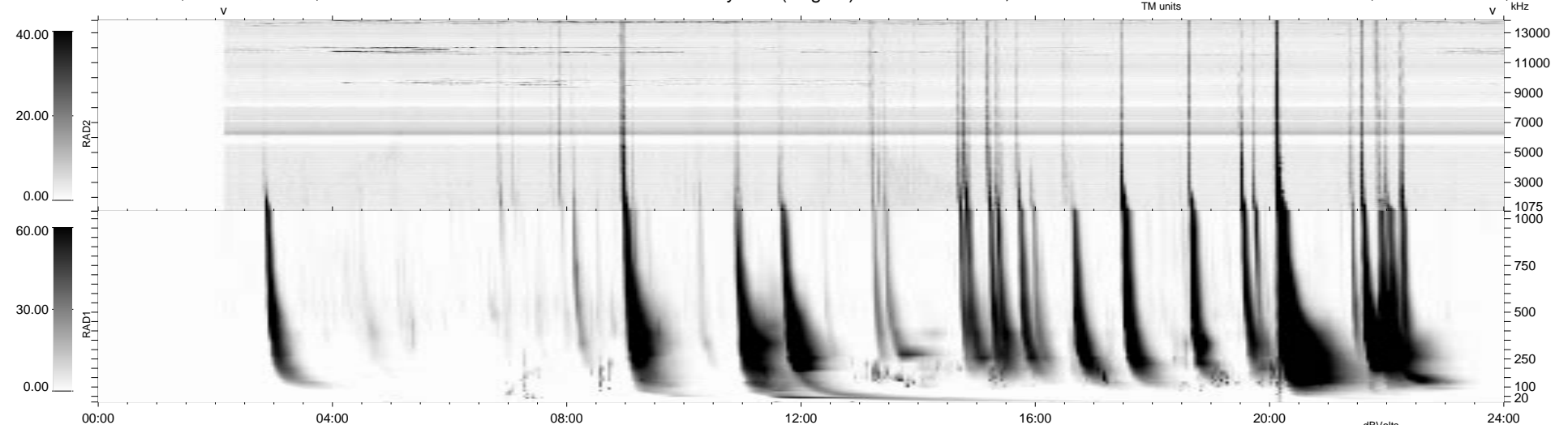
1.7d VMS-SunOS

LZ version = v01

### WIND/WAVES Summary Plot (Page 1) for 11-JUN-2003, DOY = 162

DAILY Fri Sep 5, 2008

Re = 242.47 (233.05, -66.73, 4.91 GSE)



RAD2 Antenna Mode SUM/SEP Toggle  
RAD1 Antenna Mode SUM/SEP Toggle  
TNR Antenna Mode Sweep