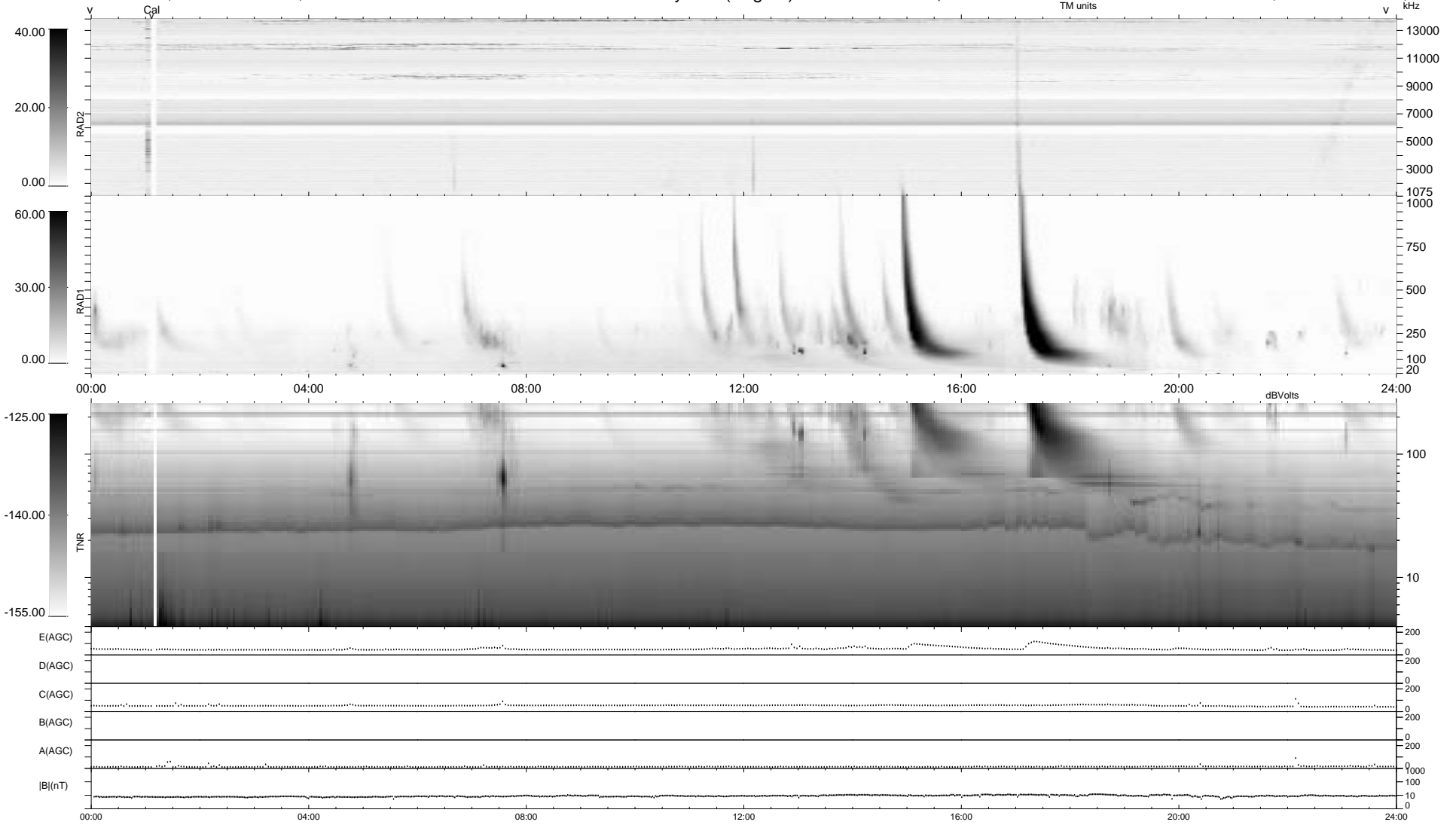


0 bad + 2 good MF/ZMF projected (100%) - 0 missing MFs
 Avg interval = 180 secs
 Re = -254.95 (252.72, -30.52, 14.17 GSE)

1.7d VMS-SunOS LZ version = v01
 DAILY Fri Sep 5, 2008
 Re = 254.76 (252.24, -33.02, 13.79 GSE)

WIND/WAVES Summary Plot (Page 1) for 24-MAY-2003, DOY = 144



```

RAD2
Antenna Ey .....
Mode LIN(1) .....
SUM/SEP SEP .....
Toggle OFF .....

RAD1
Antenna Ex .....
Mode LIS(2,3) .....
SUM/SEP SUM .....
Toggle OFF .....

TNR
Antenna ExEy .....
Mode A-32 .....
Sweep ACE .....
  
```