

0 bad + 2 good MF/ZMF projected (100%) - 0 missing MFs
 Avg interval = 180 secs
 Re = 257.64 (255.09, 31.02, 18.69 GSE)

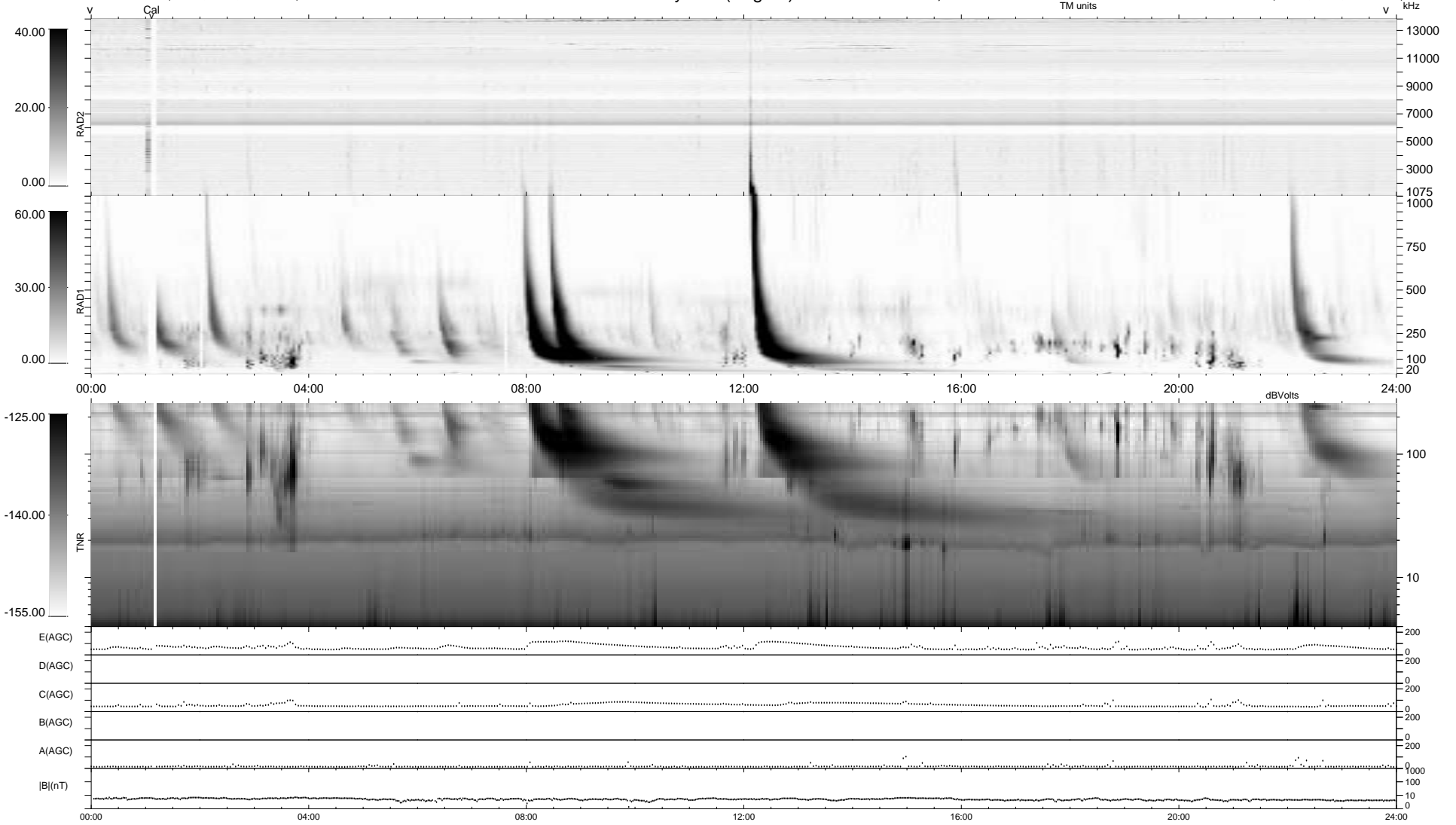
1.7d VMS-SunOS

LZ version = v01

WIND/WAVES Summary Plot (Page 1) for 02-MAY-2003, DOY = 122

DAILY Fri Sep 5, 2008

Re = 257.73 (255.47, 28.50, 18.68 GSE)



RAD2
 Antenna Ey
 Mode LIN(1)
 SUM/SEP SEP
 Toggle OFF

RAD1
 Antenna Ex
 Mode LIS(2,3)
 SUM/SEP SUM
 Toggle OFF

TNR
 Antenna ExEy
 Mode A-32
 Sweep ACE