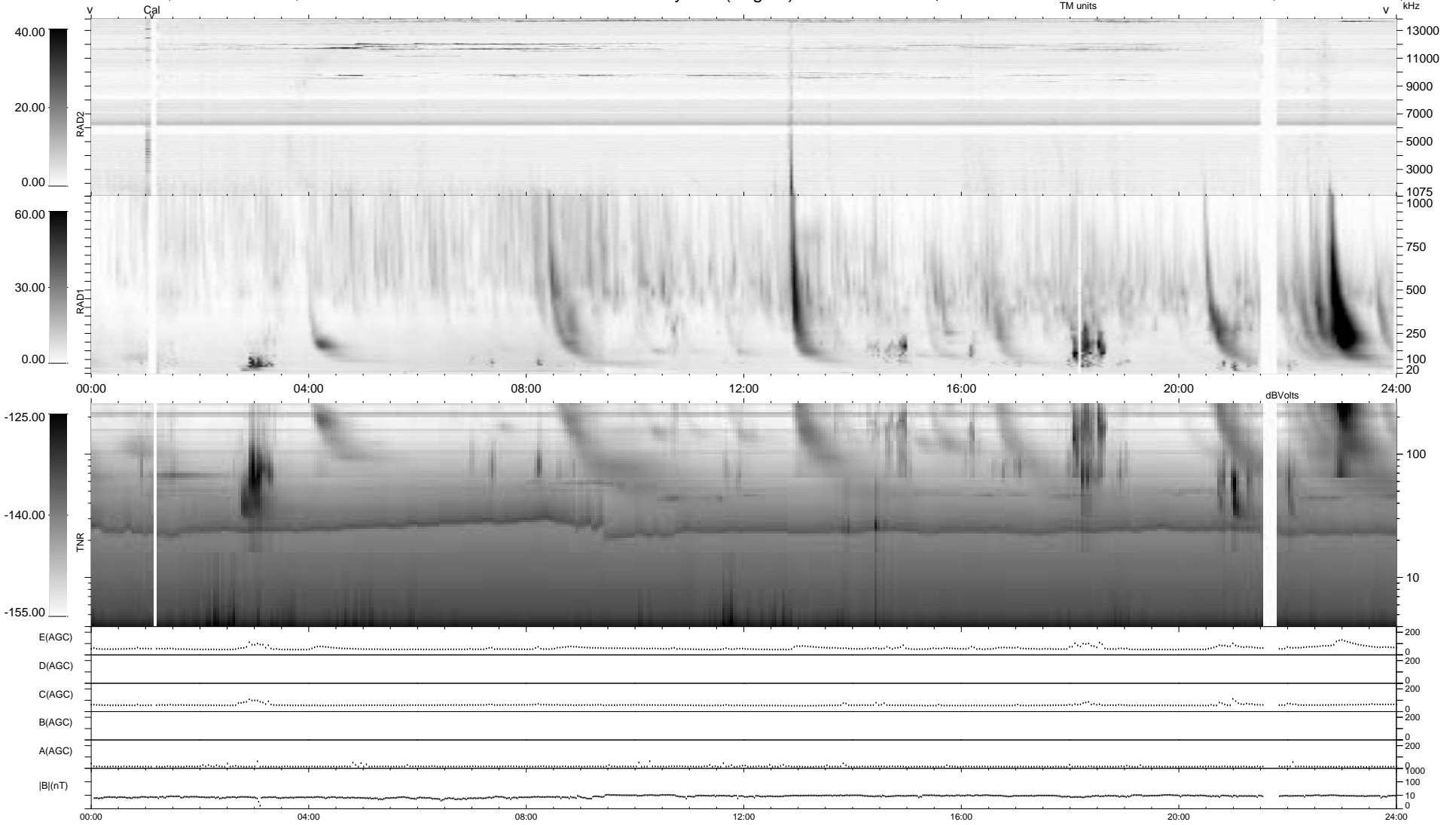


0 bad + 2 good MF/ZMF projected (100%) - 0 missing MFs
 Avg interval = 180 secs
 Re = -257.32 (254.10, 36.00, 18.64 GSE)

1.7d VMS-SunOS LZ version = v01
 DAILY Fri Sep 5, 2008
 Re = 257.50 (254.63, 33.55, 18.67 GSE)

WIND/WAVES Summary Plot (Page 1) for 30-APR-2003, DOY = 120



```

RAD2
Antenna Ey .....
Mode LIN(1) .....
SUM/SEP SEP .....
Toggle OFF .....

RAD1
Antenna Ex .....
Mode LIS(2,3) .....
SUM/SEP SUM .....
Toggle OFF .....

TNR
Antenna ExEy .....
Mode A-32 .....
Sweep ACE .....
  
```