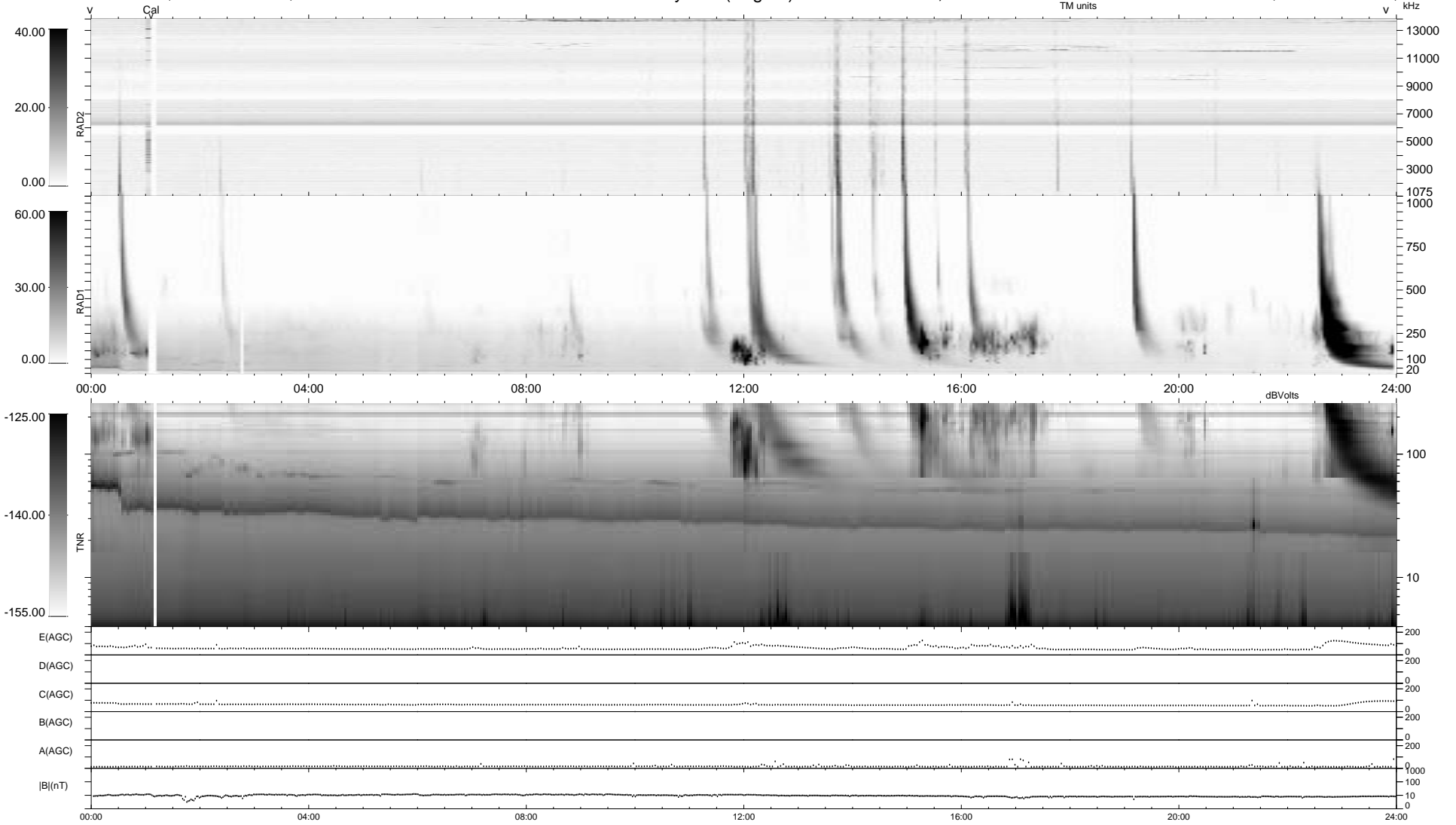


0 bad + 2 good MF/ZMF projected (100%) - 0 missing MFs  
 Avg interval = 180 secs  
 Re = -237.38 (222.29, 82.88, 7.89 GSE)

1.7d VMS-SunOS LZ version = v02  
 DAILY Fri Sep 5, 2008  
 Re = 238.54 (223.44, 83.08, 8.43 GSE)

### WIND/WAVES Summary Plot (Page 1) for 27-MAR-2003, DOY = 86



RAD2  
 Antenna Ey .....  
 Mode LIN(1) .....  
 SUM/SEP SEP .....  
 Toggle OFF .....  
 RAD1  
 Antenna Ex .....  
 Mode LIS(2,3) .....  
 SUM/SEP SUM .....  
 Toggle OFF .....  
 TNR  
 Antenna ExEy .....  
 Mode A-32 .....  
 Sweep ACE .....