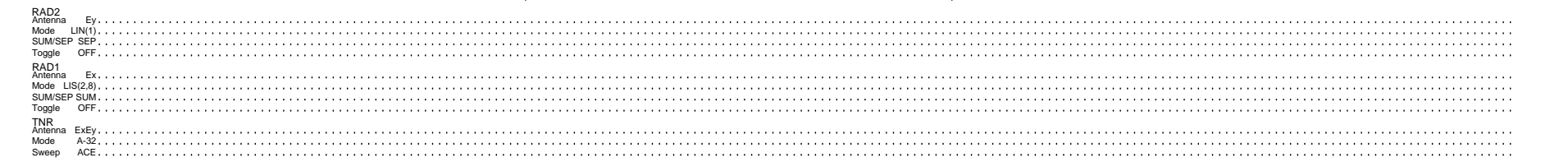
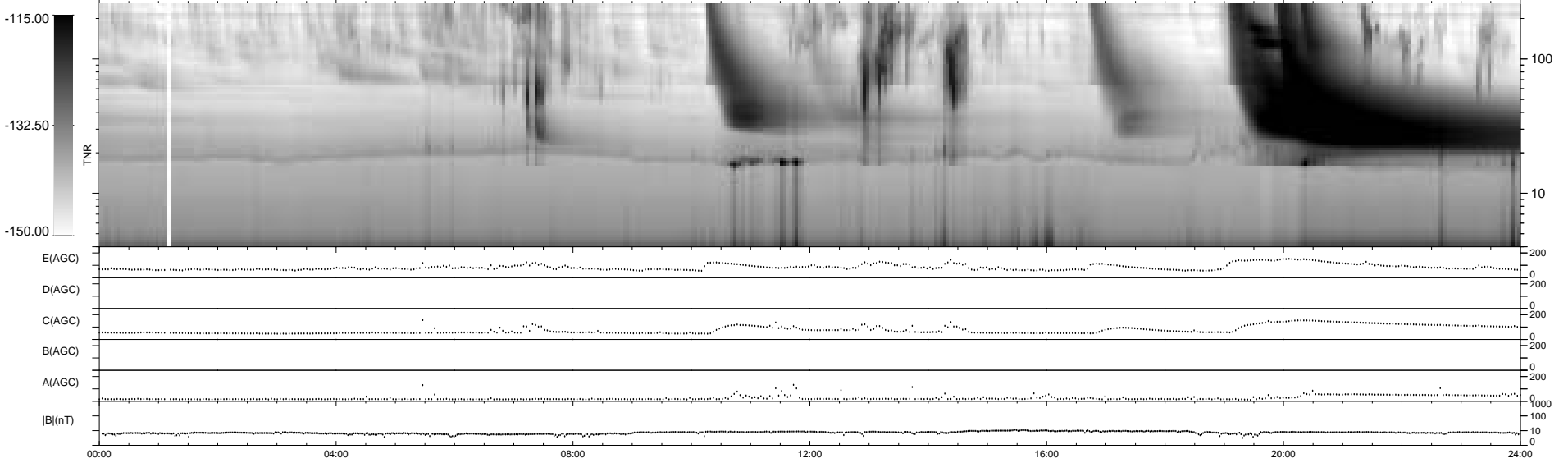
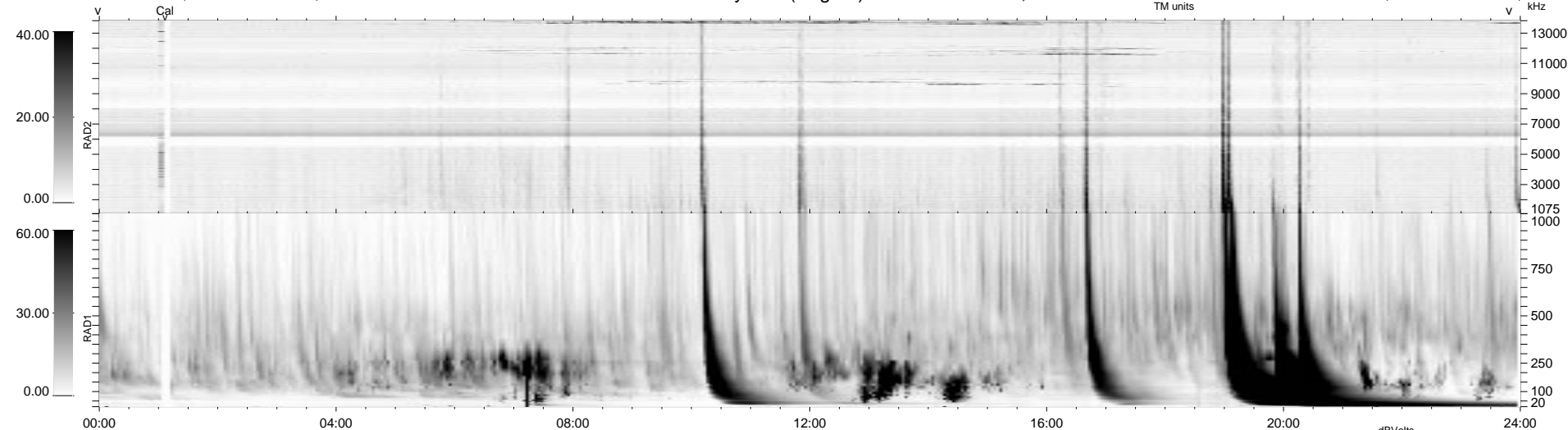


0 bad + 2 good MF/ZMF projected (100%) - 0 missing MFs
 Avg interval = 180 secs
 Re = -225.52 (212.08, 76.65, 2.11 GSE)

1.7d VMS-SunOS LZ version = v02
 DAILY Fri Sep 5, 2008
 Re = 226.63 (212.88, 77.68, 2.72 GSE)

WIND/WAVES Summary Plot (Page 1) for 17-MAR-2003, DOY = 76



RAD2
 Antenna Ey
 Mode LIN(1)
 SUM/SEP SEP
 Toggle OFF

RAD1
 Antenna Ex
 Mode LIS(2,3)
 SUM/SEP SUM
 Toggle OFF

TNR
 Antenna ExEy
 Mode A-32
 Sweep ACE