

0 bad + 2 good MF/ZMF projected (100%) - 0 missing MFs
 Avg interval = 180 secs
 Re = - 219.02 (208.22, 67.88, -1.65 GSE)

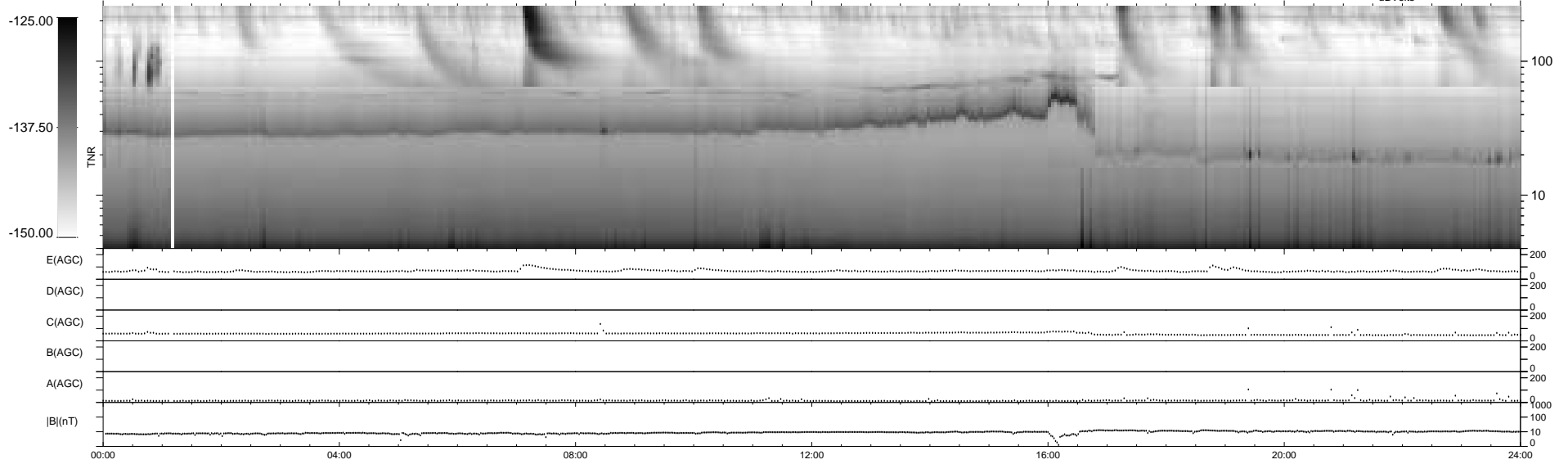
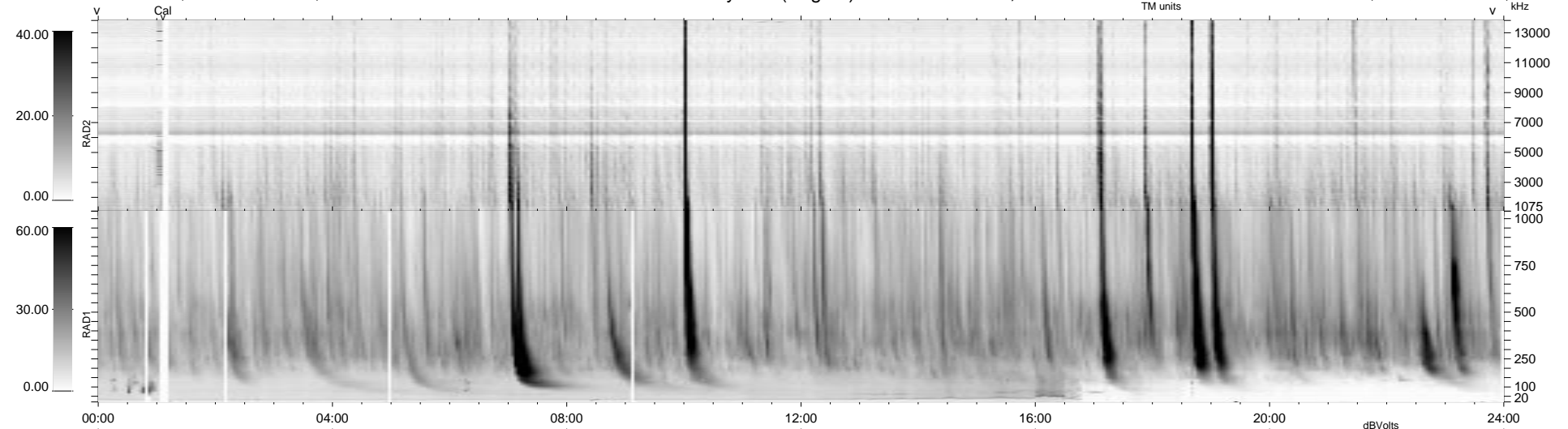
1.7d VMS-SunOS

LZ version = v02

WIND/WAVES Summary Plot (Page 1) for 11-MAR-2003, DOY = 70

DAILY Fri Sep 5, 2008

Re = 220.09 (208.77, 69.66, -1.02 GSE)



```

RAD2
Antenna Ey .....
Mode LIN(1) .....
SUM/SEP SEP .....
Toggle OFF .....

RAD1
Antenna Ex .....
Mode LIS(2,3) .....
SUM/SEP SUM .....
Toggle OFF .....

TNR
Antenna ExEy .....
Mode A-32 .....
Sweep ACE .....
  
```