

0 bad + 2 good MF/ZMF projected (100%) - 0 missing MFs  
 Avg interval = 180 secs  
 Re = 215.74 (206.67, 61.78, -3.53 GSE)

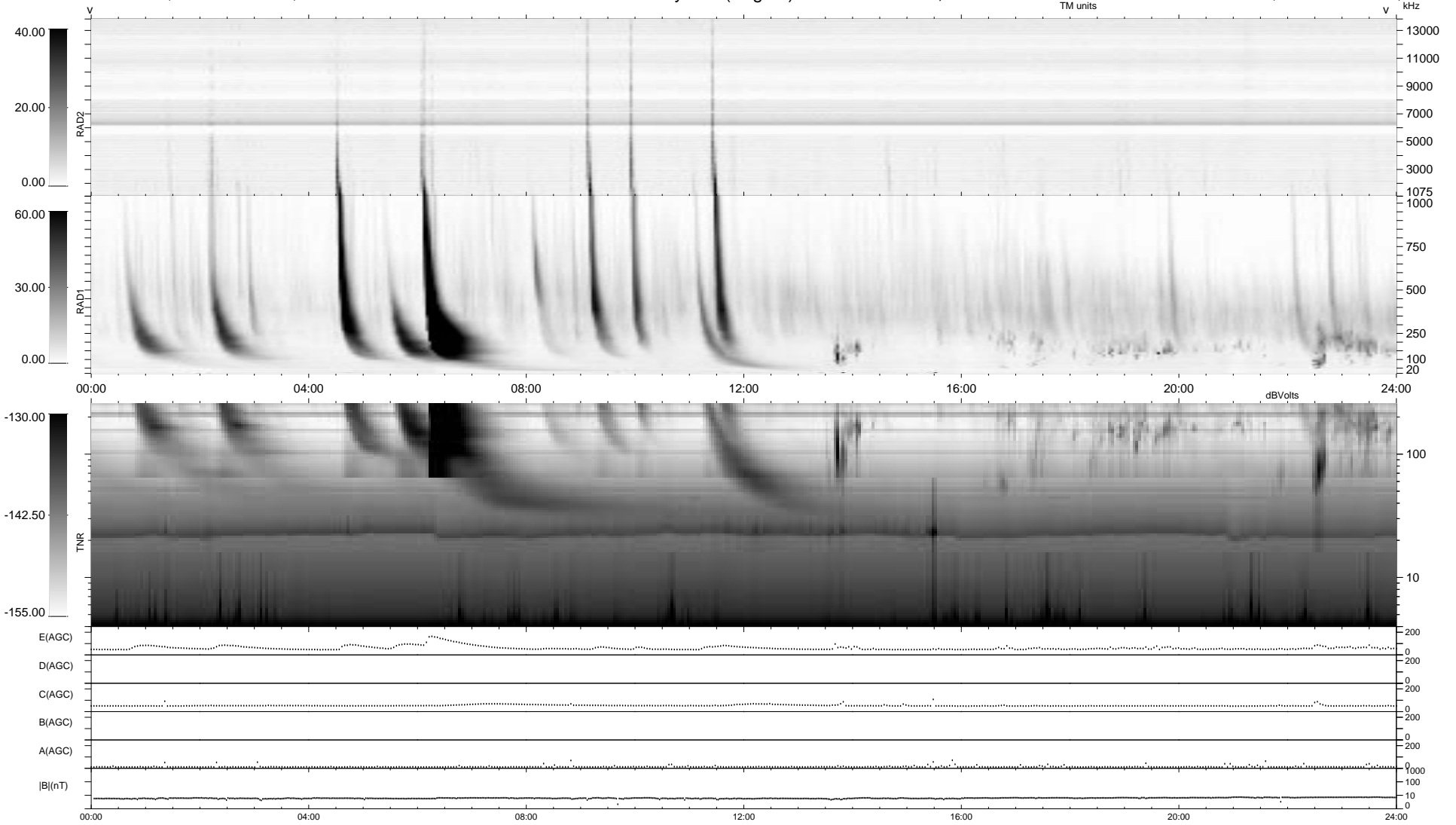
1.7d VMS-SunOS

LZ version = v01

### WIND/WAVES Summary Plot (Page 1) for 08-MAR-2003, DOY = 67

DAILY Fri Sep 5, 2008

Re = 216.83 (207.17, 63.92, -2.91 GSE)



```

RAD2
Antenna Ey .....
Mode LIN(1) .....
SUM/SEP SEP .....
Toggle OFF .....

RAD1
Antenna Ex .....
Mode LIS(2,3) .....
SUM/SEP SUM .....
Toggle OFF .....

TNR
Antenna ExEy .....
Mode A-32 .....
Sweep ACE .....
  
```