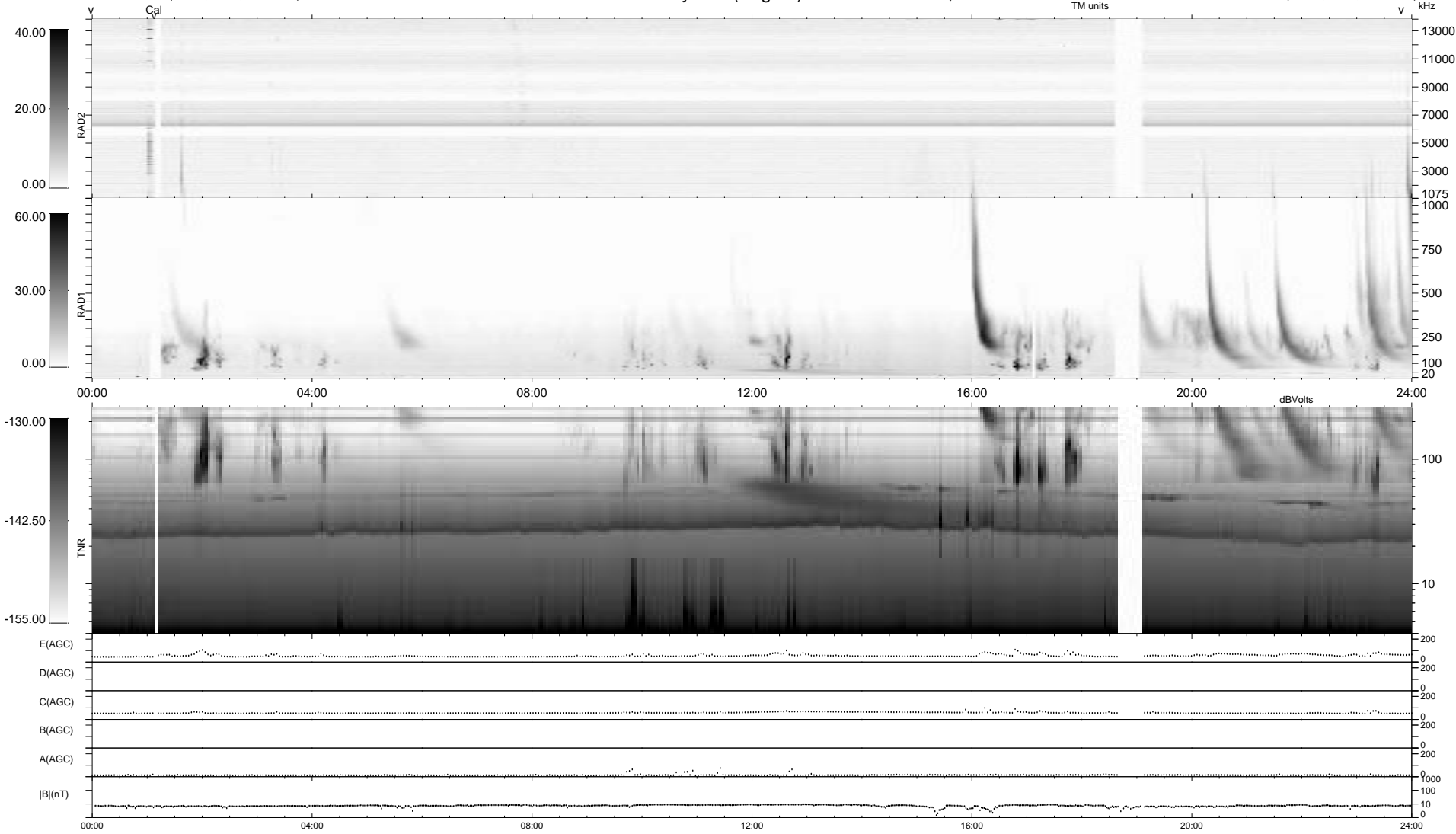


0 bad + 2 good MF/ZMF projected (100%) - 0 missing MFs
 Avg interval = 180 secs
 Re = 212.39 (205.17, 54.65, -5.35 GSE)

1.7d VMS-SunOS LZ version = v02
 DAILY Fri Sep 5, 2008
 Re = 213.50 (205.67, 57.11, -4.75 GSE)

WIND/WAVES Summary Plot (Page 1) for 05-MAR-2003, DOY = 64



```

RAD2
Antenna Ey .....
Mode LIN(1) .....
SUM/SEP SEP .....
Toggle OFF .....

RAD1
Antenna Ex .....
Mode LIS(2,3) .....
SUM/SEP SUM .....
Toggle OFF .....

TNR
Antenna ExEy .....
Mode A-32 .....
Sweep ACE .....
  
```