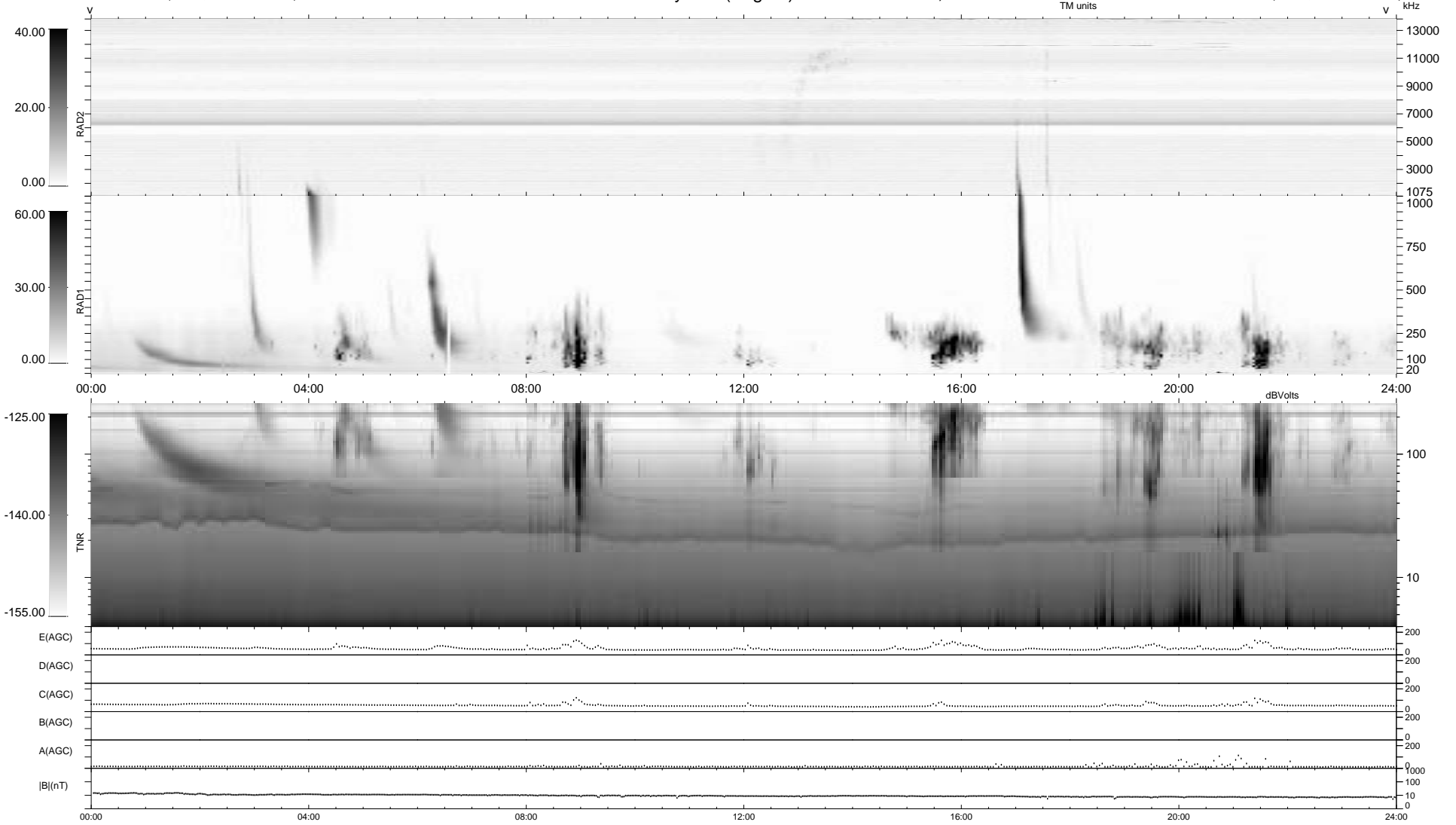


0 bad + 2 good MF/ZMF projected (100%) - 0 missing MFs  
 Avg interval = 180 secs  
 Re = - 211.26 (204.66, 52.07, -5.93 GSE)

1.7d VMS-SunOS LZ version = v01  
 DAILY Fri Sep 5, 2008  
 Re = 212.38 (205.16, 54.63, -5.35 GSE)

### WIND/WAVES Summary Plot (Page 1) for 04-MAR-2003, DOY = 63



```

RAD2
Antenna Ey .....
Mode LIN(1) .....
SUM/SEP SEP .....
Toggle OFF .....

RAD1
Antenna Ex .....
Mode LIS(2,3) .....
SUM/SEP SUM .....
Toggle OFF .....

TNR
Antenna ExEy .....
Mode A-32 .....
Sweep ACE .....
  
```