

0 bad + 2 good MF/ZMF projected (100%) - 0 missing MFs
 Avg interval = 180 secs
 Re = 207.87 (203.05, 43.84, -7.62 GSE)

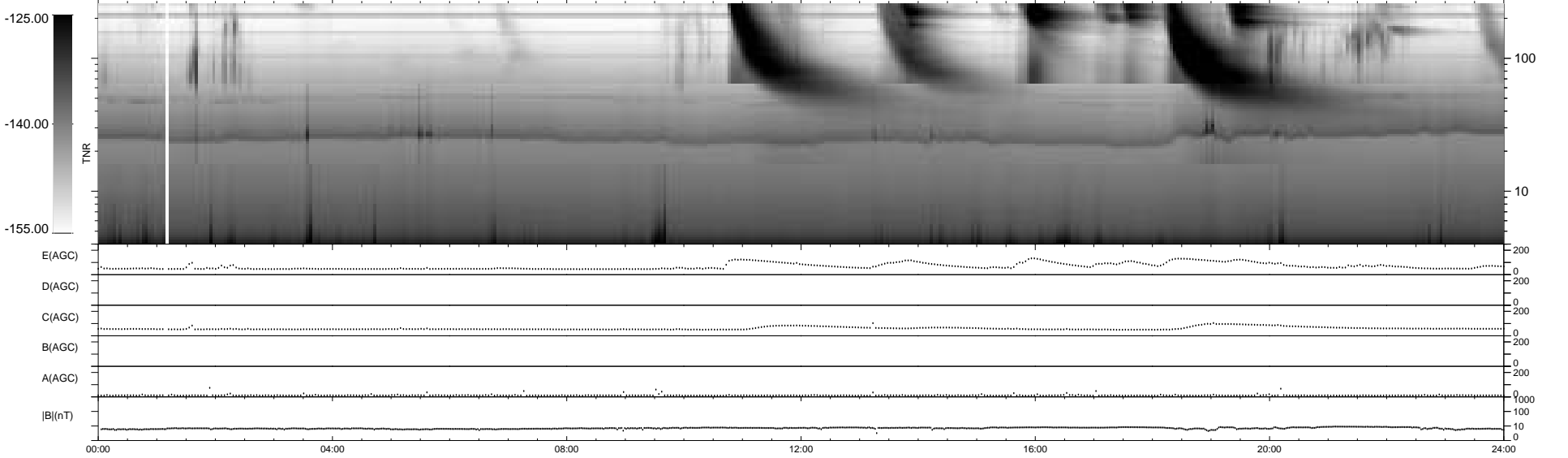
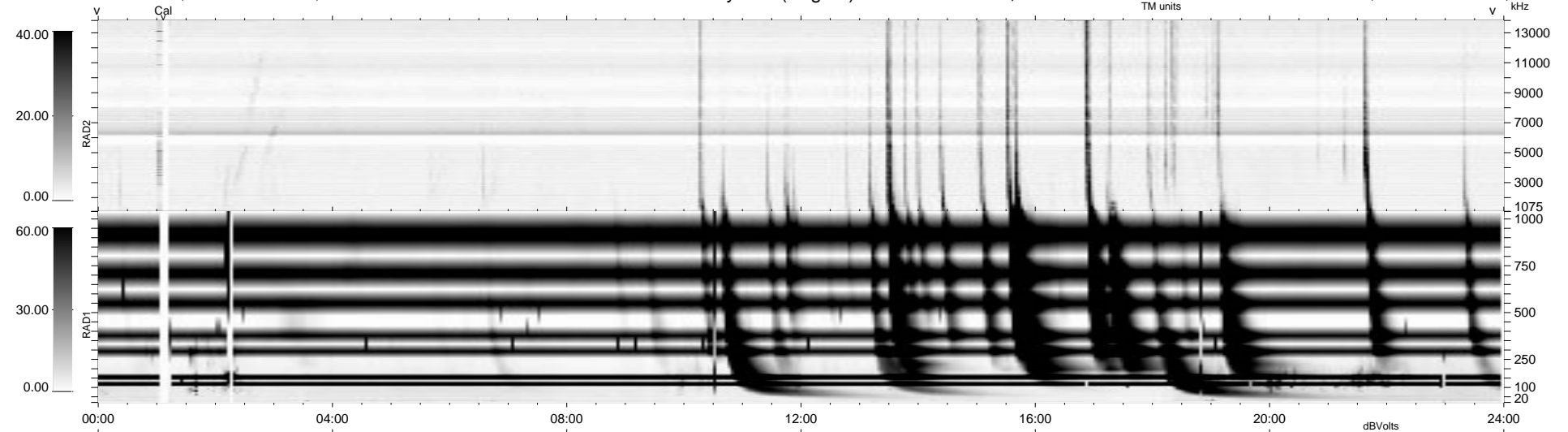
1.7d VMS-SunOS

LZ version = v01

WIND/WAVES Summary Plot (Page 1) for 01-MAR-2003, DOY = 60

DAILY Fri Sep 5, 2008

Re = 208.99 (203.60, 46.64, -7.08 GSE)



```

RAD2
Antenna Ey .....
Mode LIN(1) .....
SUM/SEP SEP .....
Toggle OFF .....

RAD1
Antenna Ex .....
Mode LIS(2,4) .....
SUM/SEP SUM .....
Toggle OFF .....

TNR
Antenna ExEy .....
Mode A-32 .....
Sweep ACE .....
  
```