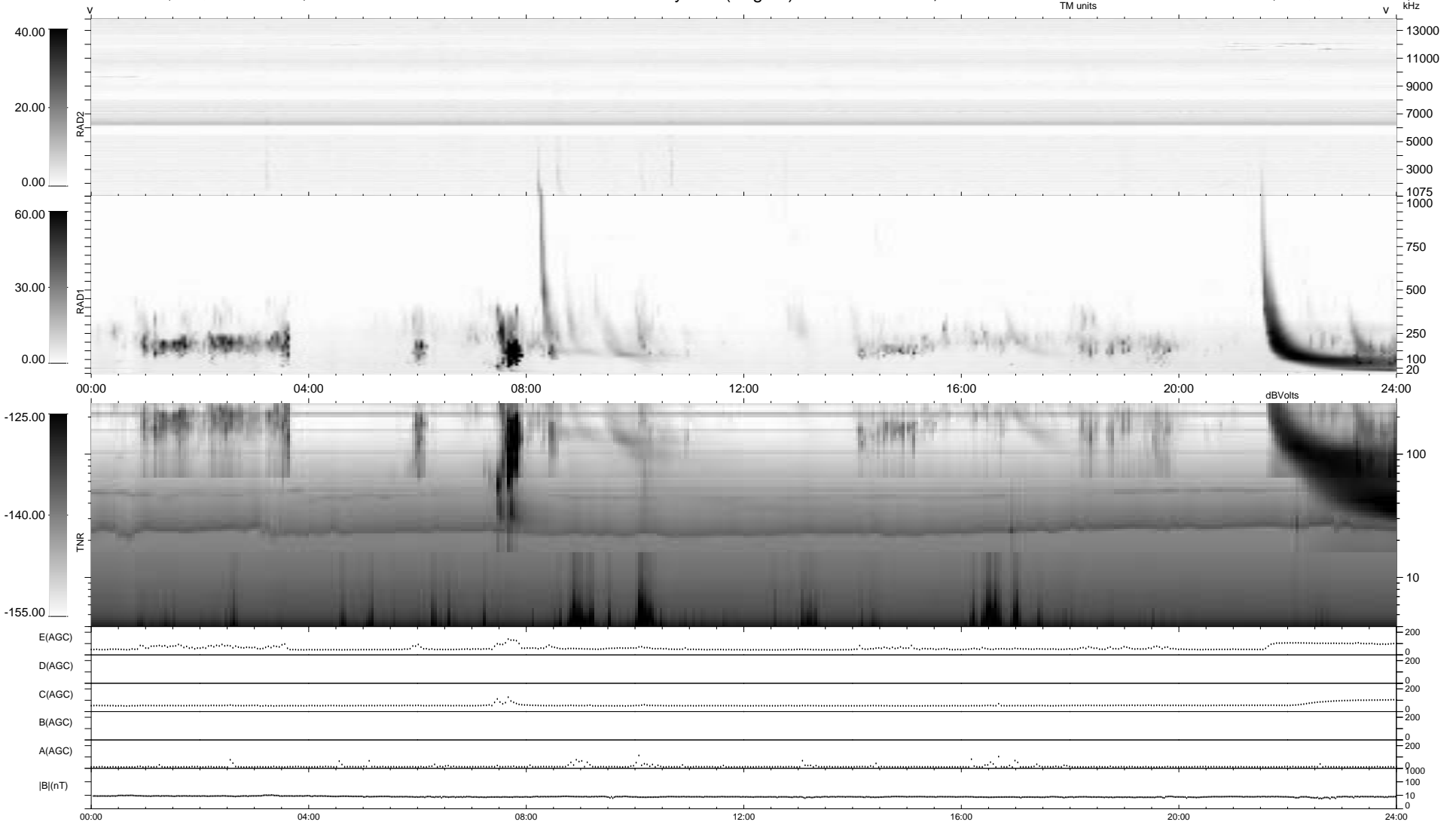


0 bad + 2 good MF/ZMF projected (100%) - 0 missing MFs  
 Avg interval = 180 secs  
 Re = 196.21 (195.08, -15.16, -14.63 GSE)

1.7d VMS-SunOS LZ version = v02  
 DAILY Thu Sep 4, 2008  
 Re = 196.17 (195.28, -11.88, -14.46 GSE)

### WIND/WAVES Summary Plot (Page 1) for 10-FEB-2003, DOY = 41



```

RAD2
Antenna Ey .....
Mode LIN(1) .....
SUM/SEP SEP .....
Toggle OFF .....

RAD1
Antenna Ex .....
Mode LIS(2,3) .....
SUM/SEP SUM .....
Toggle OFF .....

TNR
Antenna ExEy .....
Mode A-32 .....
Sweep ACE .....
  
```