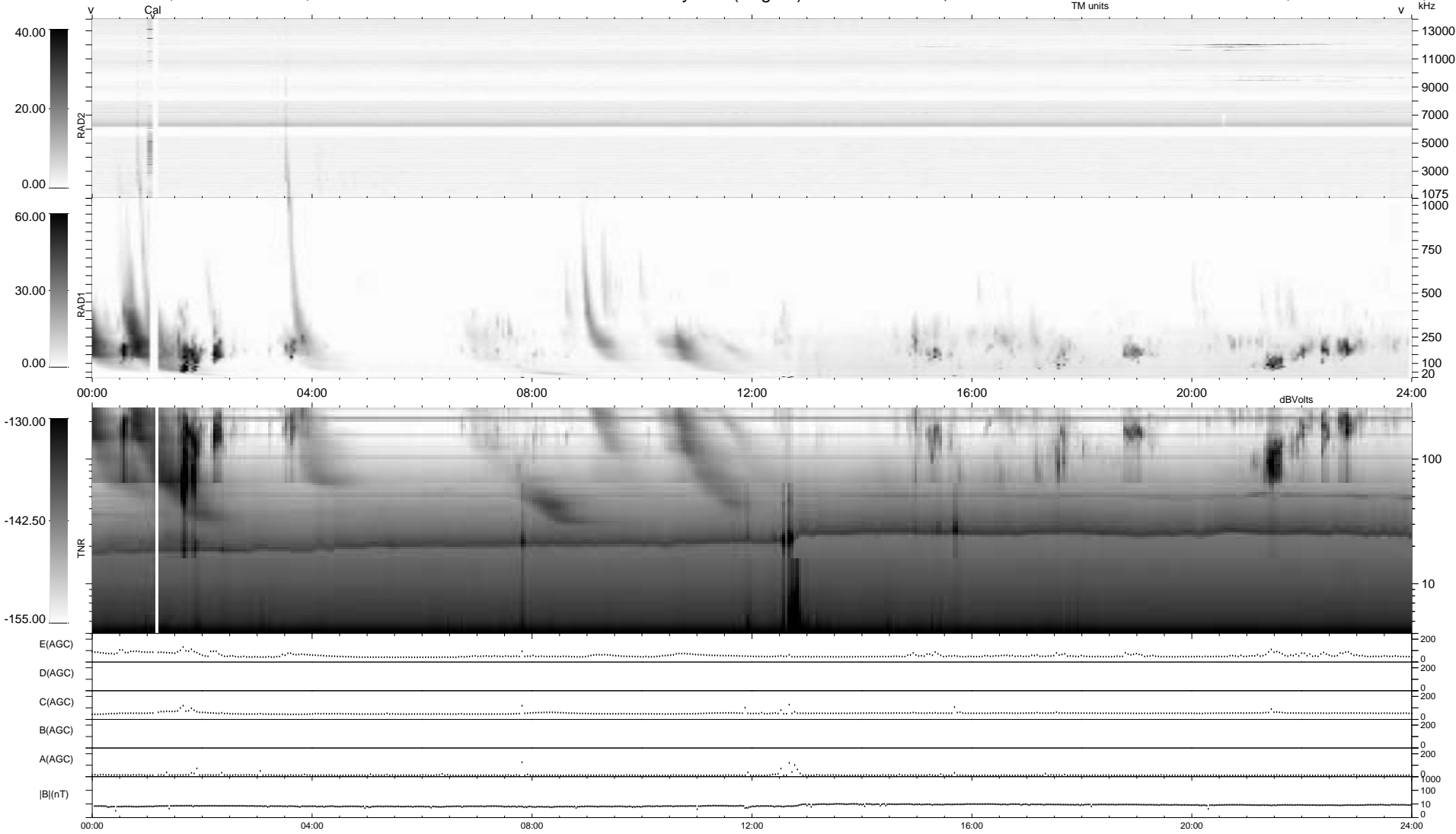


0 bad + 2 good MF/ZMF projected (100%) - 0 missing MFs
 Avg interval = 180 secs
 Re = 196.31 (194.88, -18.48, -14.78 GSE)

1.7d VMS-SunOS LZ version = v02
 DAILY Thu Sep 4, 2008
 Re = 196.21 (195.08, -15.18, -14.64 GSE)

WIND/WAVES Summary Plot (Page 1) for 09-FEB-2003, DOY = 40



```

RAD2
Antenna  Ey .....
Mode     LIN(1) .....
SUM/SEP  SEP .....
Toggle   OFF .....

RAD1
Antenna  Ex .....
Mode     LIS(2,3) .....
SUM/SEP  SUM .....
Toggle   OFF .....

TNR
Antenna  ExEy .....
Mode     A-32 .....
Sweep    ACE .....
  
```