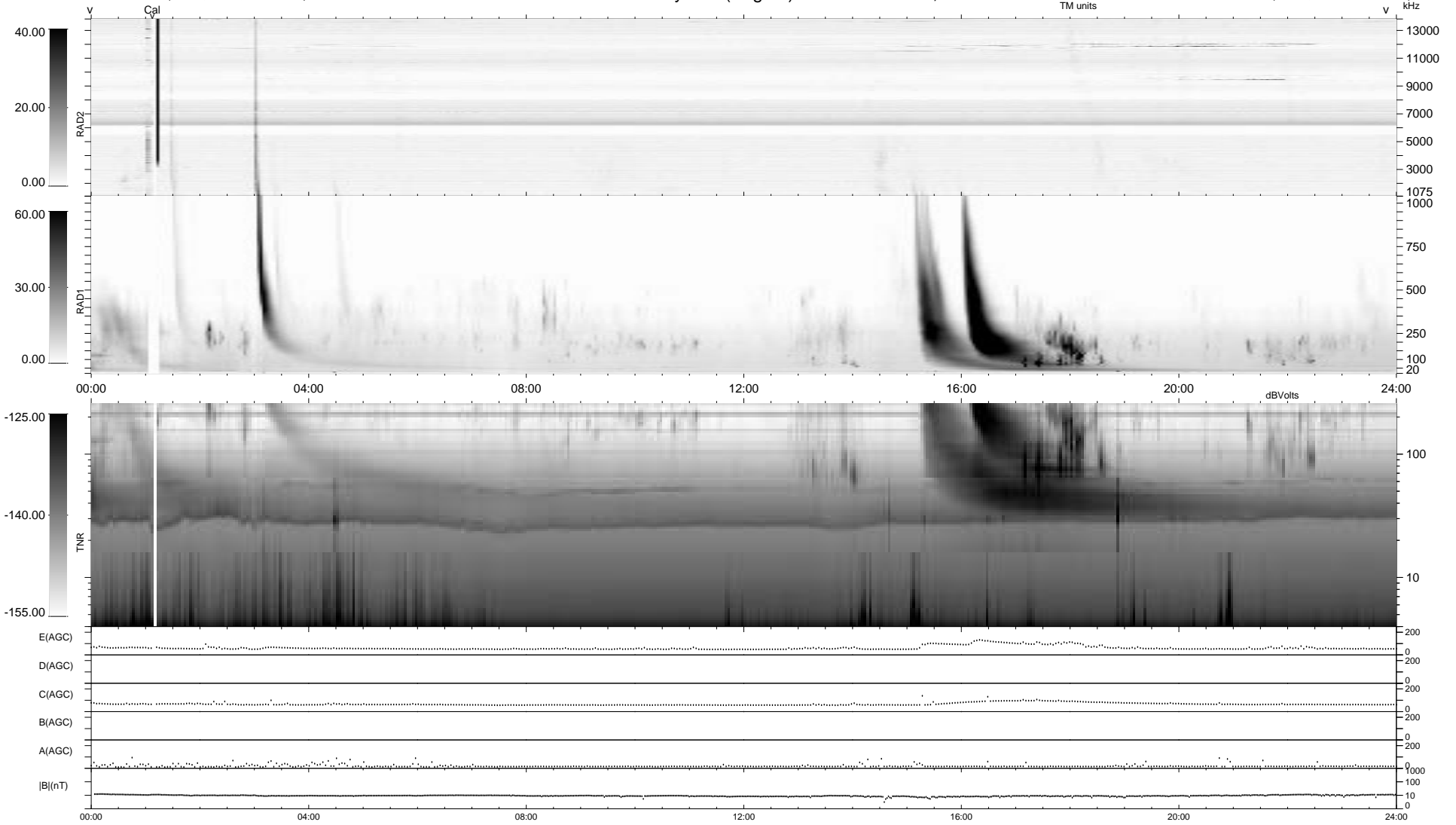


0 bad + 2 good MF/ZMF projected (100%) - 0 missing MFs
 Avg interval = 180 secs
 Re = - 197.83 (193.48, -38.39, -15.07 GSE)

1.7d VMS-SunOS LZ version = v02
 DAILY Thu Sep 4, 2008
 Re = 197.50 (193.76, -35.13, -15.10 GSE)

WIND/WAVES Summary Plot (Page 1) for 03-FEB-2003, DOY = 34



```

RAD2
Antenna Ey .....
Mode LIN(1) .....
SUM/SEP SEP .....
Toggle OFF .....

RAD1
Antenna Ex .....
Mode LIS(2,3) .....
SUM/SEP SUM .....
Toggle OFF .....

TNR
Antenna ExEy .....
Mode A-32 .....
Sweep ACE .....
  
```