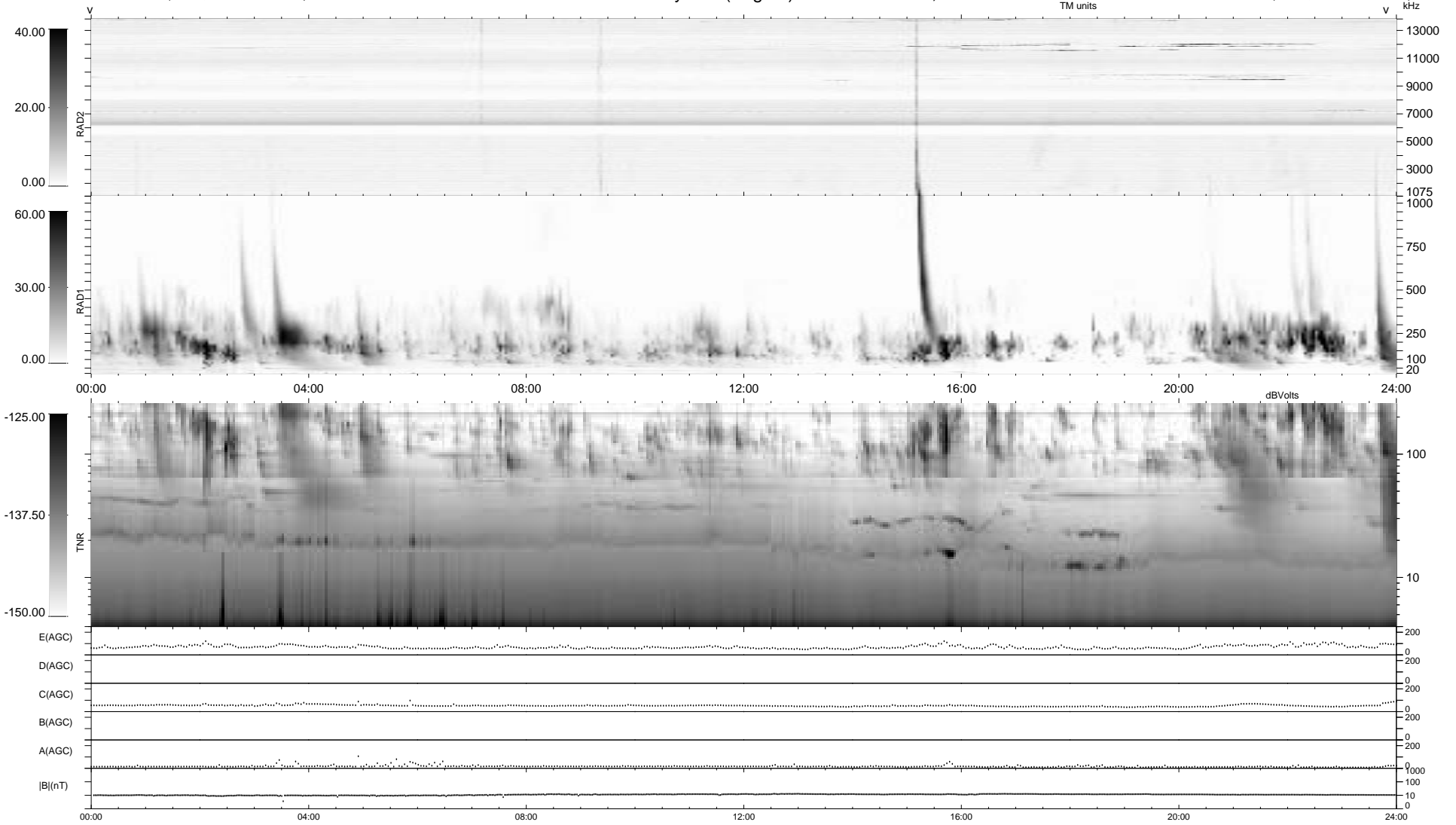


0 bad + 2 good MF/ZMF projected (100%) - 0 missing MFs
 Avg interval = 180 secs
 Re = 198.87 (192.44, -47.94, -14.80 GSE)

1.7d VMS-SunOS LZ version = v01
 DAILY Thu Sep 4, 2008
 Re = 198.52 (192.82, -44.84, -14.92 GSE)

WIND/WAVES Summary Plot (Page 1) for 31-JAN-2003, DOY = 31



```

RAD2
Antenna Ey .....
Mode LIN(1) .....
SUM/SEP SEP .....
Toggle OFF .....

RAD1
Antenna Ex .....
Mode LIS(2,3) .....
SUM/SEP SUM .....
Toggle OFF .....

TNR
Antenna ExEy .....
Mode A-32 .....
Sweep ACE .....
  
```