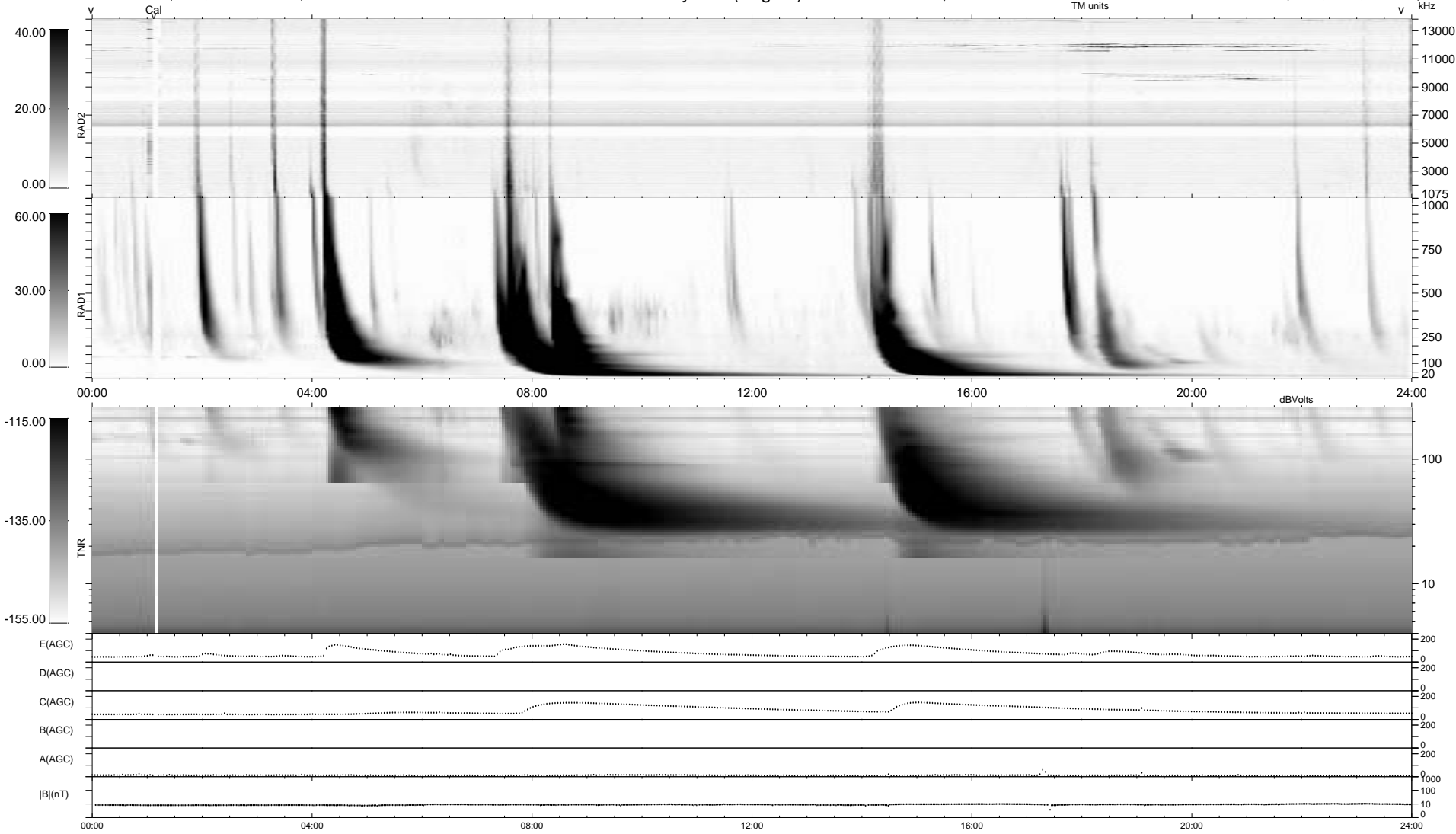


0 bad + 2 good MF/ZMF projected (100%) - 0 missing MFs  
 Avg interval = 180 secs  
 Re = -204.38 (183.94, -88.71, -8.23 GSE)

1.7d VMS-SunOS LZ version = v01  
 DAILY Thu Sep 4, 2008  
 Re = 204.20 (184.33, -87.42, -8.73 GSE)

### WIND/WAVES Summary Plot (Page 1) for 12-JAN-2003, DOY = 12



RAD2  
 Antenna Ey .....  
 Mode LIN(1) .....  
 SUM/SEP SEP .....  
 Toggle OFF .....  
 RAD1  
 Antenna Ex .....  
 Mode LIS(2,3) .....  
 SUM/SEP SUM .....  
 Toggle OFF .....  
 TNR  
 Antenna ExEy .....  
 Mode A-32 .....  
 Sweep ACE .....