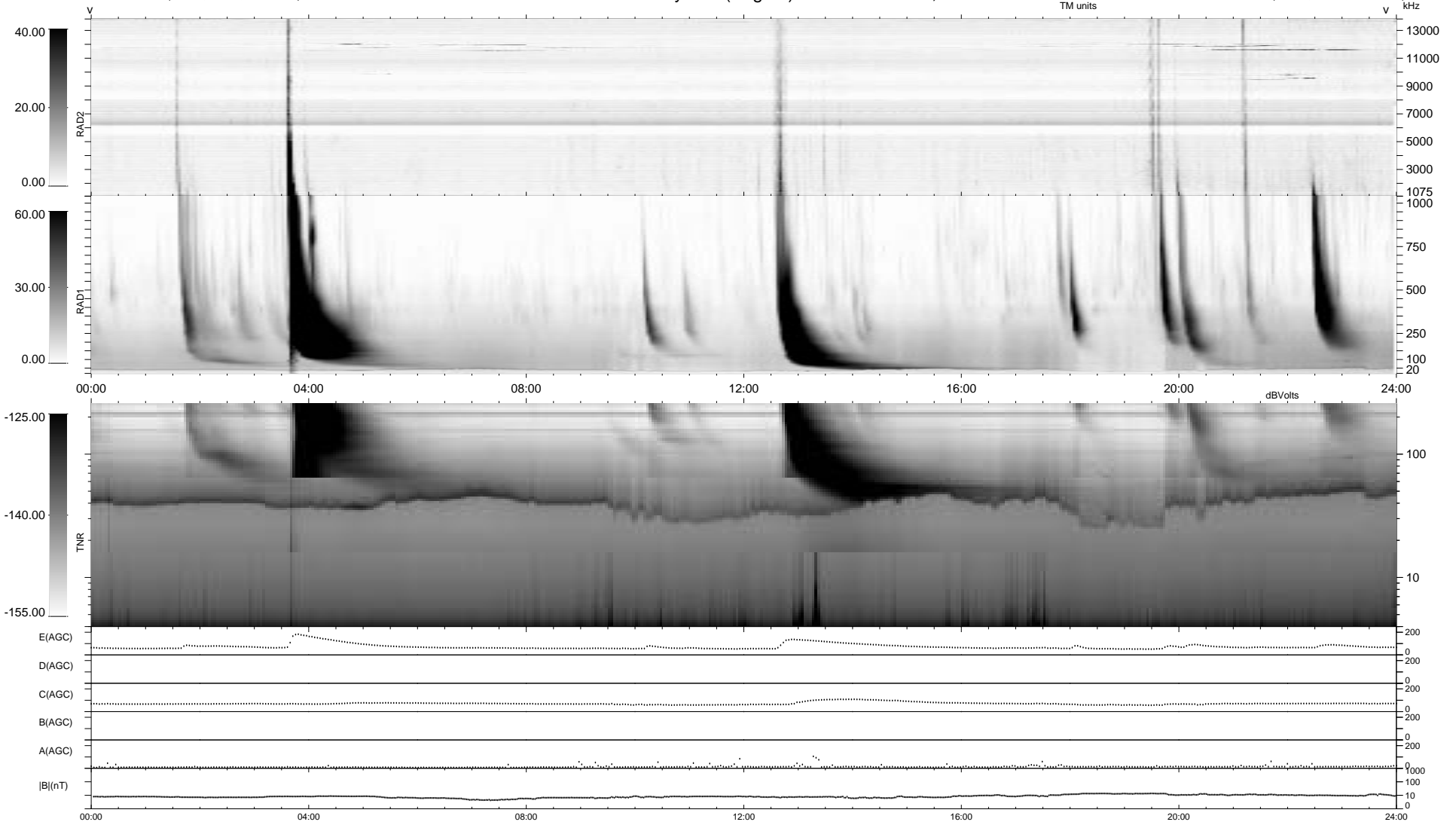


0 bad + 2 good MF/ZMF projected (100%) - 0 missing MFs  
 Avg interval = 180 secs  
 Re = -204.68 (182.62, -92.18, -6.62 GSE)

1.7d VMS-SunOS LZ version = v01  
 DAILY Thu Sep 4, 2008  
 Re = 204.64 (183.10, -91.11, -7.17 GSE)

WIND/WAVES Summary Plot (Page 1) for 09-JAN-2003, DOY = 9



```

RAD2
Antenna Ey .....
Mode LIN(1) .....
SUM/SEP SEP .....
Toggle OFF .....

RAD1
Antenna Ex .....
Mode LIS(2,3) .....
SUM/SEP SUM .....
Toggle OFF .....

TNR
Antenna ExEy .....
Mode A-32 .....
Sweep ACE .....
  
```