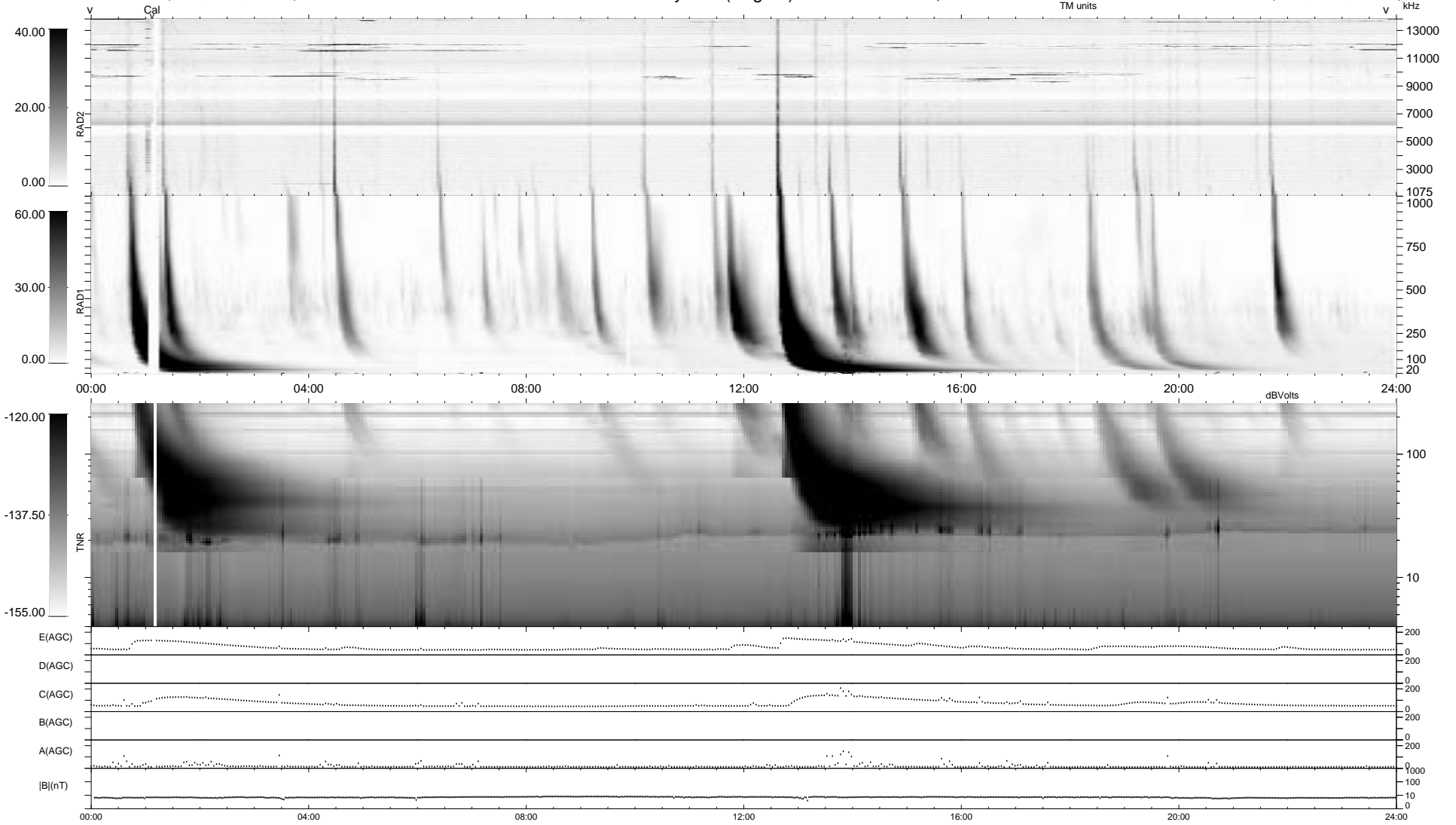


0 bad + 2 good MF/ZMF projected (100%) - 0 missing MFs
 Avg interval = 180 secs
 Re = 149.75 (125.65, -81.34, 4.43 GSE)

1.7d VMS-SunOS LZ version = v01
 DAILY Tue Sep 9, 2008
 Re = 154.40 (130.12, -83.01, 4.23 GSE)

WIND/WAVES Summary Plot (Page 1) for 12-DEC-2002, DOY = 346



RAD2
 Antenna Ey
 Mode LIN(1)
 SUM/SEP SEP
 Toggle OFF
 RAD1
 Antenna Ex
 Mode LIS(2,3)
 SUM/SEP SUM
 Toggle OFF
 TNR
 Antenna ExEy
 Mode A-32
 Sweep ACE