

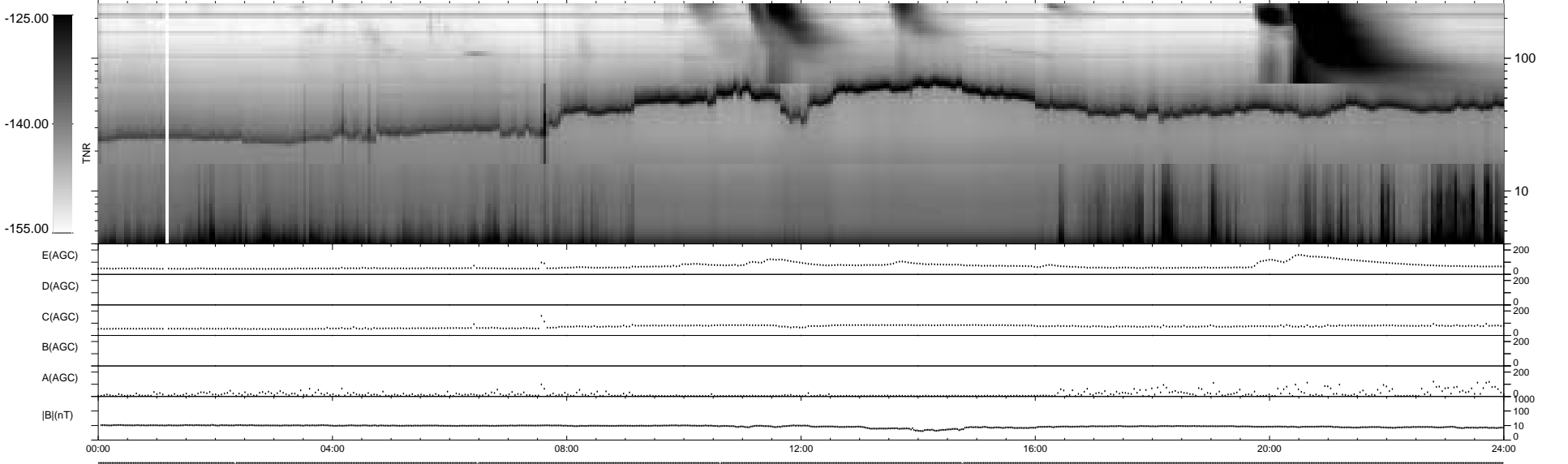
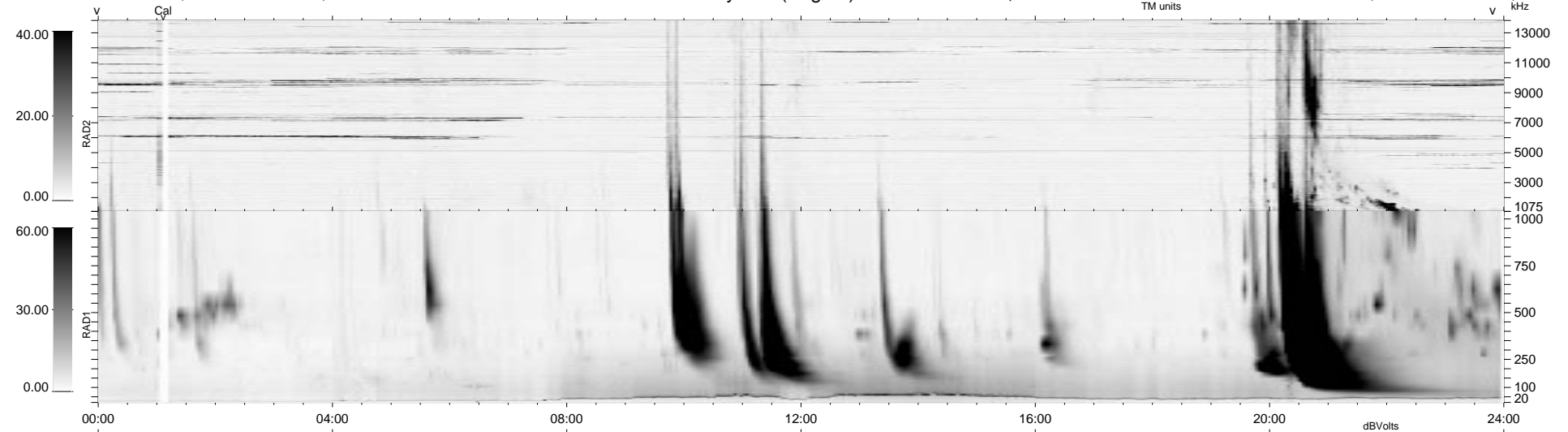
4 bad + 935 good MF/939MF projected (99%) - 0 missing MFs
 Avg interval = 180 secs
 Re = 242.80 (48.10, -237.36, 17.31 GSE)

1.7d VMS-SunOS

LZ version = v02

WIND/WAVES Summary Plot (Page 1) for 28-DEC-2001, DOY = 362

DAILY Wed Feb 25, 2009
 Re = 248.13 (48.70, -242.67, 17.54 GSE)



RAD2
 Antenna Ey
 Mode LIN(1)
 SUM/SEP SEP
 Toggle OFF
 RAD1
 Antenna Ex
 Mode LIS(2,3)
 SUM/SEP SUM
 Toggle OFF
 TNR
 Antenna ExEy
 Mode A-32
 Sweep ACE