

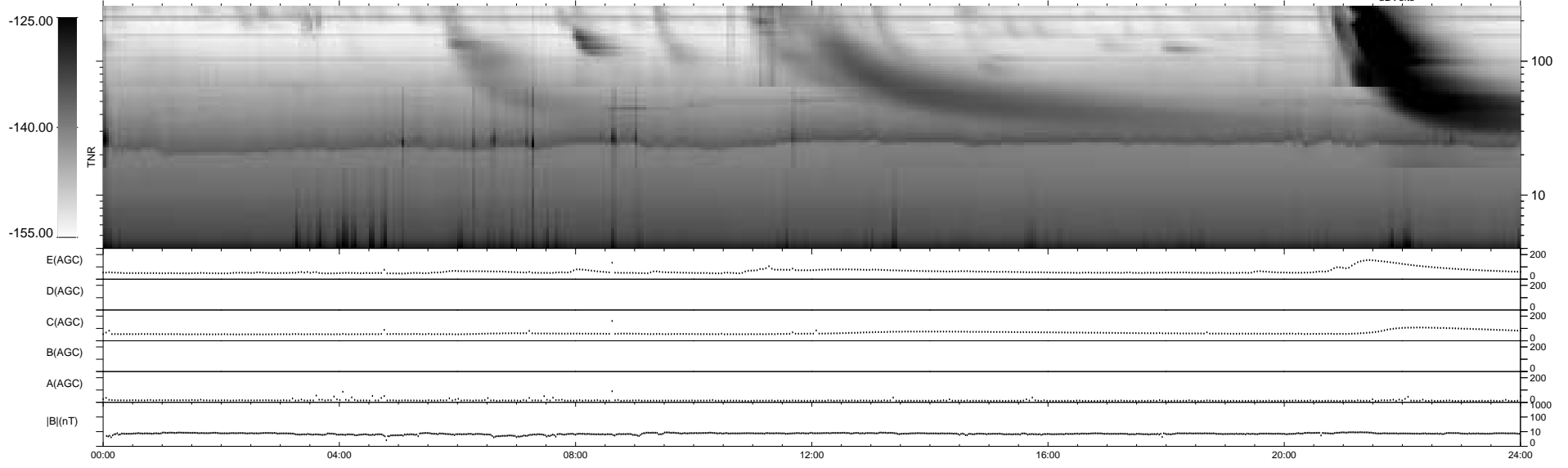
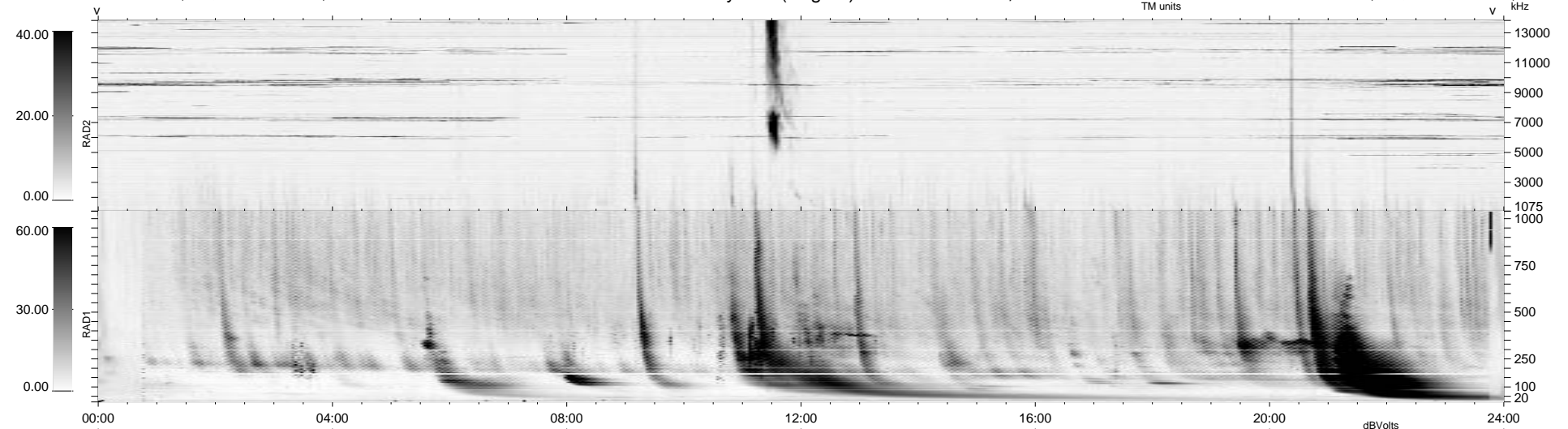
6 bad + 933 good MF/939MF projected (99%) - 0 missing MFs
 Avg interval = 180 secs
 Re = -225.65 (45.30, -220.44, 16.50 GSE)

1.7d VMS-SunOS

LZ version = v01

WIND/WAVES Summary Plot (Page 1) for 25-DEC-2001, DOY = 359

DAILY Wed Feb 25, 2009
 Re = 231.50 (46.40, -226.18, 16.78 GSE)



RAD2
 Antenna Ey
 Mode LIN(1)
 SUM/SEP SEP
 Toggle OFF

RAD1
 Antenna Ex
 Mode LIS(2,8)
 SUM/SEP SUM SEP
 Toggle OFF

TNR
 Antenna ExEy
 Mode A-32
 Sweep ACE

LIS(2,8) SUM