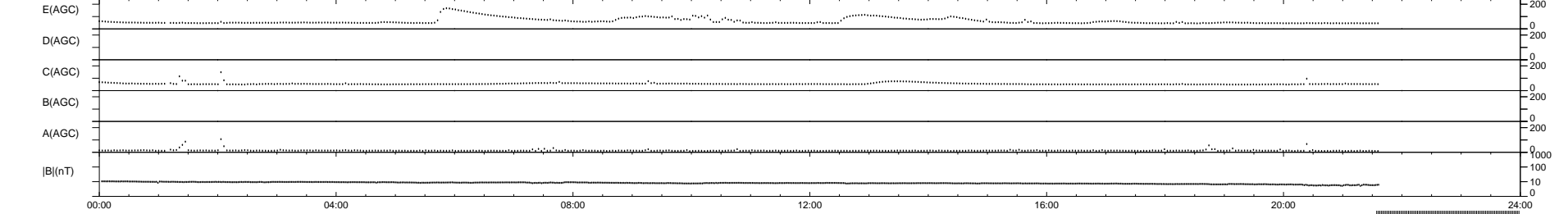
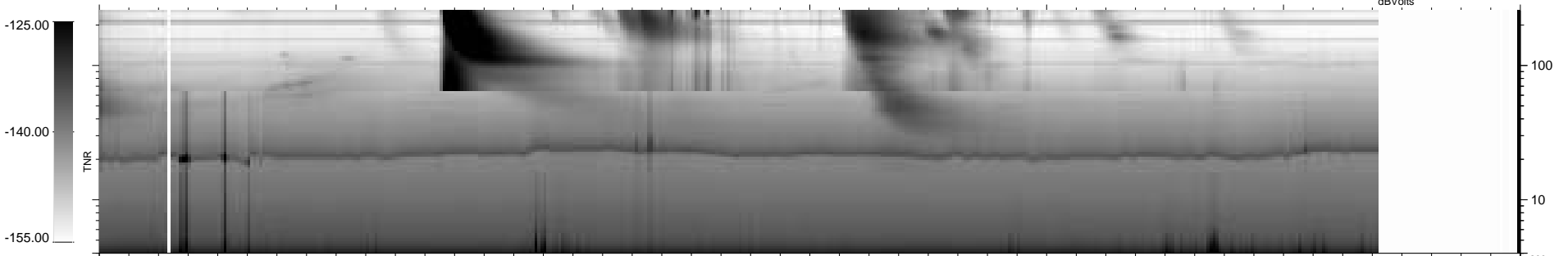
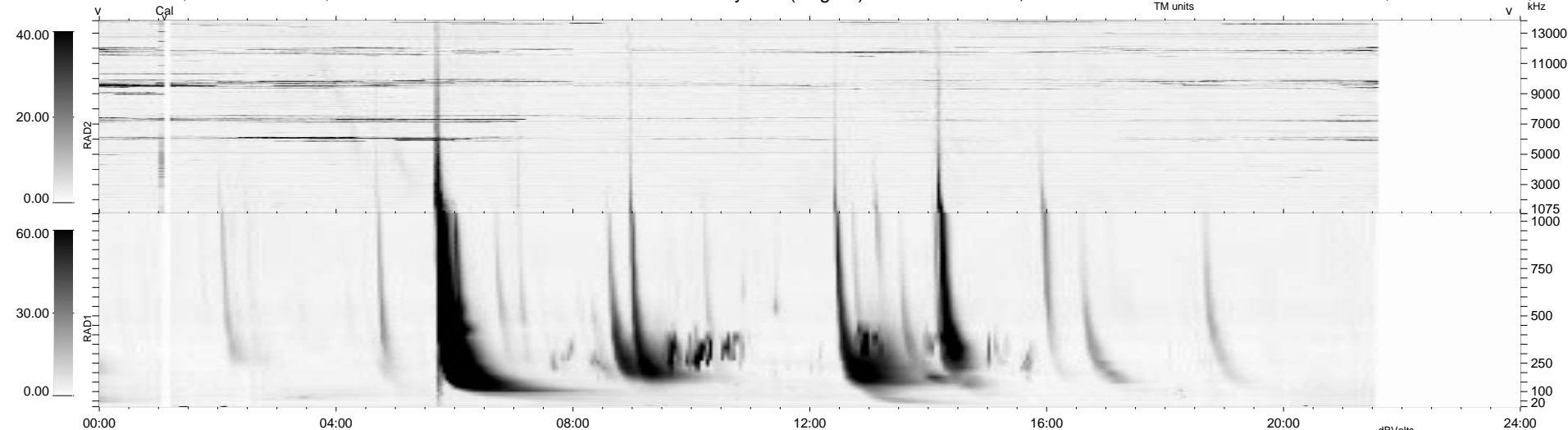


9 bad + 835 good MF/939MF projected (88%) - 95 missing MFs
 Avg interval = 180 secs
 Re = -206.85 (40.72, -202.21, 15.51 GSE)

1.7d VMS-SunOS LZ version = v01
 DAILY Wed Feb 25, 2009
 Re = 213.27 (42.46, -208.40, 15.86 GSE)

WIND/WAVES Summary Plot (Page 1) for 22-DEC-2001, DOY = 356



RAD2
 Antenna Ey
 Mode LIN(1)
 SUM/SEP SEP
 Toggle OFF

RAD1
 Antenna Ex
 Mode LIS(2,3)
 SUM/SEP SUM
 Toggle OFF

TNR
 Antenna ExEy
 Mode A-32
 Sweep ACE