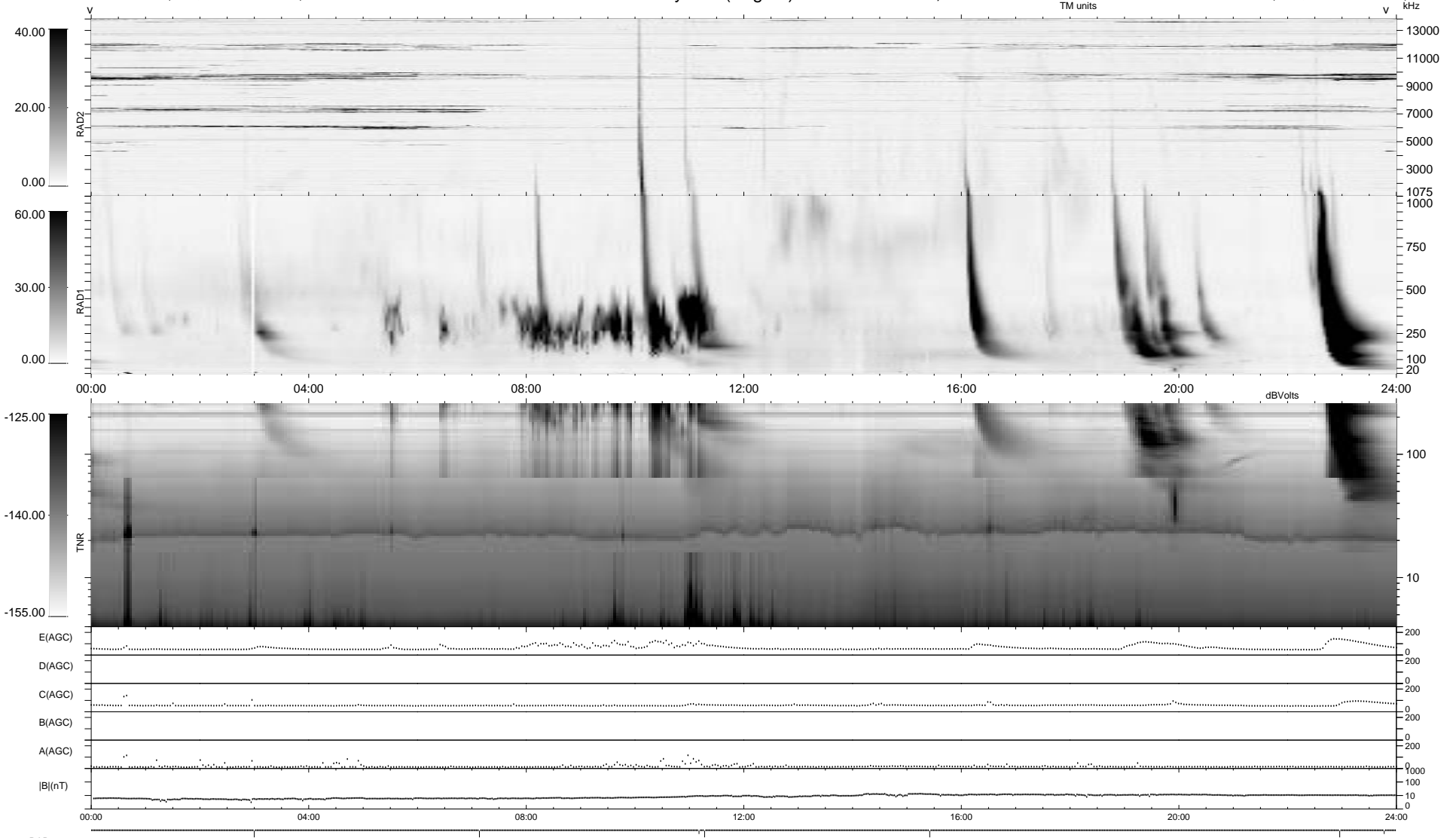


7 bad + 932 good MF/939MF projected (99%) - 0 missing MFs
 Avg interval = 180 secs
 Re = -200.18 (38.73, -195.82, 15.14 GSE)

1.7d VMS-SunOS LZ version = v01
 DAILY Wed Feb 25, 2009
 Re = 206.81 (40.71, -202.17, 15.51 GSE)

WIND/WAVES Summary Plot (Page 1) for 21-DEC-2001, DOY = 355



RAD2 Antenna Ey
 Mode LIN(1)
 SUM/SEP SEP
 Toggle OFF
 RAD1 Antenna Ex
 Mode LIS(2,3)
 SUM/SEP SUM
 Toggle OFF
 TNR Antenna ExEy
 Mode A-32
 Sweep ACE